

Subscribe to our **FREE** e-newsletter!



Stay up to date on all of our latest blogs and articles.

RHUMBLINE

[Click here to subscribe](#) ➤

BOATS

BOAT TESTS

Jeanneau Prestige 42

By [Capt. Patrick Sciacca](#)



Boat Tests

SPECIFICATIONS

Builder: Jeanneau

LOA: 43'10"

Model: Prestige 42

Beam: 13'8"

Model Year: 2007

Draft: 3'5"

Boat Type: Cruiser

Weight: 24,251 lbs. (light displacement)

Standard Power: 2/425-hp Cummins QSB5.9 diesel inboards

Optional Power: none

Fuel Capacity: 306 gal.

Water Capacity: 137 gal.

STANDARD EQUIPMENT

9-kW Onan diesel genset
32,000-Btu Climma A/C



Subscribe to our **FREE e-newsletter!**



Stay up to date on all of our latest blogs and articles.

RHUMBLINE

[Click here to subscribe](#) ➤

BOATS

BOAT TESTS

Jeanneau Prestige 42

By [Capt. Patrick Sciacca](#)



TEST BOAT SPECIFICATIONS

Test Engine: 2/425-hp Cummins QSB5.9 diesel inboards

Transmission/Ratio: ZF/1.96:1

Props: 24x28 4-blade nibral

Steering: Lecomble et Schmitt hydraulic

Price as Tested: \$476,000



Subscribe to our **FREE** e-newsletter!



Stay up to date on all of our latest blogs and articles.

RHUMBLINE

[Click here to subscribe](#) ➤

BOATS

BOAT TESTS

American Tug 41

By [Capt. Bill Pike](#)



Boat Tests

SPECIFICATIONS

Builder: American Tug

Model: 41

Model Year: 2007

Boat Type: Trawler

LOA: 45'6"

Beam: 15'10"

Draft: 4'10"

Weight: 30,000 lbs. (dry)

Standard Power: 1/500-mhp Volvo Penta D9-500 diesel inboard

Optional Power: 1/540-mhp Cummins MerCruiser QSC8.3L diesel inboard

Fuel Capacity: 640 gal.



Subscribe to our **FREE e-newsletter!**

POWER
& MOTORYACHT

Stay up to date on all of our latest blogs and articles.

RHUMBLINE

[Click here to subscribe](#) ➤

BOATS

BOAT TESTS

American Tug 41

By [Capt. Bill Pike](#)



TEST BOAT SPECIFICATIONS

Test Engine: 1/500-mhp Volvo Penta D9-500 diesel inboard

Transmission/Ratio: Twin Disc MG5075A/2.5:1

Props: 32"x27 1/2" 5-blade CNC S-class Nibral

Steering: Teleflex Capilano hydraulic

Price as Tested: \$622,500



Subscribe to our **FREE** e-newsletter!

POWER
& MOTORYACHT

Stay up to date on all of our
latest blogs and articles.

RHUMBLINE

Click here to subscribe ➤

BOATS

BOAT TESTS

Cranchi Atlantique 50

By [Jeffrey Moser](#)



Boat Tests

SPECIFICATIONS

Builder: Cranchi

Model: Atlantique 50

Model Year: 2007

Boat Type: Cruiser

LOA: 51'7"

Beam: 14'3"

Draft: 4'3"

Weight: 39,400 lbs.

Standard Power: 2/575-hp Volvo Penta D9-575
diesel inboards

Optional Power: 2/500-hp Volvo Penta D9-500 diesel
inboards



Subscribe to our **FREE e-newsletter!**

POWER
& MOTORYACHT

Stay up to date on all of our
latest blogs and articles.

RHUMBLINE

[Click here to subscribe](#) ➤

BOATS

BOAT TESTS

Cranchi Atlantique 50

By [Jeffrey Moser](#)



TEST BOAT SPECIFICATIONS

Test Engine: 2/575-hp Volvo Penta D9-575 diesel inboards

Transmission/Ratio: Twin Disc M65075A/1.77:1

Props: 24x36 Tembridge five-blade

Steering: Sea Star hydraulic w/ power-assist

Price as Tested: \$888,848

The Numbers

RPM	MPH (KNOTS)	GPH	MPG (NMPG)	SM RANGE	NM RANGE	DECIBELS	TRIM (DEGREES)
1000	11.4 (9.9)	6.0	1.89 (1.64)	684	595	72	1.0
1250	12.8 (11.1)	12.0	1.06 (0.92)	384	334	77	2.5
1500	16.2 (14.0)	17.0	0.95 (0.83)	344	299	78	3.5
1750	20.7 (18.0)	25.0	0.83 (0.72)	299	260	82	4.0
2000	25.8 (22.4)	31.0	0.83 (0.72)	301	261	85	4.5
2250	31.2 (27.1)	42.0	0.74 (0.64)	268	233	88	3.0
2550	37.0 (32.2)	54.0	0.69 (0.60)	248	216	89	3.0

CONDITIONS: temperature: 83°; humidity: 75%; wind: 15-20 mph; seas: 2', load: 150 gal. fuel, 148 gal. water, 3 persons, 100 lbs. gear. Speeds are two-way averages measured w/ Stalker radar gun. GPH extrapolated from manufacturer-supplied data. Range: 90% of advertised fuel capacity. Decibels measured on A scale. 65 dB is the level of normal conversation.

OPTIONAL EQUIPMENT ON TEST BOAT

Clarion WX2468 six-disc CD changer



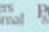
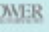
Volvo Penta EVC

6/fenders, custom fender covers

This article originally appeared in the April 2007 issue of *Power & Motoryacht* magazine.

Win a wedding of a lifetime

One lucky couple will win the ultimate island wedding at the breathtaking Abaco Beach Resort in the Bahamas. For official rules of entry, please email weddingofalifetime@aimmedia.com

AIM MARINE GROUP  YACHTS  BoatQuest.com  PassageMaker  SOUNDINGS  Trade Only  AIL  Anglers Journal  POWER



Subscribe to our **FREE** e-newsletter!

POWER
& MOTORYACHT

Stay up to date on all of our latest blogs and articles.

RHUMBLINE

[Click here to subscribe](#) ➤

BOATS

BOAT TESTS

Silverton 33 Convertible

By [Capt. Bill Pike](#)



Boat Tests

SPECIFICATIONS

Builder: Silverton

Model: 33 Convertible

Model Year: 2007

Boat Type: Sportfisherman

LOA: 32'5"

Beam: 12'5"

Draft: 2'7"

Weight: 16,800 lbs.

Standard Power: twin 275-hp Crusader 5.0 MPI gasoline inboards

Optional Power: 2/375-hp Crusader 6.0 HO MPI gasoline inboards; 2/315-hp Yanmar 6LPA-STP diesel inboards

Fuel Capacity: 200 gal.

Water Capacity: 80 gal.

STANDARD EQUIPMENT

Bomar deck hatches
welded s/s bowrails



Subscribe to our **FREE e-newsletter!**

POWER
& MOTORYACHT

Stay up to date on all of our
latest blogs and articles.

RHUMBLINE

Click here to subscribe ➤

BOATS

BOAT TESTS

Silverton 33 Convertible

By [Capt. Bill Pike](#)



TEST BOAT SPECIFICATIONS

Test Engine: 2/375-hp Crusader 6.0 HO MPI gasoline inboards

Transmission/Ratio: ZF 63 A-25/2.44:1

Props: 18x23 Federal DJX 3-blade nibral

Steering: Ultraflex mechanical

Price as Tested: \$255,190



Subscribe to our **FREE** e-newsletter!

POWER
& MOTORYACHT

Stay up to date on all of our
latest blogs and articles.

RHUMBLINE

[Click here to subscribe](#) ➤

BOATS

BOAT TESTS

Liberty 45 Flybridge

By [George L. Petrie](#)



Boat Tests

SPECIFICATIONS

Builder: Liberty Yachts

Model: 45 Flybridge

Model Year: 2007

Boat Type: Sportfisherman

LOA: 45'0"

Beam: 15'8"

Draft: 3'6"

Weight: 28,000 lbs.

Standard Power: 2/715-hp Cummins QSM11 715
diesel inboards

Optional Power: 2/705-hp Caterpillar C12 ACERT
diesel inboards

Fuel Capacity: 500 gal.

Water Capacity: 125 gal.



Subscribe to our **FREE e-newsletter!**

POWER
& MOTORYACHT

Stay up to date on all of our
latest blogs and articles.

RHUMBLINE

Click here to subscribe ➤

BOATS

BOAT TESTS

Liberty 45 Flybridge

By [George L. Petrie](#)



TEST BOAT SPECIFICATIONS

Test Engine: 2/900-hp MAN V8-900 CRM diesel inboards

Transmission/Ratio: Twin Disc/1.5:1

Props: 5-blade, Michigan 24x38 Nibral

Steering: Hynautic hydraulic w/ power assist

Price as Tested: \$1,600,000



Subscribe to our **FREE** e-newsletter!



Stay up to date on all of our latest blogs and articles.

RHUMBLINE

[Click here to subscribe](#) ➤

BOATS

BOAT TESTS

Midnight Express 37 Full Cabin

By [Capt. Bill Pike](#)



Boat Tests

SPECIFICATIONS

Builder: Midnight Express

LOA: 37'2"

Model: 37 Full Cabin

Beam: 11'6"

Model Year: 2007

Draft: 1'8"

Boat Type: Cruiser

Weight: 14,000 lbs. (one-third load)

Standard Power: 2/275-hp Mercury Verado outboards

Optional Power: various twin- and triple-outboard packages from Mercury and Yamaha, up to 300 hp each

Fuel Capacity: 365 gal.

Water Capacity: 70 gal.

STANDARD EQUIPMENT

Anchorlift USA windlass

Ritchie compass

six-leg T-top w/ rocket launcher, fluorescent lights, recessed red overhead lights for after-dark chart work (in-house constructed, powder-



Subscribe to our **FREE e-newsletter!**

POWER
& MOTORYACHT

Stay up to date on all of our
latest blogs and articles.

RHUMBLINE

Click here to subscribe ➤

BOATS

BOAT TESTS

Midnight Express 37 Full Cabin

By [Capt. Bill Pike](#)



TEST BOAT SPECIFICATIONS

Test Engine: 3/275-hp Mercury Verado gasoline outboards

Transmission/Ratio: Bravo One/1:85:1

Props: 151/4x22 Bravo One 4-blade s/s

Steering: Mercury Verado DTS electro-hydraulic

Price as Tested: \$359,150

OPTIONAL EQUIPMENT ON TEST BOAT

Rupp Top Gun outriggers

ACR spotlight



Subscribe to our **FREE** e-newsletter!



Stay up to date on all of our latest blogs and articles.

RHUMBLINE

[Click here to subscribe](#) ➤

BOATS

BOAT TESTS

Hatteras 77 Convertible

By [Capt. Patrick Sciacca](#)



Boat Tests

SPECIFICATIONS

Builder: Hatteras

LOA: 76'10"

Model: 77 Convertible

Beam: 22'0"

Model Year: 2007

Draft: 5'3"

Boat Type: Sportfisherman

Weight: 157,500 lbs.

Standard Power: 2/1,800-hp Caterpillar C32 ACERT diesel inboards

Optional Power: 2/1,800-hp 12V 2000 or 2/2,400-hp 16V 2000 MTU diesel inboards

Fuel Capacity: 3,000 gal.

Water Capacity: 380 gal.





Subscribe to our **FREE** e-newsletter!



Stay up to date on all of our latest blogs and articles.

RHUMBL

[Click here to](#)

BOATS

BOAT TESTS

Hatteras 77 Convertible

By [Capt. Patrick Sciacca](#)



TEST BOAT SPECIFICATIONS

Test Engine: 2/2,400-hp MTU 16V 2000 diesel inboards

Transmission/Ratio: ZF 3360/ 4:1

Props: 49x83 8-blade nibral Michigan

Steering: Sea Star hydraulic w/ power assist

Price as Tested: price upon request

The Numbers

RPM	MPH (KNOTS)	GPH	MPG (NM/PG)	SW RANGE	NW RANGE	DECIBELS	TRIM (DEGREES)
1000	13.0 (11.4)	28.2	0.46 (0.40)	1,245	1,091	65	1.0
1250	15.4 (13.4)	55.6	0.28 (0.24)	748	650	66	1.5
1500	18.3 (15.9)	95.6	0.19 (0.17)	517	449	67	3.0
1750	24.3 (21.1)	127.0	0.19 (0.17)	516	448	69	4.0
2000	30.0 (26.1)	182.0	0.16 (0.14)	445	387	72	4.0
2250	34.0 (29.6)	223.4	0.15 (0.13)	411	357	77	4.5
2365	37.5 (32.6)	240.0	0.16 (0.14)	422	367	79	4.0

OPTIONAL EQUIPMENT ON TEST BOAT

Carolina edition w/ teak mezzanine, coaming, and cockpit sole

Eskimo chipped-ice machine

raised-panel cherrywood cabinetry

Alexseal ice blue hull color

granite countertops

pneumatic door for saloon and flying bridge

2/Underwater Lights underwater lights

Sunbrella carpet runner

freshwater foredeck washdown

41-ft. Rupp outriggers w/ hydraulics

Whirlpool dishwasher in galley

Pompanette offset fighting chair

Furuno FCV 1200L sounder

Vetus bow thruster

This article originally appeared in the March 2007 issue of *Power & Motoryacht* magazine.

Subscribe to our **FREE** e-newsletter!

POWER
& MOTOR YACHT

Stay up to date on all of our
latest blogs and articles.

RHUMBLINE

[Click here to subscribe](#) ➤

BOATS

BOAT TESTS

Lazzara LSX Quad 75

By [Capt. Bill Pike](#)



Boat Tests

SPECIFICATIONS

Builder: Lazzara

LOA: 76'9"

Model: LSX Quad 75

Beam: 18'2"

Model Year: 2007

Draft: 3'6"

Boat Type: Cruiser

Weight: 78,000 lbs.

Standard Power: 4/435-bhp Volvo Penta IPS-600 diesel engines

Optional Power: none

Fuel Capacity: 830 gal.

Water Capacity: 200 gal.

STANDARD EQUIPMENT

35,000-lb.-capacity Maxwell windlass
ISIS 500 vessel-monitoring system
Simrad RS-87 VHF and AP26 autopilot
Sea Key telematics
entertainment package (Toshiba LCD TVs, Denon home theater, Sonance I-Port in-wall iPod docking stations, KVH G4 TV antenna)
Krups coffee maker
Frigidare upright refrigerator/freezer
KitchenAid cooktop and oven
Bosch stacked washer and dryer
4/ Headhunter Royal Flush MSDs
Hayward Industrial Products plumbing runs
Trident sanitation hose
23-kW Kohler genset
6-zone 92,000-Btu Cruisair A/C
Mach 5 Headhunter water pump
100-amp IsoBoost isolation transformer
2/40-amp Charles Industries battery chargers
10/Group 31 Lifeline AGM batteries (2 genset, 8 engine)
2/4D Lifeline AGM house batteries
Glendinning Cablemaster

OPTIONAL EQUIPMENT

additional electronics package (including FIIR night-sight device)
Frigidaire dishwasher
450-gpd Sea Recovery watermaker
Nautica RIB w/ jet drive
Brownie's Hookah dive system
Underwater Lighting USA underwater lighting and camera package
Teak Decking Systems exterior teak package

This article originally appeared in the February 2007 issue of *Power & Motoryacht* magazine.



Subscribe to our **FREE** e-newsletter!

POWER
& MOTOR YACHT

Stay up to date on all of our latest blogs and articles.

RHUMBLINE

[Click here to subscribe](#) ➤

BOATS

BOAT TESTS

Lazzara LSX Quad 75

By [Capt. Bill Pike](#)



TEST BOAT SPECIFICATIONS

Test Engine: 4/435-bhp Volvo Penta IPS-600 diesel engines

Transmission/Ratio: Volvo Penta IPS-600/1.82:1

Props: Volvo Penta T4

Steering: Volvo Penta electronic



Subscribe to our **FREE** e-newsletter!



Stay up to date on all of our latest blogs and articles.

RHUMBLINE

[Click here to subscribe](#) ➤

BOATS

BOAT TESTS

Marlow Explorer 82

By [Capt. Bill Pike](#)



Boat Tests

SPECIFICATIONS

Builder: Marlow

LOA: 84'0"

Model: Explorer 82 Cockpit

Beam: 20'4"

Model Year: 2007

Draft: 4'10"

Boat Type: Other...

Weight: 100,000 lbs.

Standard Power: 2/715-mhp Caterpillar C12 diesel inboards

Optional Power: twin-diesel inboard packages from Caterpillar or MTU, up to 1,675 bhp per engine

Fuel Capacity: 3,000 gal.

Water Capacity: 450 gal.



Subscribe to our **FREE e-newsletter!**

POWER
& MOTORYACHT

Stay up to date on all of our
latest blogs and articles.

RHUMBLINE

Click here to subscribe ➤

BOATS

BOAT TESTS

Marlow Explorer 82

By [Capt. Bill Pike](#)



TEST BOAT SPECIFICATIONS

Test Engine: 2/1,500-bhp Caterpillar C30 diesel inboards

Transmission/Ratio: ZF 2050A/2.5:1

Props: 39x47 5-blade nibral New Foil

Steering: Hynautic hydraulic with two-engine power-assist

Price as Tested: \$3,200,000



Subscribe to our **FREE** e-newsletter!



Stay up to date on all of our latest blogs and articles.

RHUMBLINE

[Click here to subscribe](#) ➤

BOATS

BOAT TESTS

Viking Sanlorenzo 88

By [George L. Petrie](#)



Boat Tests

SPECIFICATIONS

Builder: Viking Custom Yachts

LOA: 88'0"

Model: Sanlorenzo 88

Beam: 22'5"

Model Year: 2007

Draft: 5'11"

Boat Type: Megayacht (> 80')

Weight: 199,000 lbs.

Standard Power: 2/1,825-hp Caterpillar C32A diesel inboards

Optional Power: none

Fuel Capacity: 2,750 gal.

Water Capacity: 528 gal.

STANDARD EQUIPMENT

2/32.5-kW Kohler diesel gensets w/ hushboxes
192,000-Btu Cruisair chilled-water A/C



Subscribe to our **FREE e-newsletter!**



Stay up to date on all of our latest blogs and articles.

RHUMBLINE

[Click here to subscribe](#) ➤

BOATS

BOAT TESTS

Viking Sanlorenzo 88

By [George L. Petrie](#)



TEST BOAT SPECIFICATIONS

Test Engine: 2/1,825-hp Caterpillar C32A diesel inboards

Transmission/Ratio: ZF BW3050V/ 2.75:1

Props: 5-blade Rolla

Steering: Teleflex electrohydraulic

Price as Tested: on request

Boat Tests

SPECIFICATIONS

Builder: Riviera

LOA: 38'6"

Model: 3600 Sport Yacht

Beam: 12'7"

Model Year: 2007

Draft: 3'3"

Boat Type: Cruiser

Weight: 19,800 lbs.

Standard Power: 2/330-hp Cummins QSB5.9 diesel inboards

Fuel Capacity: 265 gal.

Water Capacity: 103 gal.

STANDARD EQUIPMENT

cherry interior
Amtico pilothouse sole
Icom IC-M402 VHF
Ritchie Powerdamp compass
SmartCraft analog gauges
Muir AA500C windlass
26" Sony Bravia LCD TV
Clarion AM/FM/DVD/CD player
2/ 30"LX28"W Lewmar sliding hatches
SeaLand VacuFlush MSD
one-burner EuroKera cooktop
Dometic microwave, 2/refrigerator-freezers
16,000-Btu Cruisair A/C
5-kW Onan genset w/ hushbox
hot/cold transom shower
Racor fuel-water separators
Phase Three battery charger
Sea-Fire fire-exting. system
Doga wipers

OPTIONAL EQUIPMENT

Raymarine C80 radar/chartplotter
Glendinning Cablemaster
cockpit awning
leather interior upholstery

This article originally appeared in the February 2007 issue of *Power & Motoryacht* magazine.



BoatQuest.com

PassageMaker

POWER
MOTORYACHT

AL

SHOW
MANAGEMENT

SOUNDINGS Trade Only

YACHTS

Subscribe to our **FREE** e-newsletter!

POWER
& MOTORYACHT

Stay up to date on all of our
latest blogs and articles.

RHUMBLINE

[Click here to subscribe](#) ►

BOATS

BOAT TESTS

Riviera 3600 Sport Yacht

By [Jeffrey Moser](#)





Subscribe to our **FREE e-newsletter!**

POWER
& MOTORYACHT

Stay up to date on all of our
latest blogs and articles.

RHUMBLINE

Click here to subscribe ➤

BOATS

BOAT TESTS

Riviera 3600 Sport Yacht

By [Jeffrey Moser](#)



TEST BOAT SPECIFICATIONS

Test Engine: 2/330-hp Cummins QSB5.9 diesel inboards

Transmission/Ratio: ZF 80A/1.57:1

Props: 21x22 Duncan four-blade nibrals

Steering: Sea Star hydraulic w/ power-assist

Price as Tested: \$410,260



Subscribe to our **FREE e-newsletter!**



Stay up to date on all of our latest blogs and articles.

RHUMBLINE

[Click here to subscribe](#) ➤

BOATS

BOAT TESTS

Outer Reef 73

By [Jeffrey Moser](#)



Boat Tests

SPECIFICATIONS

Builder: Outer Reef

LOA: 72'7"

Model: 73

Beam: 20'6"

Model Year: 2007

Draft: 5'6"

Boat Type: Trawler

Weight: 143,000 lbs.

Standard Power: 2/800-hp Caterpillar C15 diesel inboards

Optional Power: Caterpillars from 1,000 to 1,650 hp each; other engines at owner's request

Fuel Capacity: 3,000 gal.

Water Capacity: 500 gal.



Subscribe to our **FREE e-newsletter!**



Stay up to date on all of our latest blogs and articles.

RHUMBLINE

[Click here to subscribe](#) ➤

BOATS

BOAT TESTS

Outer Reef 73

By [Jeffrey Moser](#)



TEST BOAT SPECIFICATIONS

Test Engine: 2/1,015-mhp Caterpillar C18 diesel inboards

Transmission/Ratio: ZF 550A/1.97:1

Props: 25x37 4-blade nibrals

Steering: Hynautic hydraulic w/ power assist

Price as Tested: not available

OPTIONAL EQUIPMENT ON TEST BOAT

cherry interior

Denon DVD player, AVR-1905 Surround Sound receiver

Infinity speakers w/ subwoofer

Kenwood AM/FM stereo/CD player w/ Bose speakers on flying bridge

32" Sharp LCD TV, 20" in master, 13" in staterooms

Aquos HDMI system

2/15" Simrad DS54 radar/chartplotters

2/B&G h 1000 Tridata displays (in lieu of Furuno NavNet)



Subscribe to our **FREE** e-newsletter!



Stay up to date on all of our latest blogs and articles.

RHUMBLINE

[Click here to subscribe](#) ➤

BOATS

BOAT TESTS

Carver 52 Voyager

By [Capt. Patrick Sciacca](#)



Boat Tests

SPECIFICATIONS

Builder: Carver

LOA: 53'9"

Model: 52 Voyager

Beam: 15'4"

Model Year: 2007

Draft: 4'9"

Boat Type: Cruiser

Weight: 48,500 lbs.

Standard Power: 2/500-hp Volvo Penta D9 diesel inboards

Optional Power: 2/575-hp Volvo Penta D9-575 or 2/675-hp Volvo Penta D12-675 EVC diesel inboards

Fuel Capacity: 800 gal.

Water Capacity: 200 gal.



Subscribe to our **FREE e-newsletter!**



Stay up to date on all of our latest blogs and articles.

RHUMBLINE

Click here to subscribe ➤

BOATS

BOAT TESTS

Carver 52 Voyager

By [Capt. Patrick Sciacca](#)



TEST BOAT SPECIFICATIONS

Test Engine: 2/575-hp Volvo Penta D9-575 diesel inbounds

Transmission/Ratio: Twin Disc 5705-A/ 2.53:1

Props: 29x32 4-blade nibrals

Steering: Teleflex Sea Star hydraulic

Price as Tested: \$1,181,075



Subscribe to our **FREE** e-newsletter!

POWER
& MOTOR YACHT

Stay up to date on all of our latest blogs and articles.

RHUMBLINE

[Click here to subscribe](#) ➤

BOATS

BOAT TESTS

Alden Yachts 53

By Capt. Bill Pike



Boat Tests

SPECIFICATIONS

Builder: Alden

LOA: 56'0"

Model: 53

Beam: 15'0"

Model Year: 2007



Subscribe to our **FREE** e-newsletter!

POWER
& MOTORYACHT

Stay up to date on all of our
latest blogs and articles.

RHUMBLINE

[Click here to subscribe](#) ➤

BOATS

BOAT TESTS

Alden Yachts 53

By Capt. Bill Pike



TEST BOAT SPECIFICATIONS

This article originally appeared in the January 2007 issue of *Power & Motoryacht* magazine.



Subscribe to our **FREE e-newsletter!**

POWER
& MOTORYACHT

Stay up to date on all of our
latest blogs and articles.

RHUMBLINE

Click here to subscribe ➤

BOATS

BOAT TESTS

Camano 41

By [Capt. Bill Pike](#)



TEST BOAT SPECIFICATIONS

Test Engine: 1/465-hp Yanmar 6CXM-GTE diesel inboard

Transmission/Ratio: ZF 301A/2:1

Props: 26x21 1/2 4-blade manganese bronze

Steering: Teleflex Sea-Star hydraulic

Price as Tested: \$529,113



Subscribe to our **FREE** e-newsletter!



Stay up to date on all of our latest blogs and articles.

RHUMBLINE

[Click here to subscribe](#) ➤

BOATS

BOAT TESTS

Camano 41

By [Capt. Bill Pike](#)



Boat Tests

SPECIFICATIONS

Builder: Camano

LOA: 41'0"

Model: 41

Beam: 14'0"

Model Year: 2007

Draft: 3'9"

Boat Type: Trawler

Weight: 28,000 lbs.

Standard Power: 1/440-hp Yanmar 6LY3-STP diesel inboard

Optional Power: 1/480-hp Yanmar 6LY3-ETP diesel inboard

Fuel Capacity: 400 gal.

Water Capacity: 181 gal.



Subscribe to our **FREE e-newsletter!**



Stay up to date on all of our latest blogs and articles.

RHUMBLINE

[Click here to subscribe](#) ➤

BOATS

BOAT TESTS

Sparkman & Stephens 65

By [Capt. Patrick Sciacca](#)



Boat Tests

SPECIFICATIONS

Builder: Sparkman

LOA: 64'8"

Model:

Beam: 18'3"

Model Year: 2007

Draft: 5'0"

Boat Type: Cruiser

Weight: 86,000 lbs.

Optional Power: owner's choice

Fuel Capacity: 2,000 gal.



Subscribe to our **FREE e-newsletter!**



Stay up to date on all of our latest blogs and articles.

RHUMBLINE

[Click here to subscribe](#) ➤

BOATS

BOAT TESTS

Sparkman & Stephens 65

By [Capt. Patrick Sciacca](#)



TEST BOAT SPECIFICATIONS

Test Engine: 2/1,550-hp Caterpillar C30 diesel inboards

Transmission/Ratio: ZF/2.46:1

Props: 41x48 ZF 5-blade

Steering: Hynautic hydraulic w/ power assist

Price as Tested: price on request



Subscribe to our **FREE** e-newsletter!



Stay up to date on all of our latest blogs and articles.

RHUMBLINE

[Click here to subscribe](#) ➤

BOATS

BOAT TESTS

Viking Sport Cruisers V53

By [Capt. Patrick Sciacca](#)



Boat Tests

SPECIFICATIONS

Builder: Viking Sport Cruisers

LOA: 52'11"

Model:

Beam: 14'11"

Model Year: 2006

Draft: 4'1"

Boat Type: Cruiser

Weight: 40,880 lbs.

Standard Power: 2/715-hp Volvo Penta D12-715 diesel inboards

Optional Power: 2/775-hp Volvo Penta D12-800 or 2/715-hp Caterpillar C12 diesel inboards

Fuel Capacity: 580 gal.

Water Capacity: 115 gal.



Subscribe to our **FREE e-newsletter!**



Stay up to date on all of our latest blogs and articles.

RHUMBLINE

Click here to subscribe ➤

BOATS

BOAT TESTS

Viking Sport Cruisers V53

By [Capt. Patrick Sciacca](#)



TEST BOAT SPECIFICATIONS

Test Engine: 2/775-hp Volvo Penta D12-800 diesel inboards

Transmission/Ratio: ZF/1.733:1

Props: 28x37.9

Steering: Teleflex Sea Star w/ power assist

Price as Tested: \$1,449,465



Subscribe to our **FREE** e-newsletter!



Stay up to date on all of our latest blogs and articles.

RHUMBLINE

[Click here to subscribe](#) ➤

BOATS

BOAT TESTS

Atlantis 50

By [Alan Harper](#)



Boat Tests

SPECIFICATIONS

Builder: Atlantis

LOA: 50'5"

Model: 50

Beam: 14'9"

Model Year: 2007

Draft: 4'5"

Boat Type: Cruiser

Weight: 48,280 lbs.

Standard Power: 2/800-hp Volvo Penta D12-800 diesel inboards

Fuel Capacity: 502 gal.

Water Capacity: 132 gal.

STANDARD EQUIPMENT

70-lb. Bruce anchor with 130-ft. chain
1.5-kW bow windlass
cockpit refrigerator
8-hp bow thruster



Subscribe to our **FREE e-newsletter!**



Stay up to date on all of our latest blogs and articles.

RHUMBLINE

Click here to subscribe ➤

BOATS

BOAT TESTS

Atlantis 50

By [Alan Harper](#)



TEST BOAT SPECIFICATIONS

Test Engine: 2/715-hp Volvo Penta D12-715 diesel inboards

Transmission/Ratio: ZF325IV/2.04:1

Props: 29.5 x 44.5 four-blade Nibral

Steering: BCS hydraulic, power-assisted

Price as Tested: \$1,265,580 (with D12-800 Volvo Penta diesel inboards)



Subscribe to our **FREE** e-newsletter!

POWER
& MOTORYACHT

Stay up to date on all of our latest blogs and articles.

RHUMBLINE

[Click here to subscribe](#) ➤

BOATS

BOAT TESTS

Ocean 54 Super Sport

By [Capt. Patrick Sciacca](#)



Boat Tests

SPECIFICATIONS

Builder: Ocean

Model: 54 Super Sport

Model Year: 2006

Boat Type: Sportfisherman

LOA: 54'6"

Beam: 16'10"

Draft: 4'0"

Weight: 61,000 lbs.

Standard Power: 2/1,360-hp MAN V12 1360 CRM diesel inboards w/ trolling valves

Optional Power: 2/1,100-hp MAN V10 1100 CRM diesel inboards; 2/1,015-hp Caterpillar C18 diesel inboards

Fuel Capacity: 1,000 gal.



Subscribe to our **FREE** e-newsletter!

POWER
& MOTORYACHT

Stay up to date on all of our
latest blogs and articles.

RHUMBLINE

Click here to subscribe ➤

BOATS

BOAT TESTS

Ocean 54 Super Sport

By [Capt. Patrick Sciacca](#)



TEST BOAT SPECIFICATIONS

Test Engine: 2/1,360-hp MAN V-12 CRM diesel inboards

Transmission/Ratio: ZF/1.76:1

Props: 31x39 five-blade Hall & Stavert Hy-Torq

Steering: Hynautic hydraulic w/ power-assist

Price as Tested: \$1,760,395



Subscribe to our **FREE** e-newsletter!

POWER
& MOTORYACHT

Stay up to date on all of our latest blogs and articles.

RHUMBLINE

Click here to subscribe ➤

BOATS

BOAT TESTS

CNM Continental 80

By [Alan Harper](#)



Boat Tests

SPECIFICATIONS

Builder: CNM

LOA: 84'0"

Model:

Beam: 20'0"

Model Year: 2006

Draft: 3'9"

Boat Type: Megayacht (> 80')

Weight: 118,720 lbs.

Standard Power: 2/1,825-hp Caterpillar C32DA diesel inboards and Arneson 15L surface drives

Optional Power: 2/2,000-hp MTU 16V 2000 M91 or 2/2,400-hp MTU 16V 2000 M93 diesel inboards w/ Arneson surface drives, jet drives, or straight inboards

Fuel Capacity: 1,585 gal.



Subscribe to our **FREE e-newsletter!**



Stay up to date on all of our latest blogs and articles.

RHUMBLINE

[Click here to subscribe](#) ➤

BOATS

BOAT TESTS

CNM Continental 80

By [Alan Harper](#)



TEST BOAT SPECIFICATIONS

Test Engine: 2/1,825-hp Caterpillar C32DA diesel inboards

Props: Rolla 5-blade

Steering: Arneson hydraulic

Price as Tested: \$4,800,000



Subscribe to our **FREE** e-newsletter!



Stay up to date on all of our latest blogs and articles.

RHUMBLINE

[Click here to subscribe](#) ➤

BOATS

BOAT TESTS

Sabre 34 Hard Top Express

By [Jeffrey Moser](#)



Boat Tests

SPECIFICATIONS

Builder: Sabre Yachts

LOA: 34'6"

Model: 34 Hard Top Express

Beam: 13'3"

Model Year: 2006

Draft: 3'0"

Boat Type: Down East

Weight: 15,850 lbs.

Standard Power: 2/310-hp Yanmar 6LPA-STP diesel inboards

Optional Power: 2/380-hp Yanmar 6YLA-STP, 2/310-hp Volvo Penta D6-310, or 2/370-hp Volvo Penta D6-370 diesel inboards

Fuel Capacity: 250 gal.

Water Capacity: 60 gal.



Subscribe to our **FREE e-newsletter!**



Stay up to date on all of our latest blogs and articles.

RHUMBLINE

Click here to subscribe ➤

BOATS

BOAT TESTS

Sabre 34 Hard Top Express

By [Jeffrey Moser](#)



TEST BOAT SPECIFICATIONS

Test Engine: 2/370-hp Volvo Penta D6-370 diesel inboards

Transmission/Ratio: ZF 80A/1.962:1

Props: 21x23 1/2 ZF four-blade nibrals

Steering: Sea Star hydraulic w/ power-assist

Price as Tested: \$425,000



Subscribe to our **FREE** e-newsletter!

POWER
& MOTORYACHT

Stay up to date on all of our latest blogs and articles.

RHUMBLINE

[Click here to subscribe](#) ➤

BOATS

BOAT TESTS

Buzzards Bay 33

By [Elizabeth Ginns Britten](#)



Boat Tests

SPECIFICATIONS

Builder: Multihull

LOA: 33'0"

Model:

Beam: 12'4"

Model Year: 2006

Draft: 2'0"

Boat Type: Catamaran

Weight: 11,000 lbs.

Standard Power: 2/225-hp Mercury Verado four-stroke outboards

Optional Power: 2/130-, 2/167-, or 2/190-hp Volvo Penta diesel inboards

Fuel Capacity: 220 gal.

Water Capacity: 50 gal.



Subscribe to our **FREE e-newsletter!**



Stay up to date on all of our latest blogs and articles.

RHUMBLINE

[Click here to subscribe](#) ➤

BOATS

BOAT TESTS

Buzzards Bay 33

By [Elizabeth Ginns Britten](#)



TEST BOAT SPECIFICATIONS

Test Engine: 2/225-hp Mercury Verado four-stroke outboards

Transmission/Ratio: Mercury/1.85:1

Props: 15x15 3-blade stainless steel

Steering: Teleflex hydraulic

Price as Tested: \$304,000



Subscribe to our **FREE** e-newsletter!



Stay up to date on all of our latest blogs and articles.

RHUMBLINE

[Click here to subscribe](#) ➤

BOATS

BOAT TESTS

Oceanus Voyager 45

By [Capt. Patrick Sciacca](#)



Boat Tests

SPECIFICATIONS

Builder: Oceanus

LOA: 45'9"

Model:

Beam: 12'9"

Model Year: 2006

Draft: 3'0"

Boat Type: Cruiser

Weight: 20,947 lbs.

Standard Power: 2/260-hp Volvo Penta D4-260/DP diesel stern drives

Optional Power: 2/280-hp, 2/310-hp, or 2/350-hp Volvo Penta D6 diesel stern drives

Fuel Capacity: 265 gal.

Water Capacity: 100 gal.



Subscribe to our **FREE e-newsletter!**



Stay up to date on all of our latest blogs and articles.

RHUMBLINE

Click here to subscribe ➤

BOATS

BOAT TESTS

Oceanus Voyager 45

By [Capt. Patrick Sciacca](#)



TEST BOAT SPECIFICATIONS

Test Engine: 2/350-hp Volvo Penta D6-350 diesel stern drives

Transmission/Ratio: Volvo Penta/1.76:1

Props: Volvo Penta G5 nibral

Steering: Volvo Penta w/ optional power-assist

Price as Tested: \$449,000



- [THE BOAT](#)
- [THE TEST](#)
- [THE PHOTOS](#)

Rinker 350 Express Cruiser

By [Capt. Bill Pike](#)



Boat Tests

SPECIFICATIONS

Builder: Rinker

Model: 350 Express Cruiser

Model Year: 2006

Boat Type: Cruiser

LOA: 37'11"

Beam: 12'0"

Draft: 3'0"

Weight: 15,550 lbs.

Optional Power: twin gasoline or diesel stern-drives from MerCruiser or Volvo Penta up to 320-hp per engine

Fuel Capacity: 235 gal.

Water Capacity: 51 gal.



Rinker 350 Express Cruiser

By [Capt. Bill Pike](#)



TEST BOAT SPECIFICATIONS

Transmission/Ratio: Bravo Three/2.2:1

Props: 14x15x 22 3-blade stainless-steel propset

Steering: MerCruiser engine-driven power assist

Price as Tested: \$240,385

OPTIONAL EQUIPMENT ON TEST BOAT

Broksonic LCD TV in aft cabin
Raymarine C80 GPS/radar chartplotter
ITT Jabsco macerator and Y-valve
teak-and-holly flooring
two-tone gelcoat

This article originally appeared in the November 2006 issue of *Power & Motoryacht* magazine.





Subscribe to our **FREE** e-newsletter!



Stay up to date on all of our latest blogs and articles.

RHUMBLINE

[Click here to subscribe](#) ➤

BOATS

BOAT TESTS

Tiara 3900 Sovran

By [Capt. Bill Pike](#)



Boat Tests

SPECIFICATIONS

Builder: Tiara

LOA: 41'9"

Model: 3900 Sovran

Beam: 13'11"

Model Year: 2006

Draft: 3'5"

Boat Type: Other...

Weight: 23,000 lbs.

Standard Power: 2/310-hp Volvo Penta IPS-400 diesel inboards

Optional Power: 2/370-hp Volvo Penta IPS-500 diesel inboards

Fuel Capacity: 300 gal.



Subscribe to our **FREE** e-newsletter!



Stay up to date on all of our latest blogs and articles.

RHUMBLINE

[Click here to subscribe](#) ➤

BOATS

BOAT TESTS

Tiara 3900 Sovran

By [Capt. Bill Pike](#)



TEST BOAT SPECIFICATIONS

Test Engine: 2/370-hp Volvo Penta IPS-500 diesel inboard transmissions

Transmission/Ratio: IPS 500/1.94:1

Props: Volvo Penta T5

Steering: Volvo Penta electronic

Price as Tested: \$568,930

OPTIONAL EQUIPMENT ON TEST BOAT

foredeck sunpad

32,000-Btu Marine Air cockpit A/C

Raymarine electronics package (2/E-120 multifunction color displays, Ray 240 VHF, DSM Digital Sounder Module, ST8001 autopilot, and 4-kW open-array radar antenna) cockpit upholstery package



Subscribe to our **FREE** e-newsletter!



Stay up to date on all of our latest blogs and articles.

RHUMBLINE

[Click here to subscribe](#) ►

BOATS

BOAT TESTS

Mikelson 59/63 LRSF

By [Capt. Richard Thiel](#)



Boat Tests

SPECIFICATIONS

Builder: Mikelson

LOA: 64'7"

Model: 59/63 LRSF

Beam: 18'0"

Model Year: 2006

Draft: 5'6"

Boat Type: Other...

Weight: 85,000 lbs. (half load)

Standard Power: 2/660-hp Cummins QSM-11 diesel inboards

Optional Power: none

Fuel Capacity: 2,200 gal. (w/ opt. 190-gal. cockpit tank)

Water Capacity: 310 gal.

STANDARD EQUIPMENT

16-kW NorPro genset
duplex Racor fuel-water separators



Subscribe to our **FREE e-newsletter!**

POWER
& MOTORYACHT

Stay up to date on all of our latest blogs and articles.

RHUMBLINE

[Click here to subscribe](#) ➤

BOATS

BOAT TESTS

Mikelson 59/63 LRSF

By [Capt. Richard Thiel](#)



TEST BOAT SPECIFICATIONS

Test Engine: 2/660-hp Cummins QSM-11 diesel inboards

Transmission/Ratio: Twin Disc/2.48:1

Props: 34x36 5-blade nibrals

Steering: Hynautic hydraulic



Subscribe to our **FREE e-newsletter!**



Stay up to date on all of our latest blogs and articles.

RHUMBLINE

[Click here to subscribe ►](#)

BOATS

BOAT TESTS

Doral Mediterra

By [Jeffrey Moser](#)



Boat Tests

SPECIFICATIONS

Builder: Doral

LOA: 40'0"

Model: Mediterra

Beam: 13'3"

Model Year: 2006

Draft: 3'8"

Boat Type: Cruiser

Weight: 25,000 lbs.

Standard Power: 2/370-hp Volvo Penta IPS-500 diesel inboards

Optional Power: 2/370-hp Volvo Penta D6-370 diesel inboards, 2/420-hp Volvo Penta 8.1 GXI gasoline inboards, and 2/425-hp MerCruiser MAG HO Bravo Three stern drives

Fuel Capacity: 294 gal.

Water Capacity: 80 gal.



Subscribe to our **FREE e-newsletter!**



Stay up to date on all of our latest blogs and articles.

RHUMBLINE

[Click here to subscribe](#) ➤

BOATS

BOAT TESTS

Doral Mediterra

By [Jeffrey Moser](#)



TEST BOAT SPECIFICATIONS

Test Engine: 2/370-hp Volvo Penta IPS-500 diesel inboards

Transmission/Ratio: Volvo Penta/1.94:1

Props: Volvo Penta T5

Steering: Volvo Penta hydraulic w/ power assist



Subscribe to our **FREE** e-newsletter!

POWER
& MOTOR YACHT

Stay up to date on all of our
latest blogs and articles.

RHUMBLINE

[Click here to subscribe](#) ➤

BOATS

BOAT TESTS

Cruisers 390 Sports Coupe

By [Capt. Richard Thiel](#)



Boat Tests

SPECIFICATIONS

Builder: Cruisers Yachts

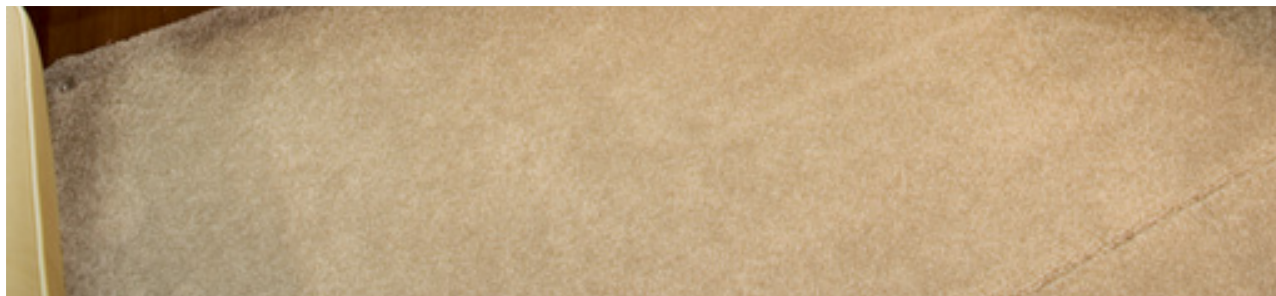
Model: 390 Sports Coupe

Model Year: 2006

LOA: 45'2" (incl. platform)

Beam: 14'6"

Draft: 3'10"



Boat Tests

SPECIFICATIONS

Builder: Cruisers Yachts

Model: 390 Sports Coupe

Model Year: 2006

Boat Type: Cruiser

LOA: 45'2" (incl. platform)

Beam: 14'6"

Draft: 3'10"

Weight: 29,500 lbs.

Standard Power: 2/375-hp Volvo Penta 8.1 Gi
gasoline V-drive inboards

Optional Power: 2/420-hp Volvo Penta 8.1 GXi
gasoline V-drives; 2/370-hp Volvo Penta D6 diesel V-
or IPS drives; 2/435-hp Volvo Penta D6 V- or IPS
drives; 2/440-hp Yanmar 6LY3A-STP V-drives; 2/480-
hp Yanmar 6LY3-ETP diesel V-drives

Fuel Capacity: 375 gal.

Water Capacity: 100 gal.

STANDARD EQUIPMENT

reverse-cycle A/C
automatic fire-ext. system
2/ProSine battery chargers
cabin carpet w/ covers
CO detector
cockpit shower and wet bar
rudder-position indicator

İzlemek

Paylaşır

Subscribe to our **FREE e-newsletter!**



Stay up to date on all of our latest blogs and articles.

RHUMBLINE

[Click here to subscribe](#) ➤

BOATS

BOAT TESTS

Cruisers 390 Sports Coupe

By [Capt. Richard Thiel](#)



TEST BOAT SPECIFICATIONS

Test Engine: 2/480-hp Yanmar 6LY3-ETP diesel V-drives

Transmission/Ratio: ZF 85IV/2.0:1

Props: 22x25 4-blade nibrals

Steering: Hynautic hydraulic w/ power assist

Price as Tested: \$503,689



Subscribe to our **FREE** e-newsletter!

POWER
& MOTOR YACHT

Stay up to date on all of our latest blogs and articles.

RHUMBLINE

[Click here to subscribe](#) ➤

BOATS

BOAT TESTS

CW Hood 50

By [Capt. Patrick Sciacca](#)



Boat Tests

SPECIFICATIONS

Builder: CW Hood

LOA: 50'9"

Model: 50

Beam: 17'1"

Model Year: 2006

Draft: 3'5"

Boat Type: Cruiser

Weight: 44,900 lbs.

Standard Power: 2/720-hp Yanmar 6SY-STP diesel
V-drives

Optional Power: 2/730-hp MAN D2876 LE 405 diesel
V-drives

Fuel Capacity: 700 gal.

Water Capacity: 300 gal.

STANDARD EQUIPMENT

integral swim platform w/ molded stairway
6/flush-mounted portlights
Epifanes gloss varnish on exterior joiner work (10 coats minimum)
molded hardtop
cockpit wet bar
Teleflex double-shifter engine controls
11-hp Side-Power bow thruster
Racor fuel-water separators
6/8D gel- cell batteries
15-kW Mastervolt genset
2/50-amp shore-power inlets
60,000-Btu Marine Air A/C (5 zones)
Marelon seaocks
Pioneer AM/FM stereo/CD/DVD player
U.S.C.G. safety equipment
teak eyebrows on cabin sides
16/stainless steel cleats
custom-engraved Stazo stainless steel wheel
600,000-candlepower Jabsco searchlight
2/Ultraleather air- suspension helm chairs
U-shape settee
queen berth in master
4/hi-lo bunks in guest staterooms
recessed overhead and bulkhead Cantalupi lighting
4/Dorade vents w/ teak drainage boxes
Corian countertops
GE appliances

OPTIONAL EQUIPMENT

Teak-covered aft steps
Herreshoff- style paint and varnished paneled interior
Sampo LCD TVs in saloon and master
Raymarine electronics w/ 2/E120 displays, ST8001 autopilot, and 215 VHF

This article originally appeared in the October 2006 issue of *Power & Motoryacht* magazine.



Subscribe to our **FREE** e-newsletter!



Stay up to date on all of our latest blogs and articles.

RHUMBLINE

[Click here to subscribe](#) ➤

BOATS

BOAT TESTS

CW Hood 50

By [Capt. Patrick Sciacca](#)



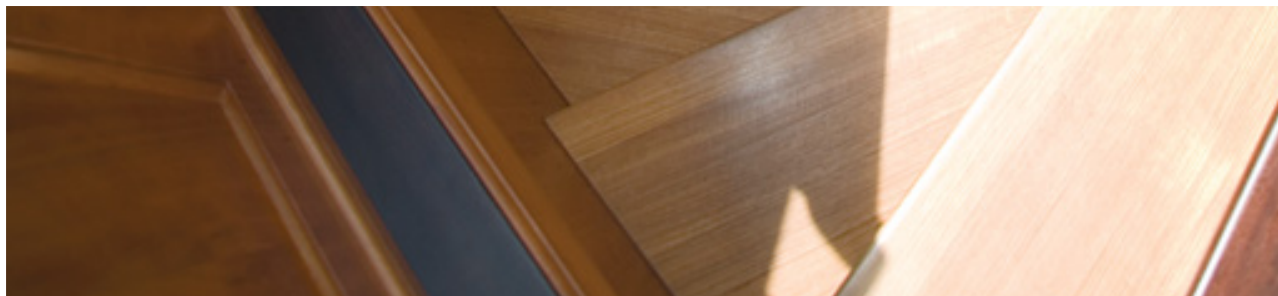
TEST BOAT SPECIFICATIONS

Test Engine: 2/730-hp MAN D2786 LE 405 diesel V-drives

Transmission/Ratio: ZF/2.04:1

Props: 32x34 four-blade Teignbridge

Steering: Hynautic hydraulic w/ power-assist



Boat Tests

SPECIFICATIONS

Builder: CW Hood

Model: 50

Model Year: 2006

Boat Type: Cruiser

LOA: 50'9"

Beam: 17'1"

Draft: 3'5"

Weight: 44,900 lbs.

Standard Power: 2/720-hp Yanmar 6SY-STP diesel
V-drives

Optional Power: 2/730-hp MAN D2876 LE 405 diesel
V-drives

Fuel Capacity: 700 gal.

Water Capacity: 300 gal.

STANDARD EQUIPMENT

integral swim platform w/ molded stairway

6/flush-mounted portlights

Epifanes gloss varnish on exterior joiner work (10 coats minimum)

molded hardtop

cockpit wet bar

Teleflex double-shifter engine controls

11-hp Side-Power bow thruster

Racor fuel-water separators

6/8D gel- cell batteries

15-kW Mastervolt genset

Subscribe to our **FREE e-newsletter!**

POWER
& MOTORYACHT

Stay up to date on all of our latest blogs and articles.

RHUMBLINE

[Click here to subscribe ►](#)

BOATS

BOAT TESTS

Hustler 49 EDS

By [Jeffrey Moser](#)



Boat Tests

SPECIFICATIONS

Builder: Hustler

Model: 49 EDS

Model Year: 2006

Boat Type: Cruiser

LOA: 49'0"

Beam: 10'0"

Draft: 3'0"

Weight: 23,000 lbs.

Standard Power: 3/440-hp Yanmar 6LY2A-STP diesel inboards

Optional Power: 4/440-hp Yanmar 6LY2A-STP diesel inboards, other engine-drive packages available



Subscribe to our **FREE e-newsletter!**

POWER
& MOTORYACHT

Stay up to date on all of our
latest blogs and articles.

RHUMBLINE

Click here to subscribe ➤

BOATS

BOAT TESTS

Hustler 49 EDS

By [Jeffrey Moser](#)



TEST BOAT SPECIFICATIONS

Test Engine: 3/440-hp Yanmar 6LY2A-STP diesel inboards

Transmission/Ratio: ZF 110 GTS 2-speed/1.18/1.52:1

Props: 18x28 five-blade Rolla

Steering: ZF Trimax hydraulic w/ power assist



Subscribe to our **FREE** e-newsletter!



Stay up to date on all of our latest blogs and articles.

RHUMBLINE

[Click here to subscribe](#) ►

BOATS

BOAT TESTS

Sea Ray 60 Sundancer

By [Jeffrey Moser](#)



Boat Tests

SPECIFICATIONS

Builder: Sea Ray

LOA: 61'6"

Model: 60 Sundancer

Beam: 16'9"

Model Year: 2006

Draft: 4'2"

Boat Type: Cruiser

Weight: 55,700 lbs.

Standard Power: 2/1,100-hp MAN V10 1100 CRM diesel V-drives

Optional Power: none

Fuel Capacity: 900 gal.

Water Capacity: 200 gal.

STANDARD EQUIPMENT

cherry interior

Sea Ray Navigator touch-screen chartplotter

Raymarine E-Series 4-kW radar/chartplotter, 240 VHF, ST8001 autopilot

Side-Power bow and stern thrusters

Ritchie compass

Stidd helm and companion seats

Bose 3-2-1 Surround Sound system in saloon, speakers in saloon, cockpit, and staterooms



Subscribe to our **FREE e-newsletter!**

POWER
& MOTORYACHT

Stay up to date on all of our
latest blogs and articles.

RHUMBLINE

Click here to subscribe ➤

BOATS

BOAT TESTS

Sea Ray 60 Sundancer

By [Jeffrey Moser](#)



TEST BOAT SPECIFICATIONS

Test Engine: 2/1,100-hp MAN V10 1100 CRM V-drives

Transmission/Ratio: ZF 500I/1.76:1

Props: 30x38 4-blade nibrals

Steering: SeaStar hydraulic w/ power assist

Price as Tested: \$1,850,000



Subscribe to our **FREE** e-newsletter!



Stay up to date on all of our latest blogs and articles.

RHUMBLINE

[Click here to subscribe](#) ►

BOATS

BOAT TESTS

Kadey-Krogen Krogen 44

By [Capt. Bill Pike](#)



Boat Tests

SPECIFICATIONS

Builder: Kadey-Krogen

LOA: 49'0"

Model: Krogen 44

Beam: 15'6"

Model Year: 2006

Draft: 4'6"

Boat Type: Trawler

Weight: 43,140 lbs.

Standard Power: 1/154-hp John Deere PowerTech 6068TFM diesel inboard

Optional Power: none

Fuel Capacity: 850 gal.

Water Capacity: 300 gal.

STANDARD EQUIPMENT

Maxwell windlass
teak side and aft decks w/ GripTex nonskid
Pompanette helm chair
Cantalupi lighting
Corian countertops
desk in guest stateroom/den w/ convertible settee
three-burner Force 10 propane stove w/oven



Subscribe to our **FREE e-newsletter!**



Stay up to date on all of our latest blogs and articles.

RHUMBLINE

[Click here to subscribe](#) ➤

BOATS

BOAT TESTS

Kadey-Krogen Krogen 44

By [Capt. Bill Pike](#)



TEST BOAT SPECIFICATIONS

Test Engine: 1/158-hp John Deere PowerTech 6068TFM diesel inboard

Transmission/Ratio: Twin Disc MG5061SC/3.00:1

Props: 28x24.5 4-blade bronze

Steering: Hynautic hydraulic

Price as Tested: \$900,000



Subscribe to our **FREE e-newsletter!**



Stay up to date on all of our latest blogs and articles.

RHUMBLINE

[Click here to subscribe ►](#)

BOATS

BOAT TESTS

Atlantis 39

By [Alan Harper](#)



Boat Tests

SPECIFICATIONS

Builder: Atlantis

LOA: 39'4"

Model: 39

Beam: 12'9"

Model Year: 2006

Draft: 3'8"

Boat Type: Cruiser

Weight: 19,936 lbs.

Standard Power: 2/260-hp Volvo Penta D4-260/DP diesel stern drives

Optional Power: 2/310-hp Volvo Penta D6-310/DP diesel stern drives

Fuel Capacity: 206 gal.

Water Capacity: 66 gal.

STANDARD EQUIPMENT

44-lb. Bruce anchor with 130-ft. chain

1-kW windlass

1.8.-cu.-ft. cockpit refrigerator



Subscribe to our **FREE e-newsletter!**

POWER
& MOTORYACHT

Stay up to date on all of our
latest blogs and articles.

RHUMBLINE

Click here to subscribe ➤

BOATS

BOAT TESTS

Atlantis 39

By [Alan Harper](#)



TEST BOAT SPECIFICATIONS

Test Engine: 2/310-hp Volvo Penta D6-310/DP diesel stern drives

Transmission/Ratio: Volvo Penta/1.85:1

Props: Volvo Penta DPH DuoProp

Steering: Volvo Penta hydraulic w/ power assist



Subscribe to our **FREE** e-newsletter!



Stay up to date on all of our latest blogs and articles.

RHUMBLINE

[Click here to subscribe](#) ➤

BOATS

BOAT TESTS

Cranchi Mediterranee 47 HT

By [Capt. Patrick Sciacca](#)



Boat Tests

SPECIFICATIONS

Builder: Cranchi

LOA: 47'4"

Model: Mediterranee 47 HT

Beam: 13'6"

Model Year: 2006

Draft: 3'5"

Boat Type: Other...

Weight: 32,660 lbs.

Standard Power: 2/575-hp Volvo Penta D9 575 diesel inboards

Optional Power: 2/500-hp Volvo Penta D9 500 diesel inboards

Fuel Capacity: 413 gal.

Water Capacity: 111 gal



Subscribe to our **FREE e-newsletter!**

POWER
& MOTORYACHT

Stay up to date on all of our
latest blogs and articles.

RHUMBLINE

Click here to subscribe ➤

BOATS

BOAT TESTS

Cranchi Mediterranee 47 HT

By [Capt. Patrick Sciacca](#)



TEST BOAT SPECIFICATIONS

Test Engine: 2/575-hp Volvo Penta D9 575 diesel inboards

Transmission/Ratio: ZF 305-1A/1.97:1

Props: 24x38.5 five-blade Teignbridge

Steering: Teleflex SeaStar hydraulic w/ power assist

Price as Tested: \$786,734





Subscribe to our **FREE e-newsletter!**



Stay up to date on all of our latest blogs and articles.

RHUMBLINE

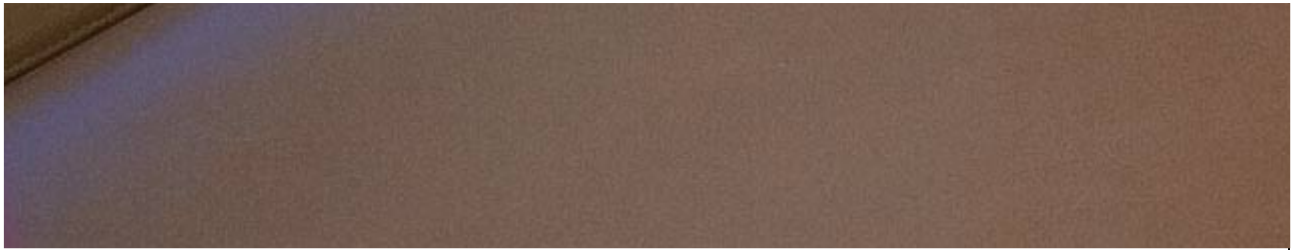
Click here to subscribe ➤

BOATS

BOAT TESTS

Viking 64 Convertible

By [George L. Petrie](#)



Boat Tests

SPECIFICATIONS

Builder: Viking Custom Yachts

LOA: 63'9"

Model: 64 Convertible

Beam: 19'2"

Model Year: 2006

Draft: 5'2"

Boat Type: Other...

Weight: 87,000 lbs.

Standard Power: 2/1,550-hp MAN V12-1550 CRM diesel inboards

Optional Power: 2/1,675-hp Caterpillar C32 or 2/1,825-hp Caterpillar C32 ACERT; 2/1,520-hp MTU 2000 V12 M91, 2/1,830-hp MTU 2000 V12 M93, 2/2,030-hp MTU 2000 V16 M91, or 2/2,400-hp MTU 2000 V16 M93 diesel inboards

Fuel Capacity: 1,930 gal.

Water Capacity: 325 gal.

STANDARD EQUIPMENT

27.5-kW Onan E-QD genset w/hushbox
61,000-Btu Cruisair four-zone A/C
in-deck insulated fishbox
recessed chill boxes in saloon steps
top-loading chill box on bridge deck
Moritz safety monitoring system
Murray Products teak helm and companion seats
42" plasma TV above dinette
Bose Lifestyle 48 entertainment system w/ 42" plasma TV in saloon
Bose 3-2-1 sound system w/20" LCD TV in master
2/Glendinning 50-amp Cablemasters

OPTIONAL EQUIPMENT

21.5-kW Onan genset
1,200-gpd watermaker
teak decking in cockpit and mezzanine
tower w/ hardtop
three-sided bridge enclosure
ice maker in cockpit sole fishbox
bow thruster
custom hull color
Premier Edition interior decor
custom etched glass in master
custom electronic displays, including Northstar 972 plotter, 2/18" Ovee monitors, and 11" Northstar 6000



Subscribe to our **FREE e-newsletter!**



Stay up to date on all of our latest blogs and articles.

RHUMBLINE

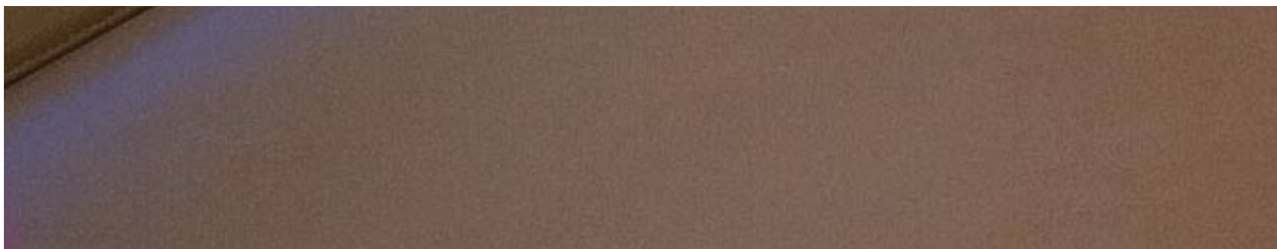
Click here to subscribe ➤

BOATS

BOAT TESTS

Viking 64 Convertible

By [George L. Petrie](#)



TEST BOAT SPECIFICATIONS

Test Engine: 2/1,825-hp Caterpillar C32 ACERT diesel inboards

Transmission/Ratio: ZF/2.25:1

Props: 5-blade nibral Veem; specs not available

Steering: Teleflex Sea-Star hydraulic w/ power assist

Price as Tested: \$3,240,199

OPTIONAL EQUIPMENT ON TEST BOAT

21.5-kW Onan genset

1,200-gpd watermaker

teak decking in cockpit and mezzanine

tower w/ hardtop

three-sided bridge enclosure

ice maker in cockpit sole fishbox

bow thruster

custom hull color

Premier Edition interior decor

custom etched glass in master

custom electronic displays, including Northstar 972 plotter, 2/18" Ovei monitors, and 11" Northstar 6000

This article originally appeared in the September 2006 issue of *Power & Motoryacht* magazine.



Subscribe to our **FREE** e-newsletter!



Stay up to date on all of our latest blogs and articles.

RHUMBLINE

[Click here to subscribe](#) ➤

BOATS

BOAT TESTS

Ferretti 630

By [Alan Harper](#)



Boat Tests

SPECIFICATIONS

Builder: Ferretti

LOA: 65'6"

Model: 630

Beam: 18'2"

Model Year: 2006

Draft: 5'3"

Boat Type: Cruiser

Weight: 93,256 lbs.

Standard Power: 2/1,100-hp MAN V10 CRM diesel inboards

Optional Power: 2/1,224-hp MAN V12 1224 CRM diesel inboards

Fuel Capacity: 1,004 gal.

Water Capacity: 262 gal.

STANDARD EQUIPMENT

Mitsubishi anti-rolling gyro system

Glendinning shorepower cable

13.1-hp Side-Power bow thruster

66-lb. Bruce anchor with 328-ft. of 12mm chain



Subscribe to our **FREE** e-newsletter!



Stay up to date on all of our latest blogs and articles.

RHUMBLINE

[Click here to subscribe](#) ➤

BOATS

BOAT TESTS

Ferretti 630

By [Alan Harper](#)



TEST BOAT SPECIFICATIONS

Test Engine: 2/1,224-hp MAN V12 1224 CRM diesel inboards

Transmission/Ratio: ZF/2.57:1

Props: 37x52 six-blade Rolla

Steering: BCS electrohydraulic w/ power-assist

Price as Tested: not available



Subscribe to our **FREE** e-newsletter!



Stay up to date on all of our latest blogs and articles.

RHUMBLINE

[Click here to subscribe](#) ➤

BOATS

BOAT TESTS

Mochi Craft 44 Dolphin

By [Jeffrey Moser](#)



Boat Tests

SPECIFICATIONS

Builder: Mochi Craft

LOA: 44'9"

Model: 44 Dolphin

Beam: 14'10"

Model Year: 2006

Draft: 4'4"

Boat Type: Down East

Weight: 31,747 lbs.

Standard Power: 2/500-hp Volvo Penta D9-500 diesel inboards

Optional Power: 2/575-hp Volvo Penta D9-575 diesel inboards

Fuel Capacity: 423 gal.

Water Capacity: 135 gal.



Subscribe to our **FREE e-newsletter!**



Stay up to date on all of our latest blogs and articles.

RHUMBLINE

[Click here to subscribe](#) ➤

BOATS

BOAT TESTS

Mochi Craft 44 Dolphin

By [Jeffrey Moser](#)



TEST BOAT SPECIFICATIONS

Test Engine: 2/575-hp Volvo Penta D9-575 diesel inboards

Transmission/Ratio: ZF 286/1.562 :1

Props: 26X37 4-blade Nibral

Steering: BCS hydraulic w/ power assist

Price as Tested: available by request



Subscribe to our **FREE e-newsletter!**



Stay up to date on all of our latest blogs and articles.

RHUMBLINE

[Click here to subscribe ►](#)

BOATS

BOAT TESTS

Viking Sport Cruisers V65 Express

By [George L. Petrie](#)



Boat Tests

SPECIFICATIONS

Builder: Viking Sport Cruisers

LOA: 65'5"

Model: V65 Express

Beam: 16'11"

Model Year: 2006

Draft: 4'3"

Boat Type: Cruiser

Weight: 69,440 lbs

Standard Power: 2/1,100-hp MAN V10 1100 CRM diesel inboards

Optional Power: 2/1,360-hp MAN V12 1360 CRM diesel inboards

Fuel Capacity: 1,000 gal.

Water Capacity: 180 gal.

STANDARD EQUIPMENT

27.5-kW Onan diesel genset w/hushbox
72,000-BTU Cruisair six-zone A/C
Raymarine radar, GPS, plotter, and autopilot
tender garage w/ launch and retrieval system
teak-laid cockpit, swim platform, and steps
retractable hardtop
bow thruster
32" LCD TV/DVD in saloon



Subscribe to our **FREE e-newsletter!**

POWER
& MOTORYACHT

Stay up to date on all of our
latest blogs and articles.

RHUMBLINE

Click here to subscribe ➤

BOATS

BOAT TESTS

Viking Sport Cruisers V65 Express

By [George L. Petrie](#)



TEST BOAT SPECIFICATIONS

Test Engine: 2/1,360-hp MAN V12 1360 CRM diesel inboards

Transmission/Ratio: ZF/2.00:1

Props: 32x50 5-blade nibril (S&S Propeller)

Steering: HyPro hydraulic

Price as Tested: \$3,015,145

OPTIONAL EQUIPMENT ON TEST BOAT

upgrade to Furuno autopilot, 1944C GPS/plotter/radar, RD30 depth and speed log
passarelle



Subscribe to our **FREE e-newsletter!**



Stay up to date on all of our latest blogs and articles.

RHUMBLINE

[Click here to subscribe ►](#)

BOATS

BOAT TESTS

Carver 55 Marquis

By [Capt. Bill Pike](#)



Boat Tests

SPECIFICATIONS

Builder: Carver

LOA: 57'4"

Model: 55 Marquis

Beam: 16'0"

Model Year: 2006

Draft: 3'9"

Boat Type: Cruiser

Weight: 62,000 lbs.

Standard Power: 2/500-mhp Volvo Penta D9-500 diesel inboards

Optional Power: 2/575-mhp D9-575, 2/715-mhp D12-715, or 2/775-mhp D12-800 Volvo Penta diesel inboards

Fuel Capacity: 836 gal.

Water Capacity: 200 gal.

STANDARD EQUIPMENT

2/12-hp Volvo Penta QL thrusters (bow and stern)

LectraTab electric trim tabs

3/Aqua-Journey helm seats



Subscribe to our **FREE e-newsletter!**



Stay up to date on all of our latest blogs and articles.

RHUMBLINE

[Click here to subscribe](#) ➤

BOATS

BOAT TESTS

Carver 55 Marquis

By [Capt. Bill Pike](#)



TEST BOAT SPECIFICATIONS

Test Engine: 2/775-mhp Volvo Penta D12-800 diesel inboards

Transmission/Ratio: ZF325-1A/2.24:1

Props: 33x39 4-blade Nibral ZF New Foil

Steering: Teleflex Sea-Star Hydraulic

Price as Tested: \$1,450,000



Subscribe to our **FREE** e-newsletter!



Stay up to date on all of our latest blogs and articles.

RHUMBLINE

[Click here to subscribe](#) ➤

BOATS

BOAT TESTS

Pershing 56

By [Jeffrey Moser](#)



Boat Tests

SPECIFICATIONS

Builder: Pershing

LOA: 59'6"

Model: 56

Beam: 15'9"

Model Year: 2006

Draft: 4'5"

Boat Type: Other...

Weight: 845 gal.

Standard Power: 2/1,360-hp MAN V12 1360 CRM diesel inboards

Optional Power: none

Fuel Capacity: 845 gal.

Water Capacity: 195 gal.

STANDARD EQUIPMENT

pearwood interior with wenge and ivorywood inlays
teak cockpit sole, side decks, and swim platform



Subscribe to our **FREE e-newsletter!**



Stay up to date on all of our latest blogs and articles.

RHUMBLINE

Click here to subscribe ➤

BOATS

BOAT TESTS

Pershing 56

By [Jeffrey Moser](#)



TEST BOAT SPECIFICATIONS

Test Engine: 2/1,360-hp MAN V12 1360 CRM diesel inboards

Transmission/Ratio: ZF 665/1.76:1

Props: 331/2 x 441/2 5-blade Rolla

Steering: BCS hydraulic w/ power assist

Price as Tested: Upon request



Subscribe to our **FREE** e-newsletter!



Stay up to date on all of our latest blogs and articles.

RHUMBLINE

[Click here to subscribe](#) ➤

BOATS

BOAT TESTS

Uniesse 58

By [George L. Petrie](#)



Boat Tests

SPECIFICATIONS

Builder: Uniesse
Model: Uniesse 58
Model Year: 2006
Boat Type: Cruiser

LOA: 58'9"

Beam: 16'0"

Draft: 5'0"

Weight: 69,530 lbs.

Standard Power: 2/800-hp MAN R6-800 CRM or 2/800-hp Caterpillar 3406E diesel inboards

Optional Power: 2/900-hp MAN, 2/1,015-hp Caterpillar, or 2/1,100-hp MAN diesel inboards

Fuel Capacity: 755 gal.

Water Capacity: 205 gal.



Subscribe to our **FREE e-newsletter!**



Stay up to date on all of our latest blogs and articles.

RHUMBLINE

[Click here to subscribe](#) ➤

BOATS

BOAT TESTS

Uniesse 58

By [George L. Petrie](#)



TEST BOAT SPECIFICATIONS

Test Engine: 2/800-hp Caterpillar 3406E diesel inboards

Transmission/Ratio: ZF/2.04:1

Props: 31.5x42 4-blade nibral

Steering: BCS hydraulic

Price as Tested: \$1,759,282



Subscribe to our **FREE e-newsletter!**

POWER
& MOTORYACHT

Stay up to date on all of our
latest blogs and articles.

RHUMBLINE

[Click here to subscribe](#) ➤

BOATS

BOAT TESTS

Jefferson 82 Starship Pilothouse

By [Capt. Bill Pike](#)



Boat Tests

SPECIFICATIONS

Builder: Jefferson

LOA: 82'0"

Model: 82 Starship Pilothouse

Beam: 20'8"

Model Year: 2006

Draft: 5'8"

Boat Type: Other...

Weight: 170,000 lbs.

Standard Power: 2/1,502-bhp MTU 10V 2000 M93
diesel inboards

Optional Power: various diesel engines from
Caterpillar and MTU up to 1,800 bhp apiece



Subscribe to our **FREE e-newsletter!**

POWER
& MOTORYACHT

Stay up to date on all of our
latest blogs and articles.

RHUMBLINE

Click here to subscribe ➤

BOATS

BOAT TESTS

Jefferson 82 Starship Pilothouse

By [Capt. Bill Pike](#)



TEST BOAT SPECIFICATIONS

Test Engine: 2/1,502-bhp MTU 10V 2000 M93 diesel inboards

Transmission/Ratio: ZF 20F0 A/2.47:1

Props: 42x35 Hung Shen bronze 5-blade

Steering: Hynautic hydraulic w/ power assist off port engine

Price as Tested: \$3,438,600



Subscribe to our **FREE** e-newsletter!



Stay up to date on all of our latest blogs and articles.

RHUMBLINE

[Click here to subscribe](#) ➤

BOATS

BOAT TESTS

Elling E3

By [George L. Petrie](#)



Boat Tests

SPECIFICATIONS

Builder: Elling

LOA: 45'0"

Model: E3

Beam: 14'0"

Model Year: 2006

Draft: 4'0"

Boat Type: Cruiser

Weight: 26,000 lbs.

Standard Power: 1/450-hp Cummins 6CTA8.3 diesel inboard

Optional Power: 1/370-hp Cummins diesel inboard
1/180-hp Cummins diesel inboard

Fuel Capacity: 400 gal.

Water Capacity: 290 gal.



Subscribe to our **FREE e-newsletter!**

POWER
& MOTORYACHT

Stay up to date on all of our
latest blogs and articles.

RHUMBLINE

Click here to subscribe ➤

BOATS

BOAT TESTS

Elling E3

By [George L. Petrie](#)



TEST BOAT SPECIFICATIONS

Test Engine: 1/180-hp Cummins 6BT diesel inboard

Transmission/Ratio: Twindisc 2.5:1

Props: 25x20 Custom made 5-blade nibril

Steering: Vetus hydraulic

Price as Tested: \$ 740,200* with 1/180-hp Cummins 6BTA5.9 diesel inboard; \$ 775,279* with 1/450-hp Cummins 6CTA8.3 diesel inboard



Subscribe to our **FREE** e-newsletter!

POWER
& MOTORYACHT

Stay up to date on all of our
latest blogs and articles.

RHUMBLINE

[Click here to subscribe](#) ➤

BOATS

BOAT TESTS

Sea Ray 36 Sedan Bridge

By [Capt. Richard Thiel](#)



Boat Tests

SPECIFICATIONS

Builder: Sea Ray

Model: 36 Sedan Bridge

Model Year: 2006

Boat Type: Other...

LOA: 37'6"

Beam: 13'0"

Draft: 3'4"

Weight: 20,500 lbs.

Standard Power: 2/370-hp MerCruiser 8.1S Horizon
gasoline inboards

Optional Power: 2/364-hp Cummins MerCruiser QSB
380 diese

Fuel Capacity: 300 gal.



Subscribe to our **FREE** e-newsletter!

POWER
& MOTORYACHT

Stay up to date on all of our
latest blogs and articles.

RHUMBLINE

Click here to subscribe ➤

BOATS

BOAT TESTS

Sea Ray 36 Sedan Bridge

By [Capt. Richard Thiel](#)



TEST BOAT SPECIFICATIONS

Test Engine: 2/370-hp MerCruiser 8.1S Horizon gasoline inboards

Transmission/Ratio: ZF Hurth/2.71:1

Props: 22x23 3-blade nibrals

Steering: SeaStar hydraulic, power-assisted

Price as Tested: \$380,471





Subscribe to our **FREE e-newsletter!**



Stay up to date on all of our latest blogs and articles.

RHUMBLINE

[Click here to subscribe](#) ➤

BOATS

BOAT TESTS

Hampton 740 Pilothouse

By [Capt. Patrick Sciacca](#)



Boat Tests

SPECIFICATIONS

Builder: Hampton

LOA: 75'0" (w/ swim platform)

Model: 740 Pilothouse

Beam: Beam: 18'2"

Model Year: 2006

Draft: Draft: 4'10"

Boat Type: Sportfisherman

Weight: 93,500 lbs.

Optional Power: none

Fuel Capacity: 1,500 gal.

Water Capacity: 400 gal.

This article originally appeared in the July 2006 issue of *Power & Motoryacht* magazine.







Subscribe to our **FREE e-newsletter!**



Stay up to date on all of our latest blogs and articles.

RHUMBLINE

[Click here to subscribe](#) ➤

BOATS

BOAT TESTS

Hampton 740 Pilothouse

By [Capt. Patrick Sciacca](#)



TEST BOAT SPECIFICATIONS

Test Engine: 2/1,000-hp Caterpillar C18 diesel inboards

Price as Tested: \$2,250,000

This article originally appeared in the July 2006 issue of *Power & Motoryacht* magazine.





Subscribe to our **FREE e-newsletter!**



Stay up to date on all of our latest blogs and articles.

RHUMBLINE

[Click here to subscribe](#) ➤

BOATS

BOAT TESTS

Davis 52 Express

By [Capt. Bill Pike](#)



Boat Tests

SPECIFICATIONS

Builder: Davis

LOA: 52'6"

Model: 52 Express

Beam: 16'0"

Model Year: 2006

Draft: 4'4"

Boat Type: Sportfisherman

Weight: 55,000 lbs.

Standard Power: 2/1,015 mph Caterpillar C18 diesel inboards

Optional Power: 2/1,200-mhp MTU 8V 2000 or 2/1,360-mhp MAN V12 1360 CRM diesel inboards

Fuel Capacity: 1,000 gal.

Water Capacity: 150 gal.



Subscribe to our **FREE e-newsletter!**

POWER
& MOTORYACHT

Stay up to date on all of our latest blogs and articles.

RHUMBLINE

[Click here to subscribe](#) ➤

BOATS

BOAT TESTS

Davis 52 Express

By [Capt. Bill Pike](#)



TEST BOAT SPECIFICATIONS

Test Engine: 2/1,360-mhp MAN V12 1360 CRM diesel inboards

Transmission/Ratio: ZF 2050/1.76:1

Props: 31x46 4-blade nibral

Steering: Teleflex SeaStar hydraulic w/ power-assist

Price as Tested: \$1,526,000





Subscribe to our **FREE** e-newsletter!



Stay up to date on all of our latest blogs and articles.

RHUMBLINE

[Click here to subscribe](#) ➤

BOATS

BOAT TESTS

Heesen Man of Steel

By [Diane M. Byrne](#)



Boat Tests

SPECIFICATIONS

Builder: Heesen

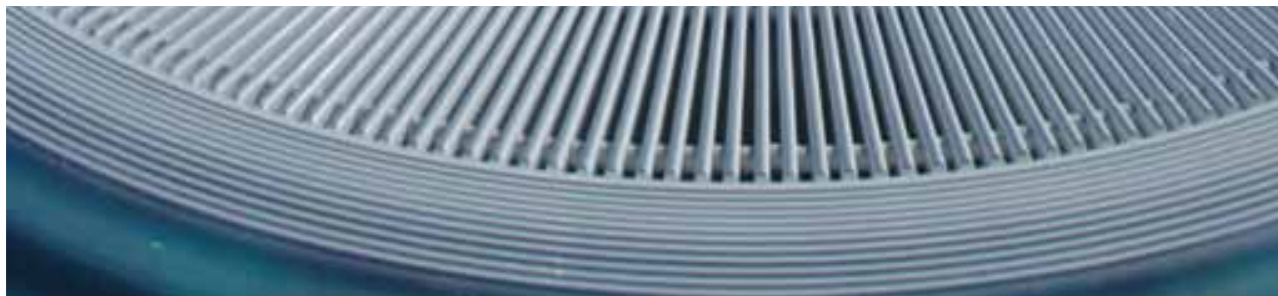
LOA: 120'7"

Model: Man of Steel

Beam: 23'3"

Model Year: 2006

Draft: 7'2"



Boat Tests

SPECIFICATIONS

Builder: Heesen

Model: Man of Steel

Model Year: 2006

Boat Type: Megayacht (> 80')

Construction aluminum hull and superstructure

Classification ABS XA1 Yachting Service AMS

Engines 2/1,801-hp MTU 16V 4000 M90 diesel inboards

Watermakers HEM

Windlass Ascon

Air Conditioning Marine Air

Electronics Furuno radar and depthfinder, Leica GPS, C Plath autopilot, C Plath magnetic compass, B&G wind instruments

Exterior Paint Awlgrip

Interior Design Omega Architects, Stephanie Zekelman

Exterior Styling Omega Architects

Naval Architecture Heesen Yachts Design Team

Builder Heesen Yachts

LOA: 120'7"

Subscribe to our **FREE** e-newsletter!

POWER
& MOTOR YACHT

Stay up to date on all of our latest blogs and articles.

RHUMBLINE

[Click here to subscribe](#) ➤

BOATS

BOAT TESTS

Heesen Man of Steel

By [Diane M. Byrne](#)



TEST BOAT SPECIFICATIONS

This article originally appeared in the June 2006 issue of *Power & Motoryacht* magazine.



Subscribe to our **FREE** e-newsletter!



Stay up to date on all of our latest blogs and articles.

RHUMBLINE

[Click here to subscribe](#) ➤

BOATS

BOAT TESTS

Marlow Prowler Open 375

By [Jeffrey Moser](#)



Boat Tests

SPECIFICATIONS

Builder: Marlow

LOA: 37'6"

Model: Prowler Open 375

Beam: 12'0"

Model Year: 2006

Draft: 1'10" (engines down)

Boat Type: Other...

Weight: (half load): 14,000 lbs.

Optional Power: 2/250-hp or 3/250-hp Evinrude E-Tec two-stroke gasoline outboards; 2/440-hp Yanmar 6YL2A-STP, 2/480-hp Yanmar 6YL3A-ETP, or 2/500-hp Yanmar 6CXM-GTE2 diesel inboards

Fuel Capacity: 400 gal.

Water Capacity: 60 gal.

STANDARD EQUIPMENT

Burmese teak interior w/ ebony inlays
teak toerail



Subscribe to our **FREE e-newsletter!**



Stay up to date on all of our latest blogs and articles.

RHUMBLINE

[Click here to subscribe](#) ➤

BOATS

BOAT TESTS

Marlow Prowler Open 375

By [Jeffrey Moser](#)



TEST BOAT SPECIFICATIONS

Test Engine: 3/250-hp Evinrude E-Tec two-stroke gasoline outboards

Transmission/Ratio: Evinrude/1.85:1

Props: 141/2x21

Steering: SeaStar hydraulic w/ power assist

Price as Tested: \$380,000



Subscribe to our **FREE** e-newsletter!



Stay up to date on all of our latest blogs and articles.

RHUMBLINE

[Click here to subscribe](#) ➤

BOATS

BOAT TESTS

Fairline Squadron 66

By [Capt. Richard Thiel](#)



Boat Tests

SPECIFICATIONS

Builder: Fairline

LOA: 69'6"

Model: Squadron 66

Beam: 17'9"

Model Year: 2006

Draft: 4'8"

Boat Type: Cruiser

Weight: 80,469 lbs.

Standard Power: 2/1,360-mhp MAN 1360 CRM diesel inboards

Optional Power: 2/1,550-hp Caterpillar C30 diesel inboards

Fuel Capacity: 1,068 gal.

Water Capacity: 286 gal.



Subscribe to our **FREE e-newsletter!**



Stay up to date on all of our latest blogs and articles.

RHUMBLINE

[Click here to subscribe](#) ➤

BOATS

BOAT TESTS

Fairline Squadron 66

By [Capt. Richard Thiel](#)



TEST BOAT SPECIFICATIONS

Test Engine: 2/1,550-mph Caterpillar C30 diesel engines

Transmission/Ratio: ZF/2.03:1

Props: 34x48 5-blade nibrals

Steering: SeaStar hydraulic, power-assisted

Price as Tested: \$3,193,137



Subscribe to our **FREE** e-newsletter!



Stay up to date on all of our latest blogs and articles.

RHUMBLINE

Click here to subscribe ➤

BOATS

BOAT TESTS

Azimut 62S

By [Alan Harper](#)



Boat Tests

SPECIFICATIONS

Builder: Azimut

LOA: 62'4"

Model: 62S

Beam: 16'4"

Model Year: 2006

Draft: 5'0"

Boat Type: Other...

Weight: 67,725 lbs.

Standard Power: 2/1,015-hp Caterpillar C18 diesel inboards

Fuel Capacity: 713 gal.

Water Capacity: 238 gal.

STANDARD EQUIPMENT

'55-lb. Delta anchor w/246-ft. 10mm chain

Quick 1000 bow thruster

electro-hydraulic garage door, swim ladder and 9'6" passerelle

10.7-hp electric bow thruster



Subscribe to our **FREE e-newsletter!**

POWER
& MOTORYACHT

Stay up to date on all of our
latest blogs and articles.

RHUMBLINE

Click here to subscribe ➤

BOATS

BOAT TESTS

Azimut 62S

By [Alan Harper](#)



TEST BOAT SPECIFICATIONS

Test Engine: 2/1,015-hp Caterpillar C18 diesel inboards

Transmission/Ratio: ZF V-drive/1.96:1

Props: 32.8 x 43.7 4-blade nibrals

Steering: SeaStar hydraulic w/ power assist

Price as Tested: \$2,300,000

OPTIONAL EQUIPMENT ON TEST BOAT

71,000-Btu tropical A/C
17-kW Kohler genset
crew cabin



Subscribe to our **FREE** e-newsletter!

POWER
& MOTORYACHT

Stay up to date on all of our latest blogs and articles.

RHUMBLINE

Click here to subscribe ➤

BOATS

BOAT TESTS

Formula 45

By [Capt. Patrick Sciacca](#)



Boat Tests

SPECIFICATIONS

Builder: Formula

Model: 45

Model Year: 2006

Boat Type: Cruiser

LOA: 48'2"

Beam: 13'11"

Draft: 3'5"

Weight: 30,500 lbs.

Standard Power: 2/540-hp Cummins QSM 540 diesel V-drives

Optional Power: 2/575-hp Volvo Penta D9 DPH diesel V-drives



Subscribe to our **FREE** e-newsletter!



Stay up to date on all of our latest blogs and articles.

RHUMBLINE

[Click here to subscribe](#) ➤

BOATS

BOAT TESTS

Formula 45

By [Capt. Patrick Sciacca](#)



TEST BOAT SPECIFICATIONS

Test Engine: 2/575-hp Volvo Penta DPH D9 diesel V-drives

Transmission/Ratio: ZF/2:1

Props: 26x35 4-blade nibrals

Steering: Teleflex SeaStar hydraulic w/ power-assist

Price as Tested: \$873,825

OPTIONAL EQUIPMENT ON TEST BOAT

Flagship Imron graphic sapphire blue metallic hull color
forward cockpit Ultraleather seating
Ralph Lauren decor package



Subscribe to our **FREE e-newsletter!**

POWER
& MOTORYACHT

Stay up to date on all of our latest blogs and articles.

RHUMBLINE

Click here to subscribe ➤

BOATS

BOAT TESTS

Cruisers 447 Sport Sedan

By [Capt. Patrick Sciacca](#)



Boat Tests

SPECIFICATIONS

Builder: Cruisers Yachts

Model: 447 Sport Sedan

Model Year: 2006

Boat Type: Other...

LOA: 45'2"

Beam: 14'6"

Draft: 3'10"

Weight: 29,500 lbs.

Standard Power: 2/420-hp Volvo Penta 8.1 Gxi gasoline V-drives

Optional Power: 2/370-hp Volvo Penta IPS 500; various diesel V-drive models from Volvo Penta and Yanmar to a total of 960 hp

Fuel Capacity: 375 gal.



Subscribe to our **FREE e-newsletter!**

POWER
& MOTORYACHT

Stay up to date on all of our
latest blogs and articles.

RHUMBLINE

Click here to subscribe ➤

BOATS

BOAT TESTS

Cruisers 447 Sport Sedan

By [Capt. Patrick Sciacca](#)



TEST BOAT SPECIFICATIONS

Test Engine: 2/480-hp Yanmar 6LY3-ETP diesel V-drives

Transmission/Ratio: ZF/2.5:1

Props: 24x31 4-blade, no-cup Michigan Wheel

Steering: Teleflex SeaStar hydraulic

Price as Tested: \$670,450



Subscribe to our **FREE e-newsletter!**

POWER
& MOTORYACHT

Stay up to date on all of our
latest blogs and articles.

RHUMBLINE

[Click here to subscribe ►](#)

BOATS

BOAT TESTS

Grand Banks 59 Aleutian RP

By [Capt. Bill Pike](#)



Boat Tests

SPECIFICATIONS

Builder: Grand Banks

LOA: 58'7"

Model: 59 Aleutian RP

Beam: 17'0"

Model Year: 2006

Draft: 4'10"

Boat Type: Trawler

Weight: 81,990 lbs.

Standard Power: 2/503-bhp Caterpillar C9 diesel inboards

Optional Power: 2/853-bhp Caterpillar C15 or 2/1,001-bhp Caterpillar C18 diesel inboards

Fuel Capacity: 1,400 gal.

Water Capacity: 425 gal.

STANDARD EQUIPMENT

Miele cooktop

Fisher & Paykel dishwasher



Subscribe to our **FREE e-newsletter!**



Stay up to date on all of our latest blogs and articles.

RHUMBLINE

[Click here to subscribe](#) ➤

BOATS

BOAT TESTS

Grand Banks 59 Aleutian RP

By [Capt. Bill Pike](#)



TEST BOAT SPECIFICATIONS

Test Engine: 2/1,000-hp Caterpillar C18 diesel inboards

Transmission/Ratio: Twin Disc MGX-5135A/ 2.52:1

Props: 38x41.5 five-blade nibrals

Steering: Teleflex SeaStar hydraulic w/ power-assist



Subscribe to our **FREE** e-newsletter!



Stay up to date on all of our latest blogs and articles.

RHUMBLINE

[Click here to subscribe](#) ➤

BOATS

BOAT TESTS

Vicem 67 Flybridge

By [Jeffrey Moser](#)



Boat Tests

SPECIFICATIONS

Builder: Vicem

LOA: 67'0"

Model: 67 Flybridge

Beam: 18'5"

Model Year: 2006

Draft: 5'3"

Boat Type: Down East

Weight: 71,000 lbs.

Standard Power: 2/900-hp MAN V8 900 CRM diesel inboards

Optional Power: 2/1,100-hp MAN V10 1100 CRM or 2/1,360-hp MAN V12 1360 CRM diesel inboards

Fuel Capacity: 950 gal.

Water Capacity: 260 gal.



Subscribe to our **FREE e-newsletter!**

POWER
& MOTORYACHT

Stay up to date on all of our
latest blogs and articles.

RHUMBLINE

Click here to subscribe ➤

BOATS

BOAT TESTS

Vicem 67 Flybridge

By [Jeffrey Moser](#)



TEST BOAT SPECIFICATIONS

Test Engine: 2/900-hp MAN V8 900 CRM diesel inboards

Transmission/Ratio: ZF/2:1

Props: 4-blade bronze, size not available

Steering: BCS hydraulic w/ power assist

Price as Tested: \$2,500,000



Subscribe to our FREE e-newsletter!



Stay up to date on all of our latest blogs and articles.

RHUMBLINE

[Click here to subscribe](#) ►

BOATS

BOAT TESTS

Sculley 60

By [Capt. Patrick Sciacca](#)



Boat Tests

SPECIFICATIONS

Builder: Sculley Boatbuilders

LOA: 60'0"

Model:

Beam: 18'0"

Model Year: 2006

Draft: 5'0"

Boat Type: Sportfisherman

Weight: 62,000 lbs.

Standard Power: 2/1,650-mhp Caterpillar C32 diesel inboards

Optional Power: 2/1,825-mhp Caterpillar C32A diesel inboards

Fuel Capacity: 1,650 gal.

Water Capacity: 250 gal.

STANDARD EQUIPMENT

cedar-lined stateroom lockers

LCD TVs in guest and master staterooms



Subscribe to our **FREE e-newsletter!**



Stay up to date on all of our latest blogs and articles.

RHUMBLINE

[Click here to subscribe](#) ➤

BOATS

BOAT TESTS

Sculley 60

By [Capt. Patrick Sciacca](#)



TEST BOAT SPECIFICATIONS

Test Engine: 2/1,650-hp Caterpillar C32 diesel inboards

Transmission/Ratio: ZF/1.75:1

Props: 34x45 5-blade Veems

Steering: Hydraulic w/ power assist

Price as Tested: \$3,000,000

OPTIONAL EQUIPMENT ON TEST BOAT

800-gpd Sea Recovery watermaker
Eskimo E600 ice maker
engine room A/C
under-deck wet/dry vacuum
Rupp outriggers and center 'rigger
Bausch tower w/ custom hardtop
spare propellers



Subscribe to our **FREE** e-newsletter!



Stay up to date on all of our latest blogs and articles.

RHUMBLINE

[Click here to subscribe](#) ➤

BOATS

BOAT TESTS

Albemarle 360 XF

By [George L. Petrie](#)



Boat Tests

SPECIFICATIONS

Builder: Albemarle

LOA: 38'6"

Model: 360 XF

Beam: 13'11"

Model Year: 2006

Draft: 4'0"

Boat Type: Sportfisherman

Weight: 25,000 lbs.

Standard Power: 2/500-hp Caterpillar C9 diesel inboards

Optional Power: 2/575-hp Caterpillar C9 ACERT diesel inboards

Fuel Capacity: 535 gal.

Water Capacity: 95 gal.



Subscribe to our **FREE e-newsletter!**



Stay up to date on all of our latest blogs and articles.

RHUMBLINE

[Click here to subscribe](#) ➤

BOATS

BOAT TESTS

Albemarle 360 XF

By [George L. Petrie](#)



TEST BOAT SPECIFICATIONS

Test Engine: 2/575-hp Caterpillar C9 ACERT diesel inboards

Transmission/Ratio: ZF/1.75:1

Props: 24x35 4-blade S&S nibral

Steering: Teleflex Sea Star hydraulic

Price as Tested: \$511,230



Subscribe to our **FREE e-newsletter!**



Stay up to date on all of our latest blogs and articles.

RHUMBLINE

[Click here to subscribe ►](#)

BOATS

BOAT TESTS

38 Wilbur/Duffy

By [Elizabeth Ginns Britten](#)



Boat Tests

SPECIFICATIONS

Builder: Wilbur

LOA: 38'6"

Model: 38 Wilbur/Duffy

Beam: 14'0"

Model Year: 2005

Draft: 3'2"

Boat Type: Down East

Weight: 28,000 lbs.

Standard Power: 1/800-hp Caterpillar 3406E diesel inboard

Optional Power: customer preference

Fuel Capacity: 500 gal.

Water Capacity: 105 gal.

STANDARD EQUIPMENT

none
custom boat

OPTIONAL EQUIPMENT

12,000-Btu Marine Air A/C in master
16,000-Btu Marine Air A/C in saloon



Subscribe to our **FREE e-newsletter!**



Stay up to date on all of our latest blogs and articles.

RHUMBLINE

[Click here to subscribe](#) ➤

BOATS

BOAT TESTS

38 Wilbur/Duffy

By [Elizabeth Ginns Britten](#)



TEST BOAT SPECIFICATIONS

Test Engine: 1/800-hp Caterpillar 3406E diesel inboard

Transmission/Ratio: ZF 350A/2.077:1

Props: 32x33 3-blade KCA

Steering: Hynautic hydraulic

Price as Tested: \$850,000



Subscribe to our **FREE** e-newsletter!



Stay up to date on all of our latest blogs and articles.

RHUMBLINE

[Click here to subscribe](#) ➤

BOATS

BOAT TESTS

Riviera 47G2 Convertible

By [Capt. Patrick Sciacca](#)



Boat Tests

SPECIFICATIONS

Builder: Riviera

LOA: 53'1"

Model: 47G2 Convertible

Beam: 16'1"

Model Year: 2005

Draft: 4'5"

Boat Type: Sportfisherman

Weight: 43,200 lbs.

Standard Power: 2/660-hp Cummins QSM11 diesel inboards

Optional Power: 2/700-hp Caterpillar C12 or 2/825-hp MTU Series 60 diesel inboards

Fuel Capacity: 713 gal.

Water Capacity: 164 gal.



Subscribe to our **FREE e-newsletter!**

POWER
& MOTORYACHT

Stay up to date on all of our
latest blogs and articles.

RHUMBLINE

Click here to subscribe ➤

BOATS

BOAT TESTS

Riviera 47G2 Convertible

By [Capt. Patrick Sciacca](#)



TEST BOAT SPECIFICATIONS

Test Engine: 2/825-hp MTU Series 60 diesel inboards

Transmission/Ratio: Twin Disc QuickShift/1.75:1

Props: 27x37 4-blade S&S

Steering: SeaStar hydraulic

Price as Tested: \$1,100,000



Subscribe to our **FREE** e-newsletter!



Stay up to date on all of our latest blogs and articles.

RHUMBLINE

[Click here to subscribe](#) ➤

BOATS

BOAT TESTS

Azimut 85

By [Alan Harper](#)



Boat Tests

SPECIFICATIONS

Builder: Azimut

LOA: 88'0"

Model: 85

Beam: 21'0"

Model Year: 2005

Draft: 5'10"

Boat Type: Megayacht (> 80')

Weight: 176,400 lbs.

Standard Power: 2/1,825-hp Caterpillar C32A diesel inboards

Optional Power: 2/1,572-mhp Caterpillar C30, 2/1,675-mhp Caterpillar C32, or 2/2,030-mhp MTU 16V 2000 M91 diesel inboards

Fuel Capacity: 2,378 gal.

Water Capacity: 396 gal.



Subscribe to our **FREE e-newsletter!**

POWER
& MOTORYACHT

Stay up to date on all of our
latest blogs and articles.

RHUMBLINE

Click here to subscribe ➤

BOATS

BOAT TESTS

Azimut 85

By [Alan Harper](#)



TEST BOAT SPECIFICATIONS

Test Engine: 2/1,825-hp Caterpillar C32A diesel inboards

Transmission/Ratio: ZF 3000 V drives/2.5:1

Props: 41 1/3 x 56 1/2 4-blade nibrals

Steering: BCS hydraulic power assisted

Price as Tested: \$6,424,000



Subscribe to our **FREE** e-newsletter!



Stay up to date on all of our latest blogs and articles.

RHUMBLINE

[Click here to subscribe](#) ➤

BOATS

BOAT TESTS

Oyster LD43

By [Jeffrey Moser](#)



Boat Tests

SPECIFICATIONS

Builder: Oyster Marine

LOA: 43'6"

Model: Oyster LD43

Beam: 13'1"

Model Year: 2006

Draft: 2'3"

Boat Type: Down East

Weight: 20,950 lbs.

Standard Power: 2/440-hp Yanmar 6YL2-STP diesel inboards

Optional Power: none

Fuel Capacity: 435 gal.

Water Capacity: 95 gal.



Subscribe to our **FREE e-newsletter!**

POWER
& MOTORYACHT

Stay up to date on all of our
latest blogs and articles.

RHUMBLINE

[Click here to subscribe](#) ➤

BOATS

BOAT TESTS

Oyster LD43

By [Jeffrey Moser](#)



TEST BOAT SPECIFICATIONS

Test Engine: 2/440-hp Yanmar 6YL2-STP diesel inboards

Transmission/Ratio: ZF280 1/1.214:1

Props: Hamilton HJ 292 waterjet

Steering: Hamilton Blue Arrow hydraulic



Subscribe to our **FREE** e-newsletter!



Stay up to date on all of our latest blogs and articles.

RHUMBLINE

[Click here to subscribe](#) ➤

BOATS

BOAT TESTS

Regal 2860 Window Express

By [Capt. Bill Pike](#)



Boat Tests

SPECIFICATIONS

Builder: Regal

LOA: 29'5"

Model: 2860 Window Express

Beam: 8'6"

Model Year: 2006

Draft: 3'3"

Boat Type: Cruiser

Weight: 9,000 lbs.

Standard Power: 2/225-hp Volvo Penta 4.3/DuoProp gasoline stern drives

Optional Power: 2/220-hp MerCruiser 4.3 MPI gasoline stern drives; 2/170-hp Cummins MerCruiser 2.8ES 170 diesel stern drives

Fuel Capacity: 100 gal.

Water Capacity: 35 gal.



Subscribe to our **FREE e-newsletter!**



Stay up to date on all of our latest blogs and articles.

RHUMBLINE

[Click here to subscribe](#) ➤

BOATS

BOAT TESTS

Regal 2860 Window Express

By [Capt. Bill Pike](#)



TEST BOAT SPECIFICATIONS

Test Engine: 2/225-hp Volvo Penta 4.3/DuoProp gasoline stern drives

Transmission/Ratio: Volvo Penta DuoProp/2.32:1

Props: Volvo Penta F7 DuoProp

Steering: Power-assisted Teleflex Sea Star hydraulic

Price as Tested: \$148,157



Subscribe to our **FREE** e-newsletter!



Stay up to date on all of our latest blogs and articles.

RHUMBLINE

[Click here to subscribe](#) ➤

BOATS

BOAT TESTS

Baia Azzurra 63

By [Jeffrey Moser](#)



Boat Tests

SPECIFICATIONS

Builder: Baia

LOA: 63'0"

Model: Azzurra 63

Beam: 16'6"

Model Year: 2006

Draft: 2'8"

Boat Type: Cruiser

Weight: 55,000 lbs.

Standard Power: 2/1,360-hp MAN V12 1360 CRM diesel inboards

Optional Power: 2/1,502-hp MTU 10V 2000 M93 diesel inboards

Fuel Capacity: 800 gal.

Water Capacity: 163 gal.



Subscribe to our **FREE** e-newsletter!



Stay up to date on all of our latest blogs and articles.

RHUMBLINE

[Click here to subscribe](#) ➤

BOATS

BOAT TESTS

Baia Azzurra 63

By [Jeffrey Moser](#)



TEST BOAT SPECIFICATIONS

Test Engine: 2/1,502-hp MTU 10V 2000 M93 diesel inboards

Transmission/Ratio: Twin Disc/1.5:1

Props: 5-blade Rolla; size not available

Steering: Arneson hydraulic

Price as Tested: \$2,135,636

OPTIONAL EQUIPMENT ON TEST BOAT

Side-Power bow thruster
teak swim platform
teak cockpit sole
Vitrifrigo ice maker
fridge/freezer



Subscribe to our **FREE** e-newsletter!



Stay up to date on all of our latest blogs and articles.

RHUMBLINE

[Click here to subscribe](#) ➤

BOATS

BOAT TESTS

Cabo Yachts 52 Express

By [Capt. Patrick Sciacca](#)



Boat Tests

SPECIFICATIONS

Builder: Cabo Yachts

LOA: 52'1"

Model: 52 Express

Beam: 17'9"

Model Year: 2006

Draft: 4'2"

Boat Type: Sportfisherman

Weight: 55,950 lbs.

Standard Power: 2/1,340-hp MAN V12-1360 CRM diesel inboards

Optional Power: 2/1,523-hp MTU 10V 2000, 2/1,550-hp MAN v12-1550 CRM, or 2/1,550-hp Caterpillar C32 diesel inboards

Fuel Capacity: 1,400 gal.

Water Capacity: 200 gal.



Subscribe to our **FREE e-newsletter!**



Stay up to date on all of our latest blogs and articles.

RHUMBLINE

[Click here to subscribe](#) ➤

BOATS

BOAT TESTS

Cabo Yachts 52 Express

By [Capt. Patrick Sciacca](#)



TEST BOAT SPECIFICATIONS

Test Engine: 2/1,550-hp MAN V12 1550 CRM diesel inboards

Props: 34x53 Veem five-blade

Steering: hydraulic w/ power assist

Price as Tested: \$1,846,370

OPTIONAL EQUIPMENT ON TEST BOAT

Pipewelders custom tuna tower package
teak-and-holly sole in saloon



Subscribe to our **FREE** e-newsletter!

POWER
& MOTORYACHT

Stay up to date on all of our
latest blogs and articles.

RHUMBLINE

[Click here to subscribe](#) ➤

BOATS

BOAT TESTS

Regulator 29 FS

By [Jeffrey Moser](#)



Boat Tests

SPECIFICATIONS

Builder: Regulator

LOA: 29'5"

Model: 29 FS

Beam: 9'6"

Model Year: 2006

Draft: 2'7"

Boat Type: Center Console

Weight: 6,900 lbs.

Standard Power: 2/250-hp Yamaha F250 four-stroke
gasoline outboards

Optional Power: none

Fuel Capacity: 285 gal.

Water Capacity: 20 gal.

STANDARD EQUIPMENT

Lenco trim tabs

Ritchie Navigator compass



Subscribe to our **FREE e-newsletter!**



Stay up to date on all of our latest blogs and articles.

RHUMBLINE

[Click here to subscribe](#) ➤

BOATS

BOAT TESTS

Regulator 29 FS

By [Jeffrey Moser](#)



TEST BOAT SPECIFICATIONS

Test Engine: 2/250-hp Yamaha F250 four-stroke gasoline outboards

Transmission/Ratio: Yamaha/2.00:1

Props: 15x21 3-blade s/s SWS II

Steering: Teleflex SeaStar hydraulic w/ power assist

Price as Tested: \$172,020



Subscribe to our **FREE e-newsletter!**

POWER
& MOTORYACHT

Stay up to date on all of our
latest blogs and articles.

RHUMBLINE

Click here to subscribe ➤

BOATS

BOAT TESTS

Buddy Davis 34 Center Console

By [Capt. Bill Pike](#)



Boat Tests

SPECIFICATIONS

Builder: Buddy Davis

LOA: 34'0"

Model: 34 Center Console

Beam: 10'6"

Model Year: 2006

Draft: 2'10"

Boat Type: Center Console

Weight: 9,520 lbs. (w/ engines, half load)

Standard Power: 2/275-Mercury Verado four-stroke gasoline outboards

Optional Power: twin outboards up to a total of 600 hp

Fuel Capacity: 315 gal.

Water Capacity: 60 gal.

STANDARD EQUIPMENT

Lenco Marine electric trim tabs
30-amp Guest Sportsman battery charger
2/Rule 1,500-gph bilge pumps
120-gal. livewell/fishbox w/ light
2/lockable, recessed rod lockers
6/gunwale-type rod holders
2/50-gal. in-deck fishboxes w/ macerators
1/70-gal. livewell/fishbox under casting platform

OPTIONAL EQUIPMENT

18" Taco outriggers
3-sided enclosure
fiberglass T-top w/ electronics box, PFD stowage, and 3/spreader lights

This article originally appeared in the March 2006 issue of *Power & Motoryacht* magazine.



BoatQuest.com

PassageMaker

POWER
& MOTORYACHT

AL

SHOW
MANAGEMENT

SOUNDINGS Trade Only

YACHTS

Subscribe to our **FREE e-newsletter!**

POWER
& MOTORYACHT

Stay up to date on all of our
latest blogs and articles.

RHUMBLINE

[Click here to subscribe](#) ➤

BOATS

BOAT TESTS

Buddy Davis 34 Center Console

By [Capt. Bill Pike](#)



TEST BOAT SPECIFICATIONS

Test Engine: 2/275-hp Mercury Verado four-stroke gasoline outboards

Transmission/Ratio: SmartCraft DTS (Digital Throttle & Shift)/1.85:1

Props: 15 1/2 x17 three-blade s/s

Steering: Mercury electro-hydraulic steering

Price as Tested: \$195,010

OPTIONAL EQUIPMENT ON TEST BOAT

18" Taco outriggers

3-sided enclosure

fiberglass T-top w/ electronics box, PFD stowage, and 3/spreader lights

This article originally appeared in the March 2006 issue of *Power & Motoryacht* magazine.



Subscribe to our **FREE** e-newsletter!



Stay up to date on all of our latest blogs and articles.

RHUMBLINE

[Click here to subscribe](#) ➤

BOATS

BOAT TESTS

Luhrs 41 Open

By [George L. Petrie](#)



Boat Tests

SPECIFICATIONS

Builder: Luhrs

LOA: 44'6"

Model: 41 Open

Beam: 15'9"

Model Year: 2006

Draft: 3'6"

Boat Type: Sportfisherman

Weight: 32,000 lbs.

Standard Power: 2/540-hp Cummins QSC-8.3 diesel inboards

Optional Power: 2/575-hp Volvo Penta D9 diesel inboards; 2/580-hp, 2/610-hp or 2/645-hp Cummins QSM-11 diesel inboards; 2/645-hp Yanmar 6SY-STP diesel inboards

Fuel Capacity: 600 gal.

Water Capacity: 130 gal.



Subscribe to our **FREE e-newsletter!**

POWER
& MOTORYACHT

Stay up to date on all of our
latest blogs and articles.

RHUMBLINE

Click here to subscribe ➤

BOATS

BOAT TESTS

Luhrs 41 Open

By [George L. Petrie](#)



TEST BOAT SPECIFICATIONS

Test Engine: 2/645-hp Yanmar 6SY-STP diesel inboards

Transmission/Ratio: ZF/1.75:1

Props: 26x34 Hy-Torq 5-blade w/ light cup

Steering: Teleflex Sea Star hydraulic

Price as Tested: \$773,500



Subscribe to our **FREE** e-newsletter!

POWER
& MOTORYACHT

Stay up to date on all of our
latest blogs and articles.

RHUMBLINE

Click here to subscribe ➤

BOATS

BOAT TESTS

Viking 68 Convertible

By [Capt. Richard Thiel](#)



Boat Tests

SPECIFICATIONS

Builder: Viking

LOA: 68'8" (w/ o pulpit)

Model: 68 Convertible

Beam: 19'4" (at rubrail)

Model Year: 2006

Draft: 5'5"

Boat Type: Cruiser

Weight: 115,000 lbs.

Standard Power: 2/1,520-mhp MTU 12V 2000 M91 diesel inboards

Optional Power: 2/1,570-mhp Caterpillar C30, 1,675-mhp Caterpillar C32, or 1,825-hp Caterpillar C32A or 2/2,030-mhp MTU 16V 2000 M91 diesel inboards

Fuel Capacity: 2,000 gal.

Water Capacity: 355 gal.

STANDARD EQUIPMENT

76,000-Btu 5-zone (incl. bridge) Cruisair A/C
Awlgrip engine room and bilges
Delta "T" engine room ventilation



Subscribe to our **FREE e-newsletter!**



Stay up to date on all of our latest blogs and articles.

RHUMBLINE

[Click here to subscribe](#) ➤

BOATS

BOAT TESTS

Viking 68 Convertible

By [Capt. Richard Thiel](#)



TEST BOAT SPECIFICATIONS

Test Engine: 2/2,030-mhp MTU 16V 2000 diesel inboards

Transmission/Ratio: ZF 2555/2.46:1

Props: Veem, dimensions proprietary

Steering: Teleflex SeaStar hydraulic, power-assisted

Price as Tested: \$3,996,893

OPTIONAL EQUIPMENT ON TEST BOAT

Lewmar capstan
cockpit sole livewell
SidePower bow thruster



Subscribe to our **FREE** e-newsletter!

POWER
& MOTORYACHT

Stay up to date on all of our
latest blogs and articles.

RHUMBLINE

Click here to subscribe ➤

BOATS

BOAT TESTS

Carver 42 Super Sport

By [Capt. Patrick Sciacca](#)



Boat Tests

SPECIFICATIONS

Builder: Carver

Model: 42 Super Sport

Model Year: 2006

Boat Type: Cruiser

LOA: 43'7"

Beam: 13'11"

Draft: 3'10"

Weight: 33,650 lbs.

Standard Power: 2/385-hp Crusader 8.1 MPI
gasoline inboards

Optional Power: various twin gasoline and diesel
inboards from Volvo Penta and Yanmar to 440 hp
apiece; 2/370-hp Volvo Penta IPS 500 diesels with
IPS drives

Fuel Capacity: 400 gal.



Subscribe to our **FREE e-newsletter!**

POWER
& MOTORYACHT

Stay up to date on all of our
latest blogs and articles.

RHUMBLINE

Click here to subscribe ➤

BOATS

BOAT TESTS

Carver 42 Super Sport

By [Capt. Patrick Sciacca](#)



TEST BOAT SPECIFICATIONS

Test Engine: 2/370-hp Volvo Penta IPS 500 diesels

Transmission/Ratio: Volvo Penta/1.94:1

Props: T3 propset

Steering: Volvo Penta electronic



Subscribe to our **FREE** e-newsletter!



Stay up to date on all of our latest blogs and articles.

RHUMBLINE

[Click here to subscribe](#) ➤

BOATS

BOAT TESTS

Chris-Craft Corsair 33

By [Elizabeth Ginns Britten](#)



Boat Tests

SPECIFICATIONS

Builder: Chris-Craft

LOA: 34'11"

Model: Corsair 33

Beam: 12'3"

Model Year: 2006

Draft: 3'0"

Boat Type: Cruiser

Weight: 13,200 lbs.

Standard Power: 2/280-hp Volvo Penta 5.7 Gi DuoProp gasoline stern drives

Optional Power: various gas and diesel stern drives from Volvo Penta and MerCruiser to 375 hp apiece

Fuel Capacity: 207 gal.

Water Capacity: 37 gal.



Subscribe to our **FREE e-newsletter!**



Stay up to date on all of our latest blogs and articles.

RHUMBLINE

[Click here to subscribe](#) ➤

BOATS

BOAT TESTS

Chris-Craft Corsair 33

By [Elizabeth Ginns Britten](#)



TEST BOAT SPECIFICATIONS

Test Engine: 2/375-hp Mercury T-496 gasoline Bravo Three stern drives

Props: 14x26 Mercury 3-blade s/s

Steering: Teleflex Sea Star hydraulic, w/ power-assist

Price as Tested: \$363,248

OPTIONAL EQUIPMENT ON TEST BOAT

Heritage package
Raymarine C80





Subscribe to our **FREE e-newsletter!**

POWER
& MOTORYACHT

Stay up to date on all of our
latest blogs and articles.

RHUMBLINE

Click here to subscribe ➤

BOATS

BOAT TESTS

Ocean 42 Super Sport

By [Capt. Bill Pike](#)



TEST BOAT SPECIFICATIONS

Test Engine: 2/510-mhp Caterpillar C9 diesel inboards

Transmission/Ratio: ZF 285A/1.96:1

Props: 26x36 4-blade nibrals

Steering: Hynautic hydraulic

Price as Tested: \$704,275



Subscribe to our **FREE** e-newsletter!



Stay up to date on all of our latest blogs and articles.

RHUMBLINE

[Click here to subscribe](#) ➤

BOATS

BOAT TESTS

Ocean 42 Super Sport

By [Capt. Bill Pike](#)



Boat Tests

SPECIFICATIONS

Builder: Ocean

LOA: 42'1"

Model: 42 Super Sport

Beam: 15'4"

Model Year: 2006

Draft: 3'11"

Boat Type: Sportfisherman

Weight: 34,151 lbs.

Standard Power: 2/510-mhp Caterpillar C9 diesel inboards

Optional Power: 2/575-mhp Caterpillar C9A or 2/715-mhp Caterpillar C12 diesel inboards

Fuel Capacity: 430 gal.

Water Capacity: 100 gal.



Subscribe to our **FREE** e-newsletter!



Stay up to date on all of our latest blogs and articles.

RHUMBLINE

[Click here to subscribe](#) ➤

BOATS

BOAT TESTS

Mainship 43 Trawler

By [Capt. Richard Thiel](#)



Boat Tests

SPECIFICATIONS

Builder: Mainship

Model: 43 Trawler

Model Year: 2006

Boat Type: Trawler

LOA: 47'9"

Beam: 15'6"

Draft: 3'8"

Weight: 40,000 lbs.

Standard Power: 2/370-hp Yanmar 6LYA-STP diesel V-drive inboards

Optional Power: 2/440-hp Yanmar 6LY2A-STP or 2/540-hp Cummins MerCruiser QSC8.3-540 diesel V-drive inboards

Fuel Capacity: 830 lbs.

Water Capacity: 200 lbs.



Subscribe to our **FREE e-newsletter!**

POWER
& MOTORYACHT

Stay up to date on all of our
latest blogs and articles.

RHUMBLINE

Click here to subscribe ➤

BOATS

BOAT TESTS

Mainship 43 Trawler

By [Capt. Richard Thiel](#)



TEST BOAT SPECIFICATIONS

Test Engine: 2/540-hp Cummins MerCruiser QSC8.3-540 diesel V-drive inboards

Transmission/Ratio: ZF V-drive/2.0:1

Props: 26x35 5-blade Nibral

Steering: Hynautic hydraulic

Price as Tested: \$686,797



Subscribe to our **FREE** e-newsletter!

POWER
& MOTORYACHT

Stay up to date on all of our
latest blogs and articles.

RHUMBLINE

Click here to subscribe ➤

BOATS

BOAT TESTS

Meridian 391

By [Jeffrey Moser](#)



Boat Tests

SPECIFICATIONS

Builder: Meridian

Model: 391

Model Year: 2006

Boat Type: Cruiser

LOA: 40'11"

Beam: 13'11"

Draft: 3'4"

Weight: 23,640 lbs.

Standard Power: 2/370-hp MerCruiser 8.1S Horizon gasoline inboards

Optional Power: 2/420-hp MerCruiser 8.1S H0 gasoline inboards; 2/330-hp Cummins QSB5.9 or 2/380-hp QSB5.9 diesel inboards

Fuel Capacity: 350 gal.

Water Capacity: 125 gal.



Subscribe to our **FREE e-newsletter!**

POWER
& MOTORYACHT

Stay up to date on all of our
latest blogs and articles.

RHUMBLINE

Click here to subscribe ➤

BOATS

BOAT TESTS

Meridian 391

By [Jeffrey Moser](#)



TEST BOAT SPECIFICATIONS

Test Engine: 2/380-hp Cummins QSB5.9 diesel inboards

Transmission/Ratio: ZF 80/1.96:1

Props: 23x26 4-blade nibral

Steering: Teleflex Sea Star hydraulic

Price as Tested: \$469,340



Subscribe to our **FREE** e-newsletter!



Stay up to date on all of our latest blogs and articles.

RHUMBLINE

[Click here to subscribe](#) ➤

BOATS

BOAT TESTS

Lazzara 84

By [Capt. Patrick Sciacca](#)



Boat Tests

SPECIFICATIONS

Builder: Lazzara

LOA: 85'2"

Model: 84

Beam: 20'1"

Model Year: 2006

Draft: 4'6"

Boat Type: Megayacht (> 80')

Weight: 135,000 lbs.

Standard Power: 2/1,550-hp Caterpillar C30 diesel inboards

Optional Power: none

Fuel Capacity: 2,000 gal.

Water Capacity: 400 gal.

STANDARD EQUIPMENT

American Bow Thruster ABT Trac stabilization system

SidePower bow thruster



Subscribe to our **FREE e-newsletter!**



Stay up to date on all of our latest blogs and articles.

RHUMBLINE

[Click here to subscribe](#) ➤

BOATS

BOAT TESTS

Lazzara 84

By [Capt. Patrick Sciacca](#)



TEST BOAT SPECIFICATIONS

Test Engine: 2/1,550-hp Caterpillar C30 diesel inboards

Transmission/Ratio: ZF 2050A/2.43:1

Props: 38x46 5-blade Rolla S-class

Steering: Jastr hydraulic w/ power-assist

Price as Tested: \$5,368,597



Subscribe to our **FREE** e-newsletter!



Stay up to date on all of our latest blogs and articles.

RHUMBLINE

[Click here to subscribe](#) ➤

BOATS

BOAT TESTS

Warren S87

By [Capt. Patrick Sciacca](#)



Boat Tests

SPECIFICATIONS

Builder: Warren

LOA: 86'6"

Model: S87

Beam: 19'5"

Model Year: 2006

Draft: 4'10"

Boat Type: Cruiser

Weight: 88,100 lbs.

Standard Power: 2/1,300-hp MAN D2842 LE 404 diesel inboards

Optional Power: various diesels from MAN or MTU up to 1,800 hp apiece with straight inboards or Arneson Surface Drives

Fuel Capacity: 1,850 gal.

Water Capacity: 396 gal.



Subscribe to our **FREE e-newsletter!**



Stay up to date on all of our latest blogs and articles.

RHUMBLINE

[Click here to subscribe](#) ➤

BOATS

BOAT TESTS

Warren S87

By [Capt. Patrick Sciacca](#)



TEST BOAT SPECIFICATIONS

Test Engine: 2/1,300-hp MAN D2842 LE 404 diesel inboards

Transmission/Ratio: ZF/2:1

Props: 34x39 5-blade Teignbridge Aquafoil 105 DAR

Steering: Hydraulic w/ power assist

Price as Tested: \$5.9 million



Subscribe to our **FREE e-newsletter!**

POWER
& MOTORYACHT

Stay up to date on all of our
latest blogs and articles.

RHUMBLINE

[Click here to subscribe ►](#)

BOATS

BOAT TESTS

Fairline Targa 40

By [Capt. Bill Pike](#)



Boat Tests

SPECIFICATIONS

Builder: Fairline

LOA: 41'10"

Model: Targa 40

Beam: 12'1"

Model Year: 2006

Draft: 3'0"

Boat Type: Cruiser

Weight: 17,800 lbs.

Standard Power: 2/303-bhp Volvo Penta D6-310/DP
diesel stern drives

Optional Power: 2/343-hp Volvo Penta D6-350/DP
diesel stern drives

Fuel Capacity: 164 gal.

Water Capacity: 79 gal.

STANDARD EQUIPMENT

Lewmar anchor windlass

Vetus garage winch



Subscribe to our **FREE e-newsletter!**

POWER
& MOTORYACHT

Stay up to date on all of our latest blogs and articles.

RHUMBLINE

[Click here to subscribe](#) ➤

BOATS

BOAT TESTS

Fairline Targa 40

By [Capt. Bill Pike](#)



TEST BOAT SPECIFICATIONS

Test Engine: 2/303-bhp Volvo Penta D6-310/DP diesel stern drives

Transmission/Ratio: Volvo Penta/1.76:1

Props: G6 DuoProps

Steering: Volvo Penta power-assisted hydraulic



Subscribe to our **FREE** e-newsletter!



Stay up to date on all of our latest blogs and articles.

RHUMBLINE

[Click here to subscribe](#) ➤

BOATS

BOAT TESTS

Ocean Alexander 98 Cockpit

By [Capt. Bill Pike](#)



Boat Tests

SPECIFICATIONS

Builder: Ocean Alexander

LOA: 101'0"

Model: 98 Cockpit Motoryacht

Beam: 22'0"

Model Year: 2006

Draft: 5'4"

Boat Type: Megayacht (> 80')

Weight: 224,000 lbs.

Standard Power: 2/1,500-hp MTU 12V 2000 M91 diesel inboards

Optional Power: 2/1,800-hp MTU 12V 2000, 2/1,502-hp MTU 10V 2000, or 2/1,652-hp Caterpillar C32 diesel inboards

Fuel Capacity: 4,000 gal.

Water Capacity: 600 gal.



Subscribe to our **FREE e-newsletter!**

POWER
& MOTORYACHT

Stay up to date on all of our
latest blogs and articles.

RHUMBLINE

Click here to subscribe ➤

BOATS

BOAT TESTS

Ocean Alexander 98 Cockpit

By [Capt. Bill Pike](#)



TEST BOAT SPECIFICATIONS

Test Engine: 2/1,500-hp MTU 12V 2000 M91 diesel inboards

Transmission/Ratio: ZF 2150 A/2.92:1

Props: 44x46 five-blade bronze Hung Shen

Steering: Kobelt w/ Key Power hydraulics

Price as Tested: \$6,745,000



Subscribe to our **FREE e-newsletter!**

POWER
& MOTORYACHT

Stay up to date on all of our
latest blogs and articles.

RHUMBLINE

[Click here to subscribe ►](#)

BOATS

BOAT TESTS

CRN Saramour

By [Diane M. Byrne](#)



Boat Tests

SPECIFICATIONS

Builder: CRN

LOA: 150'11"

Model: Saramour

Beam: 27'7"

Model Year: 2006

Draft: 7'10"

Boat Type: Megayacht (> 80')

Fuel Capacity: 15,800 gal.

Construction steel hull, aluminum superstructure

Water Capacity: 2,600 gal.

Classification Lloyds X 100-A1 SSC Yacht Mono
G6+LMC; MCA certificate

Engines 2/1,950-hp Caterpillar 3512 DITA diesel
engines

Gensets 2/125-kW and 1/55-kW Kohlers

Watermakers Idromar

Windlass MEP

Air Conditioning Condaria



Subscribe to our **FREE e-newsletter!**

POWER
& MOTORYACHT

Stay up to date on all of our
latest blogs and articles.

RHUMBLINE

Click here to subscribe ➤

BOATS

BOAT TESTS

CRN Saramour

By [Diane M. Byrne](#)



TEST BOAT SPECIFICATIONS

This article originally appeared in the January 2006 issue of *Power & Motoryacht* magazine.



Subscribe to our **FREE e-newsletter!**

POWER
& MOTORYACHT

Stay up to date on all of our
latest blogs and articles.

RHUMBLINE

[Click here to subscribe ►](#)

BOATS

BOAT TESTS

Beneteau Flyer 12

By [PMY Staff](#)



Boat Tests

SPECIFICATIONS

Builder: Beneteau

LOA: 41'4"

Model: Flyer 12

Beam: 13'1"

Model Year: 2006

Draft: 3'9"

Boat Type: Cruiser

Weight: 19,610 lbs.

Standard Power: 2/310-hp Volvo Penta IPS 400
diesel inboards

Optional Power: 2/370-hp Volvo Penta IPS 500,
2/310-hp Volvo Penta D6-310, or 2/370-hp Volvo
Penta D6-370 diesel inboards

Fuel Capacity: 317 gal.

Water Capacity: 84 gal.



Subscribe to our **FREE e-newsletter!**



Stay up to date on all of our latest blogs and articles.

RHUMBLINE

[Click here to subscribe](#) ➤

BOATS

BOAT TESTS

Beneteau Flyer 12

By [PMY Staff](#)



TEST BOAT SPECIFICATIONS

Test Engine: 2/310-hp Volvo Penta IPS 400 diesel inboards

Transmission/Ratio: Volvo Penta/1.94:1

Props: Volvo Penta IPS props

Steering: Volvo Penta hydraulic



Subscribe to our **FREE** e-newsletter!



Stay up to date on all of our latest blogs and articles.

RHUMBLINE

[Click here to subscribe](#) ➤

BOATS

BOAT TESTS

Huckins Atlantic 44

By [Jeffrey Moser](#)



Boat Tests

SPECIFICATIONS

Builder: Huckins

LOA: 44'10"

Model: Atlantic 44

Beam: 13'9"

Model Year: 2006

Draft: 3'0"

Boat Type: Cruiser

Weight: 22,933 lbs.

Optional Power: various diesel inboards from Cummins, Caterpillar, and Volvo Penta to 380 hp apiece

Fuel Capacity: 406 gal.

Water Capacity: 115 gal.

STANDARD EQUIPMENT

none (custom boat)

OPTIONAL EQUIPMENT

mahogany interior
Furuno NavNet, chartplotter, RD30 depthsounder, FM 3000 VHF
Simrad AP26 autopilot
Ritchie compass



Subscribe to our **FREE e-newsletter!**



Stay up to date on all of our latest blogs and articles.

RHUMBLINE

[Click here to subscribe](#) ➤

BOATS

BOAT TESTS

Huckins Atlantic 44

By [Jeffrey Moser](#)



TEST BOAT SPECIFICATIONS

Test Engine: 2/380-hp Cummins QSB5.9 380 diesel inboards

Transmission/Ratio: ZF/1.60:1

Props: 24x24 3-blade bronze

Steering: Hynautic hydraulic w/ power assist

Price as Tested: \$850,000

OPTIONAL EQUIPMENT ON TEST BOAT

mahogany interior

Furuno NavNet, chartplotter, RD30 depthsounder, FM 3000 VHF

Simrad AP26 autopilot

Ritchie compass

9.5-kW Northern Lights diesel genset



Subscribe to our **FREE** e-newsletter!

POWER
& MOTORYACHT

Stay up to date on all of our
latest blogs and articles.

RHUMBLINE

[Click here to subscribe ►](#)

BOATS

BOAT TESTS

Sea Ray 38 Sundancer

By [Elizabeth Ginns Britten](#)



Boat Tests

SPECIFICATIONS

Builder: Sea Ray

Model: 38 Sundancer

Model Year: 2006

Boat Type: Cruiser

LOA: 39'0"

Beam: 12'6"

Draft: 3'1"

Weight: 18,500 lbs.

Standard Power: 2/370-hp 8.1S Horizon MerCruiser
gasoline V-drive inboards

Optional Power: 2/420-hp 8.1S Horizon MerCruiser
gasoline V-drive or 2/306-hp 6LP-STP Yanmar diesel
V-drive inboards

Fuel Capacity: 250 gal.

Water Capacity: 55 gal.



Subscribe to our **FREE e-newsletter!**

POWER
& MOTORYACHT

Stay up to date on all of our
latest blogs and articles.

RHUMBLINE

Click here to subscribe ➤

BOATS

BOAT TESTS

Sea Ray 38 Sundancer

By [Elizabeth Ginns Britten](#)



TEST BOAT SPECIFICATIONS

Test Engine: 2/370-hp 8.1S Horizon MerCruiser gasoline V-drive inboards

Transmission/Ratio: ZF/2.50:1

Props: 21"x23" 4-blade Nibral

Steering: Sea Star hydraulic w/ power assist





Subscribe to our **FREE** e-newsletter!



Stay up to date on all of our latest blogs and articles.

RHUMBLINE

[Click here to subscribe](#) ►

BOATS

BOAT TESTS

Uniesse 53

By Jeffrey Moser



Boat Tests

SPECIFICATIONS

Builder: Uniesse

LOA: 53'6"

Boat Tests

SPECIFICATIONS

Builder: Uniesse

Model: 53

Model Year: 2005

Boat Type: Cruiser

LOA: 53'6"

Beam: 15'1"

Draft: 4'8"

Weight: 52,800 lbs.

Standard Power: 2/710-hp Caterpillar C12 diesel inboards

Optional Power: 2/730-hp MAN D2876 LE405, 2/1,015-hp Caterpillar C18, or 2/1,115-hp Caterpillar 3512B diesel inboards

Fuel Capacity: 634 gal.

Water Capacity: 159 gal.

STANDARD EQUIPMENT

BCS hydraulic steering
Maxwell 1500W windlass
Bruce anchor
Raymarine C80 GPS plotter, A12019 Sportpilot/Autopilot, DS400 transducer
Simrad Shipmate VHF
1,100-lb. Opacmare hydraulic davit, hydraulic passerelle
hot/cold transom shower
16-gal. water heater
3-burner Kenyon cooktop
2/ Sub-Zero drawer-style refrigerator and freezer
Haier microwave/convection oven
U-Line C029 'fridge/freezer
Bose Lifestyle 48 home theater system
30" Westinghouse LCD TV
Sony CDX-5500 w/ XM satellite radio
Jabsco searchlight

Subscribe to our **FREE** e-newsletter!

POWER
& MOTORYACHT

Stay up to date on all of our
latest blogs and articles.

RHUMBLINE

[Click here to subscribe](#) ►

BOATS

BOAT TESTS

Uniesse 53

By Jeffrey Moser



TEST BOAT SPECIFICATIONS

Test Engine: 2/710-hp Caterpillar C12 diesel inboards

Transmission/Ratio: ZF V -Drive/2:1

TEST BOAT SPECIFICATIONS

Test Engine: 2/710-hp Caterpillar C12 diesel inboards

Transmission/Ratio: ZF V -Drive/2:1

Props: 30x31 4-blade Nibral

Steering: BCS hydraulic w/ power assist

Price as Tested: \$1,442,483

OPTIONAL EQUIPMENT ON TEST BOAT

Max Power bow thruster

bimini top

Glendinning Cablemaster

Burmese teak sole in saloon and staterooms

Raritan ice maker and grill on flying bridge

13.5-kW Onan diesel genset

foredeck sunpad

This article originally appeared in the December 2005 issue of *Power & Motoryacht* magazine.





Subscribe to our **FREE e-newsletter!**



Stay up to date on all of our latest blogs and articles.

RHUMBLINE

[Click here to subscribe ►](#)

BOATS

BOAT TESTS

Carver 43

By [Jeffrey Moser](#)



Boat Tests

SPECIFICATIONS

Builder: Carver

LOA: 49'5"

Model: 43

Beam: 14'2"

Model Year: 2005

Draft: 3'6"

Boat Type: Cruiser

Weight: 35,811 lbs.

Standard Power: 2/375-hp Volvo Penta 8.1 GI gasoline inboards

Optional Power: 2/370-hp Volvo Penta D6-370 or 2/480-hp Yanmar 6LY3A-ETP diesel inboards

Fuel Capacity: 594 gal.

Water Capacity: 75 gal.

STANDARD EQUIPMENT

high-gloss cherry interior

Maxwell windlass w/ anchor and chain



Subscribe to our **FREE e-newsletter!**



Stay up to date on all of our latest blogs and articles.

RHUMBLINE

[Click here to subscribe](#) ➤

BOATS

BOAT TESTS

Carver 43

By [Jeffrey Moser](#)



TEST BOAT SPECIFICATIONS

Test Engine: 2/480-hp Yanmar 6LY3A-ETP diesel inboards

Transmission/Ratio: ZF280A/2.4:1

Props: 24x30 Acme 4-blade nibral

Steering: Teleflex SeaStar hydraulic w/ power assist



Subscribe to our **FREE e-newsletter!**



Stay up to date on all of our latest blogs and articles.

RHUMBLINE

[Click here to subscribe ►](#)

BOATS

BOAT TESTS

Silverton 45 Convertible

By [Capt. Patrick Sciacca](#)



Boat Tests

SPECIFICATIONS

Builder: Silverton

LOA: 47'8"

Model: 45 Convertible

Beam: 15'4"

Model Year: 2005

Draft: 3'9"

Boat Type: Cruiser

Weight: 33,000 lbs.

Standard Power: 2/500-hp Volvo Penta D9 diesel inboards

Optional Power: 2/533-hp Cummins QSC, 2/575-hp Volvo Penta D9 or 2/715-hp Volvo Penta D12 diesel inboards

Fuel Capacity: 612 gal.

Water Capacity: 120 gal.

STANDARD EQUIPMENT

EZ2CY front and Strataglass side enclosures on flying bridge
hardtop w/ spreader lights
Ultraleather settee and dinette seating
26" Sole retractable LCD TV in saloon
2/VacuFlush MSDs



Subscribe to our **FREE e-newsletter!**



Stay up to date on all of our latest blogs and articles.

RHUMBLINE

[Click here to subscribe](#) ➤

BOATS

BOAT TESTS

Silverton 45 Convertible

By [Capt. Patrick Sciacca](#)



TEST BOAT SPECIFICATIONS

Test Engine: 2/715-hp Volvo Penta D12 diesel inboards

Transmission/Ratio: ZF/1.73:1

Props: 26x35.5 5-blade Federal

Steering: Teleflex hydraulic

Price as Tested: \$798,890



Subscribe to our **FREE e-newsletter!**



Stay up to date on all of our latest blogs and articles.

RHUMBLINE

[Click here to subscribe](#) ➤

BOATS

BOAT TESTS

Island Pilot 395

By [Capt. Richard Thiel](#)



Boat Tests

SPECIFICATIONS

Builder: Island Pilot

LOA: 39'6"

Model:

Beam: 14'0"

Model Year: 2005

Draft: 3'2"

Boat Type: Cruiser

Weight: 30,000 lbs.

Standard Power: 2/350-hp Volvo Penta D-350
DuoProp diesel stern drives

Optional Power: none



Subscribe to our **FREE e-newsletter!**



Stay up to date on all of our latest blogs and articles.

RHUMBLINE

Click here to subscribe ➤

BOATS

BOAT TESTS

Island Pilot 395

By [Capt. Richard Thiel](#)



TEST BOAT SPECIFICATIONS

Test Engine: 2/350-hp Volvo Penta D-350 diesel stern drives

Transmission/Ratio: Duo Prop/1.69:1

Props: Volvo Penta G-4

Steering: Teleflex hydraulic

Price as Tested: \$439,500

OPTIONAL EQUIPMENT ON TEST BOAT

none



Subscribe to our **FREE** e-newsletter!

POWER
& MOTORYACHT

Stay up to date on all of our
latest blogs and articles.

RHUMBLINE

[Click here to subscribe ►](#)

BOATS

BOAT TESTS

Cruisers 385 Express

By [Capt. Bill Pike](#)



Boat Tests

SPECIFICATIONS

Builder: Cruisers Yachts

Model: 385 Express

Model Year: 2005

Boat Type: Cruiser

LOA: 42'2"

Beam: 13'8"

Draft: 3'3"

Weight: 21,000 lbs.

Standard Power: 2/370-hp 8.1S Horizon MerCruiser
gasoline inboards

Optional Power: gasoline and diesel inboards up to
420 hp apiece from MerCruiser, Volvo Penta, and
Yanmar

Fuel Capacity: 300 gal.

Water Capacity: 70 gal.



Subscribe to our **FREE e-newsletter!**

POWER
& MOTORYACHT

Stay up to date on all of our latest blogs and articles.

RHUMBLINE

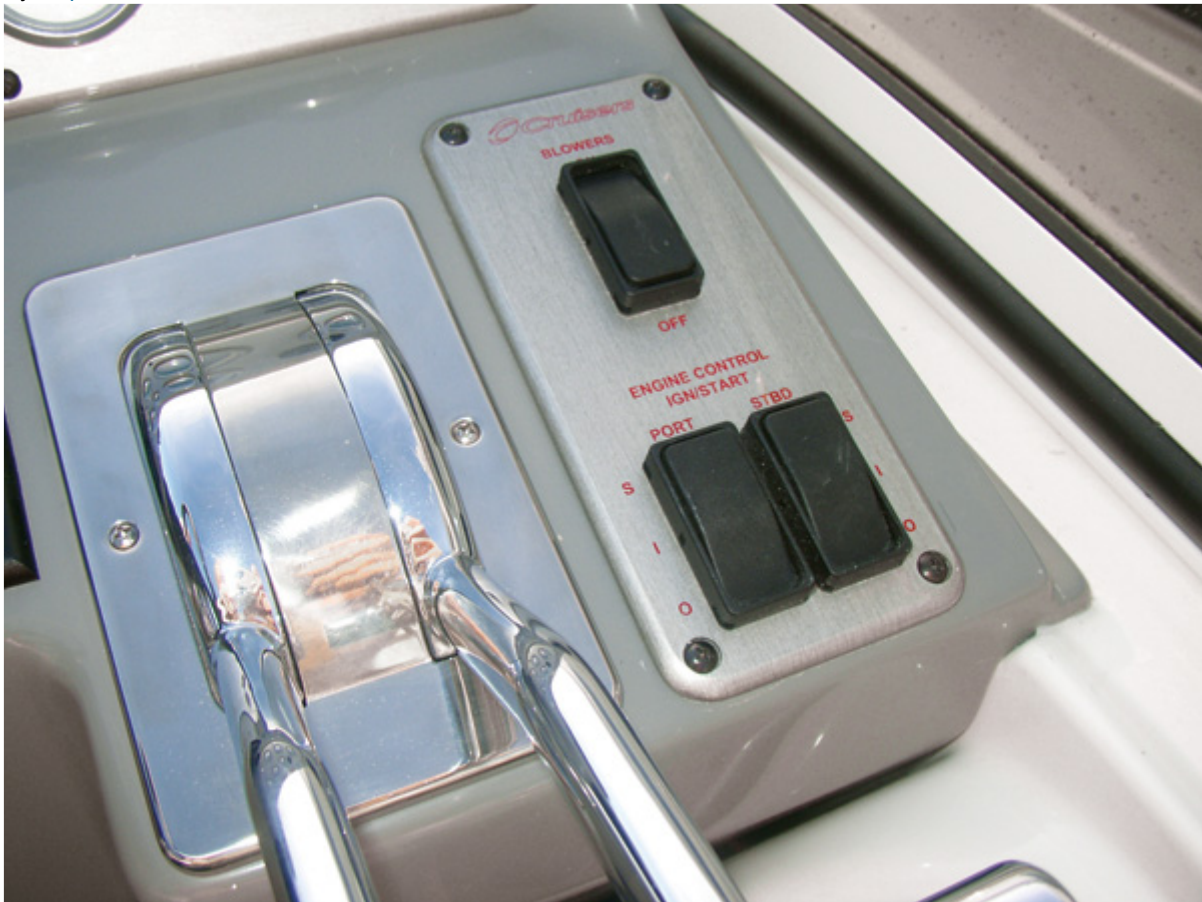
[Click here to subscribe](#) ➤

BOATS

BOAT TESTS

Cruisers 385 Express

By [Capt. Bill Pike](#)



TEST BOAT SPECIFICATIONS

Test Engine: 2/420-hp Volvo Penta 8.1 GXi gasoline inboards

Transmission/Ratio: ZF63A/2.5:1

Props: 22x25 4-blade bronze

Steering: Teleflex SeaStar hydraulic



Subscribe to our **FREE** e-newsletter!



Stay up to date on all of our latest blogs and articles.

RHUMBLINE

[Click here to subscribe ►](#)

BOATS

BOAT TESTS

Azimut 86S

By [Capt. Ken Kreisler](#)



Boat Tests

SPECIFICATIONS

Builder: Azimut

LOA: 88'6"

Model: 86S

Beam: 20'2"

Model Year: 2005

Draft: 4'2"

Boat Type: Megayacht (> 80')

Weight: 106,000 lbs.

Standard Power: 2,000-hp MTU 16V M91 diesel inboards

Optional Power: None except for choice of jet or Arneson drives

Fuel Capacity: 1,584 gal.

Water Capacity: 397 gal.

STANDARD EQUIPMENT

2/17.5-kW Kohler gensets
120,000-Btu Cruiseair tropical A/C w/ SMX controls
2/ Glendenning Cablemasters
trash compactor, central vac
oil-change system for mains and gensets



Subscribe to our **FREE e-newsletter!**



Stay up to date on all of our latest blogs and articles.

RHUMBLINE

Click here to subscribe ➤

BOATS

BOAT TESTS

Azimut 86S

By [Capt. Ken Kreisler](#)



TEST BOAT SPECIFICATIONS

Test Engine: 2,000-hp MTU 16V 2000 M91 diesel inboards

Transmission/Ratio: ZF/not avail.

Props: 6-blade nibrals

Steering: BCS hydraulic

Price as Tested: \$4,819,420



Subscribe to our **FREE** e-newsletter!



Stay up to date on all of our latest blogs and articles.

RHUMBLINE

[Click here to subscribe](#) ➤

BOATS

BOAT TESTS

Albin 40 North Sea Cutter

By [Capt. Bill Pike](#)



Boat Tests

SPECIFICATIONS

Builder: Albin

LOA: 39'6"

Model: 40 North Sea Cutter

Beam: 13'0"

Model Year: 2005

Draft: 4'0"

Boat Type: Down East

Weight: 25,000 lbs.

Standard Power: 2/315-hp Yanmar 6LYPA-STP diesel inboards

Optional Power: 2/370-hp Yanmar 6LY2A-STP, 2/440-hp Yanmar 6LPA-STP, or 2/380-hp Cummins MerCruiser QSB5.9 diesel inboards

Fuel Capacity: 500 gal.

Water Capacity: 200 gal.



Subscribe to our **FREE e-newsletter!**

POWER
& MOTORYACHT

Stay up to date on all of our
latest blogs and articles.

RHUMBLINE

Click here to subscribe ➤

BOATS

BOAT TESTS

Albin 40 North Sea Cutter

By [Capt. Bill Pike](#)



TEST BOAT SPECIFICATIONS

Test Engine: 2/370-hp Yanmar 6LY2A-STP diesel inboards

Transmission/Ratio: ZF 220A/2.5:1

Props: 261 / 2 x 247/16 4-blade nibrals

Steering: Teleflex SeaStar hydraulic

Price as Tested: \$364,020



Subscribe to our **FREE** e-newsletter!



Stay up to date on all of our latest blogs and articles.

RHUMBLINE

[Click here to subscribe](#) ➤

BOATS

BOAT TESTS

Aicon 72

By [Capt. Bill Pike](#)



Boat Tests

SPECIFICATIONS

Builder: Aicon

LOA: 75'6"

Model: 72

Beam: 17'4"

Model Year: 2005

Draft: 3'3"

Boat Type: Cruiser

Weight: 109,120 lbs.

Standard Power: 2/1,501 bhp MTU 12V 2000 diesel inboards

Optional Power: 2/1,550-bhp Caterpillar C30 diesel inboards

Fuel Capacity: 1,189 gal.

Water Capacity: 264 gal.



Subscribe to our **FREE e-newsletter!**



Stay up to date on all of our latest blogs and articles.

RHUMBLINE

[Click here to subscribe](#) ➤

BOATS

BOAT TESTS

Aicon 72

By [Capt. Bill Pike](#)



TEST BOAT SPECIFICATIONS

Test Engine: 2/1,550-bhp Caterpillar C30 diesel inboards

Transmission/Ratio: ZF 2050V/2.47:1

Props: 41x53 4-blade Radice

Steering: BCS hydraulic steering w/ two-engine power-assist

Price as Tested: 2.2 million euro (\$2,704,911 at presstime)



Subscribe to our **FREE** e-newsletter!

POWER
& MOTORYACHT

Stay up to date on all of our
latest blogs and articles.

RHUMBLINE

[Click here to subscribe](#) ➤

BOATS

BOAT TESTS

Jannace 430C

By [Capt. Richard Thiel](#)



Boat Tests

SPECIFICATIONS

Builder: Jannace

LOA: 43'0"

Model: 430C

Beam: 15'6"

Model Year: 2005

Draft: 4'0"

Boat Type: Sportfisherman

Weight: 33,000 lbs. (est.)

Standard Power: 2/700-hp Caterpillar C12 diesel
inboards

Optional Power: none

Fuel Capacity: 690 gal.

Water Capacity: 100 gal.

STANDARD EQUIPMENT

Maxwell windlass

4/Sub-Zero refrigerator/freezer drawers



Subscribe to our **FREE e-newsletter!**



Stay up to date on all of our latest blogs and articles.

RHUMBLINE

[Click here to subscribe](#) ➤

BOATS

BOAT TESTS

Jannace 430C

By [Capt. Richard Thiel](#)



TEST BOAT SPECIFICATIONS

Test Engine: 2/700-hp Caterpillar C12 diesel inboards

Transmission/Ratio: ZF3251A/1.485:1

Props: 26x29 1/2 4-blade Nibral

Steering: Hynautic power-assisted

Price as Tested: \$910,169



Subscribe to our **FREE e-newsletter!**

POWER
& MOTORYACHT

Stay up to date on all of our
latest blogs and articles.

RHUMBLINE

[Click here to subscribe ►](#)

BOATS

BOAT TESTS

Hatteras 64

By [PMY Staff](#)



Boat Tests

SPECIFICATIONS

Builder: Hatteras

LOA: 64'10"

Model: 64

Beam: 18'3"

Model Year: 2005

Draft: 4'8"

Boat Type: Cruiser

Weight: 103,824 lbs.

Standard Power: 2/ 1,000-hp Caterpillar C18 diesel inboards

Optional Power: Twin MTU and Caterpillar diesels to 1,550 hp each

Fuel Capacity: 1,515 gal.

Water Capacity: 265 gal.

STANDARD EQUIPMENT

high-gloss cherry interior
Maxwell windlass



Subscribe to our **FREE e-newsletter!**



Stay up to date on all of our latest blogs and articles.

RHUMBLINE

[Click here to subscribe](#) ➤

BOATS

BOAT TESTS

Hatteras 64

By [PMY Staff](#)



TEST BOAT SPECIFICATIONS

Test Engine: 2/1,400-hp Caterpillar 3412 E diesel inboards

Transmission/Ratio: ZF 2250/3.52:1

Props: 40x68 7-blade Nibral Michigan Wheel

Steering: SeaStar hydraulic w/ power assist



Subscribe to our **FREE** e-newsletter!

POWER
& MOTOR YACHT

Stay up to date on all of our latest blogs and articles.

RHUMBLINE

[Click here to subscribe](#) ➤

BOATS

BOAT TESTS

Egg Harbor 50

By [Capt. Patrick Sciacca](#)



TEST BOAT SPECIFICATIONS

Test Engine: 2/1,000-hp Caterpillar C18 diesel inboards

Transmission/Ratio: ZF/1.75:1

Props: 250 gal.

Steering: Teleflex hydraulic w/ power-assist



Boat Tests

SPECIFICATIONS

Builder: Egg Harbor

Model: 50

Model Year: 2005

Boat Type: Sportfisherman

LOA: 50'0"

Beam: 16'11"

Draft: 4'0"

Weight: 52,000 lbs.

Standard Power: 2/700-hp Caterpillar C12 diesel inboards

Optional Power: 2/1,000-hp Caterpillar C18 diesel inboards

Fuel Capacity: 1,050 gal.

Water Capacity: 250 gal.

STANDARD EQUIPMENT

dripless shaft logs
single-lever Glendinning controls
Racor fuel-water separators
15-kW Westerbeke genset
Teleflex power-assist steering
Glendinning Cablemaster
in-deck fishbox w/ macerator
livewell
4/rod holders
tuna door
Cruisair reverse-cycle A/C (4 zones)



Subscribe to our **FREE** e-newsletter!



Stay up to date on all of our latest blogs and articles.

RHUMBLINE

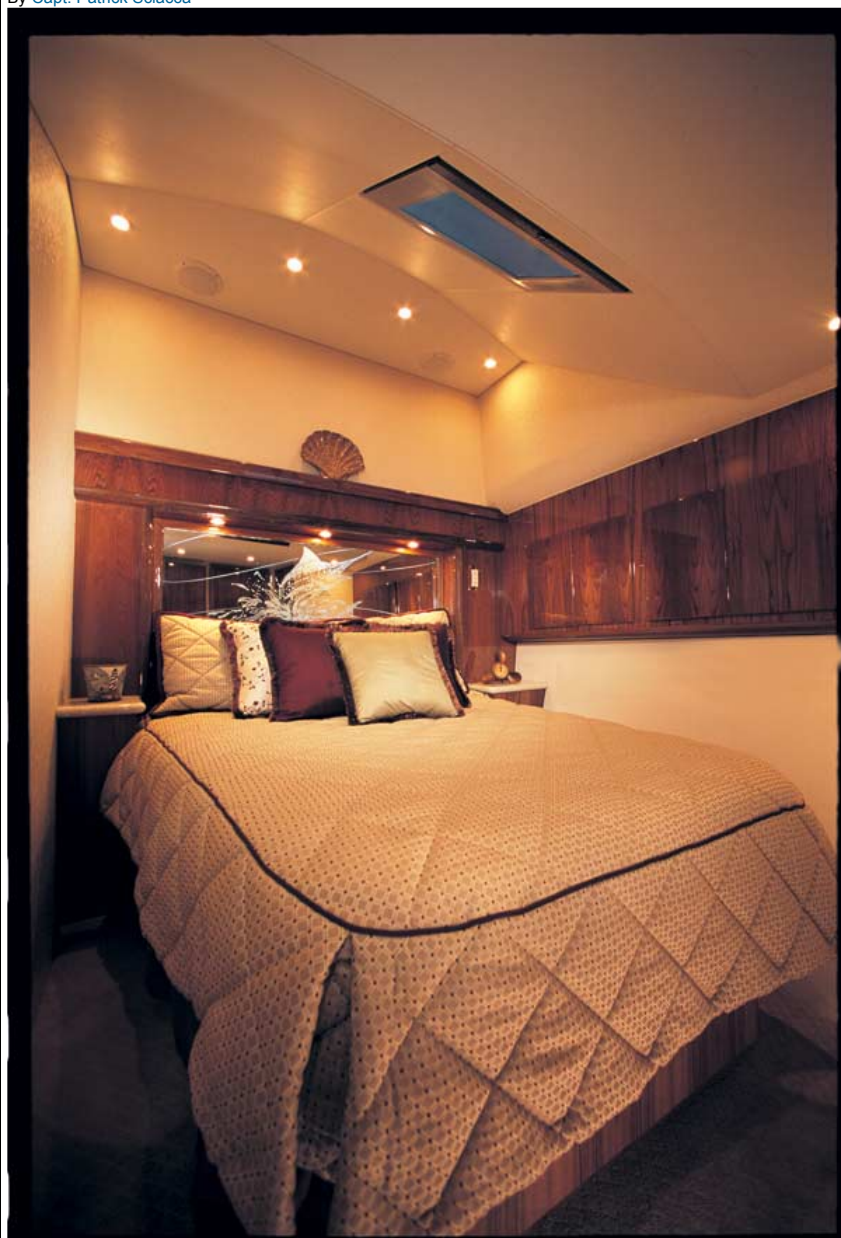
[Click here to subscribe](#) ➤

BOATS

BOAT TESTS

Egg Harbor 50

By [Capt. Patrick Sciacca](#)



Boat Tests

SPECIFICATIONS

Builder: Egg Harbor

LOA: 50'0"

Model: 50

Beam: 16'11"

Model Year: 2005

Draft: 4'0"



TEST BOAT SPECIFICATIONS

Test Engine: 2/1,000-hp Caterpillar C18 diesel inboards

Transmission/Ratio: ZF/1.75:1

Props: 250 gal.

Steering: Teleflex hydraulic w/ power-assist

Price as Tested: \$1,273,000

OPTIONAL EQUIPMENT ON TEST BOAT

double-spreader Rupp outriggers
4/wing rod holders
4/swivel-mount rod holders
covering boards
2/Xenon underwater lights
2/flush-mount teaser reels
Eskimo ice maker
20" Sole flat-panel TV in master
additional Rule bilge pump aft
teak helm pod
Murray Brothers fighting chair
electronics package w/ Northstar 958 GPS
Furuno NavNet
Simrad AP26 autopilot
2/Icom IC-M602 VHF's

This article originally appeared in the November 2005 issue of *Power & Motoryacht* magazine.



Subscribe to our **FREE** e-newsletter!

POWER
& MOTORYACHT

Stay up to date on all of our latest blogs and articles.

RHUMBLINE

[Click here to subscribe](#) ➤

BOATS

BOAT TESTS

Fairline Targa 47

By [Capt. Bill Pike](#)



Boat Tests

SPECIFICATIONS

Builder: Fairline

LOA: 48'6"

Model: Targa 47

Beam: 13'1"

Model Year: 2005

Draft: 3'6"

Boat Type: Cruiser

Weight: (half load) 23,560 lbs.

Standard Power: 2/500-mhp Volvo Penta D9-500 diesel inboards



Subscribe to our **FREE e-newsletter!**



Stay up to date on all of our latest blogs and articles.

RHUMBLINE

[Click here to subscribe](#) ➤

BOATS

BOAT TESTS

Fairline Targa 47

By [Capt. Bill Pike](#)



TEST BOAT SPECIFICATIONS

Test Engine: 2/480-mhp Volvo Penta 75P EDC diesel inboards

Transmission/Ratio: ZF 280-1A/1.77:1

Props: 24x32 4-blade nibrals

Steering: Teleflex Sea-Star hydraulic w/ starboard-engine-driven power-assist

Price as Tested: \$909,000

Optional Power: 2/480-mhp Volvo Penta 75P EDC, 2/500-mhp Volvo Penta D9-500, or 2/575-mhp Volvo Penta D9-575 diesel inboards; 2/510-mhp Caterpillar C9 diesel inboards

Fuel Capacity: 304 gal.

Water Capacity: 80 gal.

STANDARD EQUIPMENT

Side-Power bow thruster
ITT Jabsco spotlight
Wema tank gauge
VDO instrumentation
AutoAnchor 500RCX controller/chain counter
Raymarine Ray240E VHF and Tridata ST60
Trend Marine opening ports
Isotherm refrigerator
EuroKera 2-burner cooktop
Sharp Jet Convection & Double Grill microwave oven
2/VacuFlush MSDs
Bose Entertainment System
Sharp TV
JVC AM/FM/stereo/CD player
2/Plastimo 925 manual bilge pumps
Sea-Fire FM-200 auto. fire-extinguishing system
24,000-Btu Marine Air A/C
11.5-kW Onan genset
Lenco electric trim tabs

OPTIONAL EQUIPMENT

Raymarine SmartPilot ST6001 autopilot
C80 radar/GPS/plotter
16,00-Btu Marine Air cockpit A/C
Besenzone passerelle
DeDietrich BBQ
PWC garage w/ roller assembly and winch

This article originally appeared in the October 2005 issue of *Power & Motoryacht* magazine.



BoatQuest.com

PassageMaker

POWER
MOTOR yacht

AL

SHOW
BOAT SHOWS

SOUNDINGS

Trade Only

YACHTS

Subscribe to our **FREE** e-newsletter!



Stay up to date on all of our latest blogs and articles.

RHUMBLINE

[Click here to subscribe](#) ➤

BOATS

BOAT TESTS

Cruisers 477 Sport Sedan

By [Capt. Patrick Sciacca](#)



Boat Tests

SPECIFICATIONS

Builder: Cruisers Yachts

LOA: 50'3"

Model: 477 Sport Sedan

Beam: 15'0"

Model Year: 2005

Draft: 4'1"

Boat Type: Cruiser

Weight: 36,500 lbs.

Standard Power: 2/500-hp Volvo Penta D9 diesel inboards

Optional Power: 2/575-hp Volvo Penta D9 diesel inboards

Fuel Capacity: 526 gal.

Water Capacity: 150 gal.



Subscribe to our **FREE e-newsletter!**



Stay up to date on all of our latest blogs and articles.

RHUMBLINE

[Click here to subscribe](#) ➤

BOATS

BOAT TESTS

Cruisers 477 Sport Sedan

By [Capt. Patrick Sciacca](#)



TEST BOAT SPECIFICATIONS

Test Engine: 2/575-hp Volvo Penta D9 diesel inboards

Transmission/Ratio: Twin Disc MG5075 V-drives/1.99:1

Props: 26x34 4-blade Nibral

Steering: Sea Star hydraulic

Price as Tested: \$924,890



Subscribe to our **FREE** e-newsletter!



Stay up to date on all of our latest blogs and articles.

RHUMBLINE

[Click here to subscribe](#) ➤

BOATS

BOAT TESTS

Birchwood 350

By [Elizabeth Ginns Britten](#)



Boat Tests

SPECIFICATIONS

Builder: Birchwood

Model: 350

Model Year: 2005

Boat Type: Cruiser

LOA: 36'6"

Beam: 11'4"

Draft: 2'0"

Weight: 14,330 lbs.

Optional Power: various diesel stern drive options from MerCruiser and Volvo Penta up to 300 hp each

Fuel Capacity: 150 gal.

Water Capacity: 50 gal.



Subscribe to our **FREE e-newsletter!**

POWER
& MOTORYACHT

Stay up to date on all of our
latest blogs and articles.

RHUMBLINE

Click here to subscribe ➤

BOATS

BOAT TESTS

Birchwood 350

By [Elizabeth Ginns Britten](#)



TEST BOAT SPECIFICATIONS

Test Engine: 2/ 285-hp Volvo Penta KAD 300/DP stern drives

Transmission/Ratio: Volvo Penta DP-G/1.68:1

Props: Volvo Penta C5 DuoProp

Steering: Sea Star hydraulic power-assisted

Price as Tested: not available



Subscribe to our **FREE** e-newsletter!

POWER
& MOTORYACHT

Stay up to date on all of our latest blogs and articles.

RHUMBLINE

[Click here to subscribe](#) ➤

BOATS

BOAT TESTS

ACY 72

By [Jeffrey Moser](#)



Boat Tests

SPECIFICATIONS

Builder: ACY

Model:

Model Year: 2005

Boat Type: Sportfisherman

LOA: 72'6"

Beam: 20'6"

Draft: 5'9"

Weight: 110,000 lbs.

Optional Power: various diesel inboards to 2/ 2,400-hp

Fuel Capacity: 3,000 gal.

Water Capacity: 350 gal.



Subscribe to our **FREE e-newsletter!**



Stay up to date on all of our latest blogs and articles.

RHUMBLINE

[Click here to subscribe](#) ➤

BOATS

BOAT TESTS

ACY 72

By [Jeffrey Moser](#)



TEST BOAT SPECIFICATIONS

Test Engine: 2/ 2,000-hp MTU 16V 2000 M91 diesel inboards

Transmission/Ratio: ZF 255A/2.03:1

Props: 41"x48" 6-blade SoftCav

Steering: Hynautic hydraulic w/ power assist

Price as Tested: not available



Subscribe to our **FREE** e-newsletter!



Stay up to date on all of our latest blogs and articles.

RHUMBLINE

[Click here to subscribe](#) ➤

BOATS

BOAT TESTS

Cavileer 44 Convertible

By [Jeffrey Moser](#)



Boat Tests

SPECIFICATIONS

Builder: Cavileer

Model: 44 Convertible

Model Year: 2005

Boat Type: Sportfisherman

LOA: 44'5"

Beam: 16'0"

Draft: 3'3"

Weight: 44,000 lbs.

Standard Power: 2/715-hp Caterpillar C12 diesel inboards

Optional Power: 2/825-hp MTU Series 60, 2/830-mhp Caterpillar C15, or 2/1,015-hp Caterpillar C18 diesel inboards

Fuel Capacity: 730 gal.

Water Capacity: 120 gal.



Subscribe to our **FREE e-newsletter!**



Stay up to date on all of our latest blogs and articles.

RHUMBLINE

[Click here to subscribe](#) ➤

BOATS

BOAT TESTS

Cavileer 44 Convertible

By [Jeffrey Moser](#)



TEST BOAT SPECIFICATIONS

Test Engine: 2/715-hp Caterpillar C12 diesel inboards

Transmission/Ratio: ZF 325-1A/1.48:1

Props: 24x31 ZF 5-blade

Steering: Teleflex Sea-Star hydraulic w/power assist

Price as Tested: \$909,896



Subscribe to our **FREE e-newsletter!**

POWER
& MOTORYACHT

Stay up to date on all of our
latest blogs and articles.

RHUMBLINE

[Click here to subscribe](#) ➤

BOATS

BOAT TESTS

Viking Sport Cruisers 67 Motoryacht

By [Capt. Richard Thiel](#)



Boat Tests

SPECIFICATIONS

Builder: Viking Sport Cruisers

LOA: 67'1"

Model: 67 Motor Yacht

Beam: 17'2"

Model Year: 2005

Draft: 4'6"

Boat Type: Cruiser

Weight: 78,400 lbs.

Standard Power: 2/900-hp MAN V8-900CRM diesel inboards

Optional Power: 2/1,015-hp Caterpillar C18 diesel inboards

Fuel Capacity: 1,080 gal.

Water Capacity: 240 gal.

STANDARD EQUIPMENT

A/C

11-hp bow thruster

dripless shaft logs

oil-change system for engines, transmissions, and genset

27.5-kW Onan genset

cockpit shower

flying-bridge davit

rudder-angle indicator

wet bar

30-inch LCD TV in saloon

20" LCD TV in master

electric cooktop

U-shape dinette

Avonite countertops in galley and heads

ice maker

microwave

full-size single berths in port-side guest stateroom

washer/dryer combo

OPTIONAL EQUIPMENT

aft cabin w/ en suite head and 2/single berths

2/Glendinning Cablemasters

2/voltage-stabilizer transformers

air horns in lieu of electric horn

passerelle

foredeck sunpad cushions

luxury edition decor and accessory kit

windshield defogger

Bose home theater upgrade in saloon

2/15" LCD TVs in guest staterooms

Bose stereos in guest and crew's quarters

double-berth conversion in port guest stateroom

water delivery kit

washer and dryer

spare props

side boarding gates

Subscribe to our **FREE e-newsletter!**

POWER
& MOTORYACHT

Stay up to date on all of our
latest blogs and articles.

RHUMBLINE

[Click here to subscribe](#) ➤

BOATS

BOAT TESTS

Viking Sport Cruisers 67 Motoryacht

By [Capt. Richard Thiel](#)



TEST BOAT SPECIFICATIONS

Test Engine: 2/1,015-hp Caterpillar C18 diesel inboards

Transmission/Ratio: ZF 550/2:1

Props: 31x40 5-blade

Steering: Hypro hydraulic w/ power-assist

Price as Tested: \$2,956,740

OPTIONAL EQUIPMENT ON TEST BOAT

aft cabin w/ en suite head and 2/single berths
2/Glendinning Cablemasters
2/voltage-stabilizer transformers
air horns in lieu of electric horn
passerelle
foredeck sunpad cushions
luxury edition decor and accessory kit
windshield defogger
Bose home theater upgrade in saloon
2/15" LCD TVs in guest staterooms
Bose stereos in guest and crew's quarters
double-berth conversion in port guest stateroom
water delivery kit
washer and dryer
spare props
side boarding gates
electronics package w/ 2/12.1" Maptech i3 GPS/plotter/radar touch-screen displays
64-NM radar, autopilot, Furuno RD30 depth and speed log

This article originally appeared in the October 2005 issue of *Power & Motoryacht* magazine.

Win a wedding of a lifetime

One lucky couple will win the ultimate island wedding at the breathtaking Abaco Beach Resort in the Bahamas. For official rules of entry, please email weddingofalifetime@aimmedia.com

AIM MARINE GROUP  YACHTS  BoatQuest.com  PassageMaker  SOUNDINGS  Trade Only  AL  Angler's Journal  POWER



Subscribe to our **FREE** e-newsletter!



Stay up to date on all of our latest blogs and articles.

RHUMBLINE

[Click here to subscribe](#) ➤

BOATS

BOAT TESTS

Tiara 3900 Convertible

By [Capt. Patrick Sciacca](#)



Boat Tests

SPECIFICATIONS

Builder: Tiara

Model: 3900 Convertible

Model Year: 2005

Boat Type: Sportfisherman

LOA: 41'7" (w/ pulpit)

Beam: 14'5"

Draft: 3'8"

Weight: 26,560 lbs.

Standard Power: 2/540-hp Cummins QSC diesel inboards

Optional Power: 2/575-hp Volvo Penta D9 diesel inboards

Fuel Capacity: 470 gal.

Boat Tests

SPECIFICATIONS

Builder: Tiara

Model: 3900 Convertible

Model Year: 2005

Boat Type: Sportfisherman

LOA: 41'7" (w/ pulpit)

Beam: 14'5"

Draft: 3'8"

Weight: 26,560 lbs.

Standard Power: 2/540-hp Cummins QSC diesel inboards

Optional Power: 2/575-hp Volvo Penta D9 diesel inboards

Fuel Capacity: 470 gal.

Water Capacity: 120 gal.

STANDARD EQUIPMENT

Maxwell 800 windlass

bait-prep center w/ cutting board and tackle stowage

4/ rod holders

hardtop w/ spreader lights, enclosure, and 5/ rocket launchers

teak interior

teak sole

Ultraleather starboard saloon lounge w/ removable table

Ultraleather port lounge

double step-up berth in master

upper and lower bunks

26" Sharp Aquos LCD TV in saloon, 13" in master

Marine Air 16,000-Btu saloon and 12,000-Btu master A/C

NovaKool 5.5-cu.ft. refrigerator and 2.0-cu.-ft. freezer

Corian countertops

Panasonic microwave

VacuFlush MSD

Clarion AM/FM/stereo CD player w/ remote, amp, subwoofer, and 4 speakers

Subscribe to our **FREE** e-newsletter!

POWER
& MOTORYACHT

Stay up to date on all of our
latest blogs and articles.

RHUMBLINE

[Click here to subscribe](#) ►

BOATS

BOAT TESTS

Tiara 3900 Convertible

By [Capt. Patrick Sciacca](#)



TEST BOAT SPECIFICATIONS

Test Engine: 2/575-hp Volvo Penta D9 diesel inboards

Transmission/Ratio: Twin Disc 5065 AE/1.54:1

Props: 24x34 5-blade Michigan

TEST BOAT SPECIFICATIONS

Test Engine: 2/575-hp Volvo Penta D9 diesel inboards

Transmission/Ratio: Twin Disc 5065 AE/1.54:1

Props: 24x34 5-blade Michigan

Steering: Teleflex hydraulic w/ power-assist

Price as Tested: \$583,000

OPTIONAL EQUIPMENT ON TEST BOAT

teak-and-holly galley-saloon sole

Glendinning side-mount single-lever controls

colored hull

48-gal. in-transom livewell

30-ft. Rupp outriggers

bait-freezer

cruising-style flying-bridge ladder

macerator for in-deck fishboxes

Raymarine electronics package w/ 2/e120 displays, ST8001 autopilot, ST60 depthsounder, and 240 VHF

flying-bridge A/C

This article originally appeared in the September 2005 issue of *Power & Motoryacht* magazine.



Subscribe to our **FREE e-newsletter!**

POWER
& MOTORYACHT

Stay up to date on all of our latest blogs and articles.

RHUMBLINE

Click here to subscribe ➤

BOATS

BOAT TESTS

Mochi Maxidolphin 74

By [Alan Harper](#)



Boat Tests

SPECIFICATIONS

Builder: Mochi Craft

Model: Maxidolphin 74

Model Year: 2005

Boat Type: Cruiser

LOA: 74'0"

Beam: 22'6"

Draft: 5'3"

Weight: 106,263 lbs.

Standard Power: 2/1,522-hp MTU 12V 2000 M91 diesel inboards

Optional Power: not available

Fuel Capacity: 1,453 gal.



Subscribe to our **FREE e-newsletter!**

POWER
& MOTORYACHT

Stay up to date on all of our
latest blogs and articles.

RHUMBLINE

Click here to subscribe ➤

BOATS

BOAT TESTS

Mochi Maxidolphin 74

By [Alan Harper](#)



TEST BOAT SPECIFICATIONS

Transmission/Ratio: ZF 2050A/2.467:1

Props: 39x49 5-blade Teignbridge

Steering: BCS hydraulic

OPTIONAL EQUIPMENT ON TEST BOAT

none

This article originally appeared in the September 2005 issue of *Power & Motoryacht* magazine.



Subscribe to our **FREE** e-newsletter!

POWER
& MOTORYACHT

Stay up to date on all of our latest blogs and articles.

RHUMBLINE

Click here to subscribe ➤

BOATS

BOAT TESTS

Silverton 43 Sport Bridge

By [George L. Petrie](#)



Boat Tests

SPECIFICATIONS

Builder: Silverton

Model: 43 Sport Bridge

Model Year: 2005

Boat Type: Cruiser

LOA: 43'6"

Beam: 14'4"

Draft: 3'10"

Weight: 28,000 lbs.

Standard Power: 2/425-hp Crusader 8.1L MPI gasoline inboards

Optional Power: 2/355-hp Cummins 370B diesel inboards; 2/465-hp Cummins 480C-E diesel inboards; 2/440-hp Yanmar 6LY2A-STP diesel inboards; or



Subscribe to our **FREE** e-newsletter!



Stay up to date on all of our latest blogs and articles.

RHUMBLINE

[Click here to subscribe](#) ➤

BOATS

BOAT TESTS

Silverton 43 Sport Bridge

By [George L. Petrie](#)



TEST BOAT SPECIFICATIONS

Test Engine: 2/480-hp Volvo Penta TAMD-75 PEDC diesel inboards

Transmission/Ratio: ZF/2.00:1

Props: Feceral 32x26 4-blade nibral

Steering: Teleflex Sea Star hydraulic

Price as Tested: \$560,140



Subscribe to our **FREE** e-newsletter!



Stay up to date on all of our latest blogs and articles.

RHUMBLINE

[Click here to subscribe](#) ➤

BOATS

BOAT TESTS

Kit Cats PowerCat 40

By [Capt. Bill Pike](#)



Boat Tests

SPECIFICATIONS

Builder: Kit Cats

LOA: 40'0"

Model:

Beam: 19'6"

Model Year: 2005

Draft: 1'10"

Boat Type: Catamaran

Weight: 11,000 lbs.

Standard Power: 2/140-hp Suzuki DF140 four-stroke gasoline outboards

Optional Power: twin gasoline outboards or diesel inboards to a total of 350 hp apiece



Subscribe to our **FREE e-newsletter!**



Stay up to date on all of our latest blogs and articles.

RHUMBLINE

[Click here to subscribe](#) ➤

BOATS

BOAT TESTS

Kit Cats PowerCat 40

By [Capt. Bill Pike](#)



TEST BOAT SPECIFICATIONS

Test Engine: 2/140-hp Suzuki DF140 four-stroke gasoline outboards

Transmission/Ratio: Suzuki/2.38:1

Props: 14x16 aluminum 3-blade

Steering: Teleflex SeaStar hydraulic

Price as Tested: \$275,000



Subscribe to our **FREE** e-newsletter!



Stay up to date on all of our latest blogs and articles.

RHUMBLINE

[Click here to subscribe](#) ➤

BOATS

BOAT TESTS

Grand Banks 70 Aleutian CP

By [Capt. Bill Pike](#)



Boat Tests

SPECIFICATIONS

Builder: Grand Banks

Model: 70 Aleutian CP

Model Year: 2005

Boat Type: Cruiser

LOA: 75'0"

Beam: 19'10"

Draft: 5'6"

Weight: 117,000 lbs.

Standard Power: 2/1,001-hp Caterpillar C18 diesel inboards

Optional Power: 2/1,550-hp Caterpillar C30 diesel inboards

Fuel Capacity: 2,625 gal.

Water Capacity: 350 gal.



Subscribe to our FREE e-newsletter!



Stay up to date on all of our latest blogs and articles.

RHUMBLINE

[Click here to subscribe](#) ➤

BOATS

BOAT TESTS

Grand Banks 70 Aleutian CP

By [Capt. Bill Pike](#)



TEST BOAT SPECIFICATIONS

Test Engine: 2/1,550-hp Caterpillar C30 diesel inboards

Transmission/Ratio: Twin Disc MG-6557-00-A/2.48:1

Props: 42x43.6 nibral 5-blade Faster Propulsion

Steering: Teleflex Sea Star hydraulic w/ power assist

Price as Tested: \$2,997,000



Subscribe to our **FREE** e-newsletter!

POWER
& MOTORYACHT

Stay up to date on all of our
latest blogs and articles.

RHUMBLINE

[Click here to subscribe](#) ➤

BOATS

BOAT TESTS

Post 53 Convertible

By [Jeffrey Moser](#)



© 2004 Forest Johnson

Boat Tests

SPECIFICATIONS

Builder: Post

LOA: 52'10"

Model: 53 Convertible

Beam: 16'11"

Model Year: 2005

Draft: 5'0"

Boat Type: Sportfisherman

Weight: 59,000 lbs. est

Standard Power: 2/1,200-hp MTU 8V 2000 diesel inboards

Optional Power: 2/1,015-hp Caterpillar C18, 2/1,200-hp MAN 12V D2842 LE407, or 2/825-hp MTU Series 60 diesel inboards

Fuel Capacity: 926 gal.

Water Capacity: 240 gal.



Subscribe to our **FREE e-newsletter!**

POWER
& MOTORYACHT

Stay up to date on all of our
latest blogs and articles.

RHUMBLINE

Click here to subscribe ➤

BOATS

BOAT TESTS

Post 53 Convertible

By [Jeffrey Moser](#)



© 2004 Forest Johnson

TEST BOAT SPECIFICATIONS

Test Engine: 2/1,200-hp MTU 8V 2000 diesel inboards

Transmission/Ratio: ZF 550A/1.97:1

Props: 32x43 nibrals 4-blade

Steering: Teleflex Sea-Star hydraulic w/ power assist

Price as Tested: \$1,507,110



Subscribe to our **FREE** e-newsletter!

POWER
& MOTORYACHT

Stay up to date on all of our latest blogs and articles.

RHUMBLINE

[Click here to subscribe](#) ➤

BOATS

BOAT TESTS

Cabo 32 Express

By [Capt. Bill Pike](#)



TEST BOAT SPECIFICATIONS

Test Engine: 2/455-hp Caterpillar C7 diesel inboards

Transmission/Ratio: ZF280-1A/1.48:1

Props: 22x24 nibral 4-blade

Steering: Hynautic hydraulic w/ power-assist

Price as Tested: \$419,000



Subscribe to our **FREE** e-newsletter!

POWER
& MOTORYACHT

Stay up to date on all of our
latest blogs and articles.

RHUMBLINE

[Click here to subscribe](#) ➤

BOATS

BOAT TESTS

Cabo 32 Express

By [Capt. Bill Pike](#)



Boat Tests

SPECIFICATIONS

Builder: Cabo Yachts

LOA: 35'0"

Model: 32 Express

Beam: 13'3"

Model Year: 2005

Draft: 5'3"

Boat Type: Sportfisherman

Weight: 19,100 lbs.

Standard Power: 2/455-hp Caterpillar C7 diesel
inboards

Optional Power: none

Fuel Capacity: 350 gal.

Water Capacity: 50 gal.



Subscribe to our **FREE e-newsletter!**



Stay up to date on all of our latest blogs and articles.

RHUMBLINE

[Click here to subscribe](#) ➤

BOATS

BOAT TESTS

Grady White 360 Express

By [Capt. Patrick Sciacca](#)



Boat Tests

SPECIFICATIONS

Builder: Grady-White

LOA: 39'7"

Model: 360 Express

Beam: 13'3"

Model Year: 2005

Draft: 2'5"

Boat Type: Sportfisherman

Weight: 14,500 lbs.

Standard Power: 3/250-hp Yamaha four-stroke gasoline outboards

Optional Power: none

Fuel Capacity: 370 gal.

Water Capacity: 60 gal.



Subscribe to our **FREE e-newsletter!**

POWER
& MOTORYACHT

Stay up to date on all of our
latest blogs and articles.

RHUMBLINE

Click here to subscribe ➤

BOATS

BOAT TESTS

Grady White 360 Express

By [Capt. Patrick Sciacca](#)



TEST BOAT SPECIFICATIONS

Test Engine: 3/250-hp Yamaha four-stroke gasoline outboards

Props: 151/2x17 3-blade SWS II

Steering: SeaStar hydraulic w/ power-assist

Price as Tested: \$391,725 (w/o electronics)

OPTIONAL EQUIPMENT ON TEST BOAT

Release cockpit bolster

24-foot Lee outriggers

Furuno NavNet electronics package

This article originally appeared in the August 2005 issue of *Power & Motoryacht* magazine.



Subscribe to our **FREE e-newsletter!**

POWER
& MOTORYACHT

Stay up to date on all of our
latest blogs and articles.

RHUMBLINE

Click here to subscribe ➤

BOATS

BOAT TESTS

Apreamare 16m

By [Alan Harper](#)



Boat Tests

SPECIFICATIONS

Builder: Apreamare

LOA: 58'9"

Model:

Beam: 18'5"

Model Year: 2005

Draft: 4'7"

Boat Type: Cruiser

Weight: 55,115 lbs.

Standard Power: 2/800-hp Caterpillar diesel inboards

Optional Power: 2/900-hp MAN or 2/800hp MAN

Fuel Capacity: 792 gal.

Water Capacity: 264 gal.



Subscribe to our **FREE e-newsletter!**

POWER
& MOTORYACHT

Stay up to date on all of our
latest blogs and articles.

RHUMBLINE

Click here to subscribe ➤

BOATS

BOAT TESTS

Apreamare 16m

By [Alan Harper](#)



TEST BOAT SPECIFICATIONS

Test Engine: 2/900-hp MAN V8 900 CR diesel inboards

Transmission/Ratio: ZF 350 I V-drive; 2.03:1

Props: 4-blade Nibral

Steering: BCS hydraulic

Price as Tested: not available



Subscribe to our **FREE** e-newsletter!



Stay up to date on all of our latest blogs and articles.

RHUMBLINE

[Click here to subscribe](#) ➤

BOATS

BOAT TESTS

Buccaneer 95

By [Capt. Patrick Sciacca](#)



Boat Tests

SPECIFICATIONS

Builder: Buccaneer

LOA: 94'6"

Model: 95

Beam: 23'5"

Model Year: 2005

Draft: 7'2"

Boat Type: Megayacht (> 80')

Weight: 390,000 lbs.

Standard Power: 2/440-hp Caterpillar 3406C B-rated diesel inboards

Optional Power: none

Fuel Capacity: 16,000 gal.

Water Capacity: 1,350 gal.

STANDARD EQUIPMENT

teak cockpit, steps, swim platform

Max Q watermaker



Subscribe to our **FREE e-newsletter!**



Stay up to date on all of our latest blogs and articles.

RHUMBLINE

[Click here to subscribe](#) ➤

BOATS

BOAT TESTS

Buccaneer 95

By [Capt. Patrick Sciacca](#)



TEST BOAT SPECIFICATIONS

Test Engine: 2/440-hp Caterpillar 3406C B-rated diesel inboards

Transmission/Ratio: ZF/3.5:1

Props: 43x35 5-blade bronze

Steering: Kobelt hydraulic

Price as Tested: \$5.8 million



Subscribe to our **FREE** e-newsletter!



Stay up to date on all of our latest blogs and articles.

RHUMBLINE

[Click here to subscribe](#) ➤

BOATS

BOAT TESTS

Viking Sport Cruisers V70 Express

By [Capt. Richard Thiel](#)



Boat Tests

SPECIFICATIONS

Builder: Viking Sport Cruisers

LOA: 70'2"

Model: V70 Express

Beam: 16'11"

Model Year: 2005

Draft: 4'6"

Boat Type: Cruiser

Weight: 79,520 lbs.

Standard Power: 2/1,360-bhp MAN V12-1360-CR diesel inboards

Optional Power: 2/1,675-bhp Caterpillar C32 diesel inboards



Subscribe to our **FREE e-newsletter!**



Stay up to date on all of our latest blogs and articles.

RHUMBLINE

[Click here to subscribe](#) ➤

BOATS

BOAT TESTS

Viking Sport Cruisers V70 Express

By [Capt. Richard Thiel](#)



TEST BOAT SPECIFICATIONS

Test Engine: 2/1,675-bhp Caterpillar C32 diesel inboards

Transmission/Ratio: ZF 2060/2.03:1

Props: 33x53 5-blade APS

Steering: power-assisted

Price as Tested: not available



Subscribe to our **FREE** e-newsletter!

POWER
& MOTORYACHT

Stay up to date on all of our latest blogs and articles.

RHUMBLINE

Click here to subscribe ➤

BOATS

BOAT TESTS

Jefferson 52 Pilothouse SE

By [Capt. Bill Pike](#)



Boat Tests

SPECIFICATIONS

Builder: Jefferson

Model: 52 Pilothouse SE

Model Year: 2005

Boat Type: Cruiser

LOA: 51'7"

Beam: 15'0"

Draft: 4'0"

Weight: 37,700 lbs.

Standard Power: 2/460-hp Cummins MerCruiser
480C-E diesel inboards

Optional Power: 2/533-hp Cummins MerCruiser QSC
8.3 diesel inboards



Subscribe to our **FREE e-newsletter!**



Stay up to date on all of our latest blogs and articles.

RHUMBLINE

[Click here to subscribe](#) ➤

BOATS

BOAT TESTS

Jefferson 52 Pilothouse SE

By [Capt. Bill Pike](#)



TEST BOAT SPECIFICATIONS

Test Engine: 2/460-hp Cummins MerCruiser 480C-E diesel inboards

Transmission/Ratio: ZF280-1A/2.0:1

Props: 27x26 4-blade Hung Shen bronze

Steering: Capilano hydraulic



Subscribe to our **FREE** e-newsletter!



Stay up to date on all of our latest blogs and articles.

RHUMBLINE

[Click here to subscribe](#) ➤

BOATS

BOAT TESTS

Ocean 73 Super Sport

By [Capt. Ken Kreisler](#)



Boat Tests

SPECIFICATIONS

Builder: Ocean

Model: 73 Super Sport

Model Year: 2005

Boat Type: Sportfisherman

LOA: 72'6"

Beam: 19'8"

Draft: 5'0"

Weight: 129,223 lbs.

Standard Power: 1,570-metric hp Caterpillar C30 diesel inboards

Optional Power: 2/1,825-metric hp Caterpillar C32A or 2/1,675-metric hp Caterpillar C32 diesel inboards; 2/2,000-hp MTU 16V 2000 or 2/1,800-hp MTU 16V 2000 diesel inboards



Subscribe to our **FREE e-newsletter!**



Stay up to date on all of our latest blogs and articles.

RHUMBLINE

[Click here to subscribe](#) ➤

BOATS

BOAT TESTS

Ocean 73 Super Sport

By [Capt. Ken Kreisler](#)



TEST BOAT SPECIFICATIONS

Test Engine: 2/1,675-metric hp Caterpillar C32 diesel inboards

Transmission/Ratio: ZF/ 2.75:1

Props: 41x60 Veem 5-blade

Steering: Hynautic hydraulic

Price as Tested: \$3,245,636



Subscribe to our **FREE e-newsletter!**

POWER
& MOTORYACHT

Stay up to date on all of our
latest blogs and articles.

RHUMBLINE

[Click here to subscribe ►](#)

BOATS

BOAT TESTS

Marlow Marine Prowler 375

By [Capt. Bill Pike](#)



Boat Tests

SPECIFICATIONS

Builder: Marlow

LOA: 37'6"

Model: Marine Prowler 375

Beam: 12'0"

Model Year: 2005

Draft: 2'3"

Boat Type: Cruiser

Weight: 16,000 lbs.

Standard Power: 2/315-hp Yanmar 6LPA-STP diesel inboards

Optional Power: 2/359-hp Yanmar 6LYA-STP, 2/440-hp Yanmar 6LY2A-STP, 2/500-hp Yanmar 6CXM-GTE diesel inboards

Fuel Capacity: 350 gal.

Water Capacity: 80 gal.

STANDARD EQUIPMENT

Maxwell rope/chain windlass

Manship coachroof hatches and foredeck hatch



Subscribe to our **FREE e-newsletter!**

POWER
& MOTORYACHT

Stay up to date on all of our
latest blogs and articles.

RHUMBLINE

Click here to subscribe ➤

BOATS

BOAT TESTS

Marlow Marine Prowler 375

By [Capt. Bill Pike](#)



TEST BOAT SPECIFICATIONS

Test Engine: 2/359-hp 6LYA-STP diesel inboards

Transmission/Ratio: ZF80-IV/1.52:1

Props: 19 1/2x29 4-blade nibrals

Steering: Hynautic hydraulic



Subscribe to our **FREE** e-newsletter!



Stay up to date on all of our latest blogs and articles.

RHUMBLINE

[Click here to subscribe](#) ➤

BOATS

BOAT TESTS

Hunt Surfhunter 33

By [Capt. Richard Thiel](#)



Boat Tests

SPECIFICATIONS

Builder: Hunt

LOA: 33'0"

Model: Surfhunter 33

Beam: 11'4"

Model Year: 2005

Draft: 3'0"

Boat Type: Cruiser

Weight: 10,700 lbs.

Standard Power: 1/315-hp Yanmar 6LPA-STP diesel inboard

Optional Power: 1/370-hp Yanmar 6YLA-STP, 1/370-hp Volvo Penta D9-500, 1/380-hp Cummins QSB 380, or 1/480-hp Yanmar 6CXM-GTE diesel with inboard or waterjet drive

Fuel Capacity: 125 gal.

Water Capacity: 28 gal.



Subscribe to our **FREE e-newsletter!**

POWER
& MOTORYACHT

Stay up to date on all of our
latest blogs and articles.

RHUMBLINE

Click here to subscribe ➤

BOATS

BOAT TESTS

Hunt Surfhunter 33

By [Capt. Richard Thiel](#)



TEST BOAT SPECIFICATIONS

Test Engine: 1/380-hp Cummins QSB 5.9 380 diesel inboard

Transmission/Ratio: ZF220/2.04:1

Props: 21x29.9 5-blade nibral

Steering: Teleflex hydraulic

Price as Tested: \$311,045



Subscribe to our **FREE** e-newsletter!



Stay up to date on all of our latest blogs and articles.

RHUMBLINE

[Click here to subscribe](#) ➤

BOATS

BOAT TESTS

Henriques 42

By [Capt. Patrick Sciacca](#)



Boat Tests

SPECIFICATIONS

Builder: Integrity

LOA: 42'0"

Model: Henriques 42

Beam: 14'9"

Model Year: 2005

Draft: 3'7"

Boat Type: Sportfisherman

Weight: 38,000 lbs.

Standard Power: 2/700-hp Caterpillar C12 diesel inboards

Optional Power: 2/660-hp Cummins QSM11, 2/715-hp Volvo Penta D12, or 2/800-hp MAN D2848 LE 403 diesel inboards

Fuel Capacity: 660 gal.

Water Capacity: 120 gal.



Subscribe to our **FREE e-newsletter!**



Stay up to date on all of our latest blogs and articles.

RHUMBLINE

[Click here to subscribe](#) ➤

BOATS

BOAT TESTS

Henriques 42

By [Capt. Patrick Sciacca](#)



TEST BOAT SPECIFICATIONS

Test Engine: 2/700-hp Caterpillar C12 diesel inboards

Transmission/Ratio: ZF/1.9:1

Props: 28x36 4-blade # 9-cup HyTorq

Steering: SeaStar hydraulic

Price as Tested: \$742,585



Subscribe to our **FREE** e-newsletter!

POWER
& MOTORYACHT

Stay up to date on all of our latest blogs and articles.

RHUMBLINE

[Click here to subscribe ►](#)

BOATS

BOAT TESTS

Rinker Fiesta Vee 360

By Capt. Bill Pike



TEST BOAT SPECIFICATIONS

Test Engine: 2/375-hp MerCruiser 496 Mag gasoline stern drives

Boat Tests

SPECIFICATIONS

Builder: Rinker

Model: Fiesta Vee 360

Model Year: 2005

Boat Type: Cruiser

LOA: 39'4"

Beam: 12'3"

Draft: 3'0"

Weight: 18,200 lbs.

Standard Power: 2/320-hp MerCruiser MX 6.2 MPI
Bravo Three or 2/320-hp Volvo Penta 5.7 GXi
DuoProp gasoline stern drives

Optional Power: gasoline and diesel stern-drive
packages to 375 hp per engine

Fuel Capacity: 235 gal.

Water Capacity: 51 gal.

STANDARD EQUIPMENT

Lewmar electric windlass
ITT Jabsco searchlight
Faria instrumentation
Danforth compass
Standard Horizon Eclipse+ VHF
Sony CDXCA 705 AM/FM stereo/CD player w/ 920-watt amplifier, 6/coaxial speakers,
subwoofer, and 2/RM-XM10 remotes
15" Sharp flat-panel TV
Kenyon two-burner cooktop
Tundra refrigerator
Emerson microwave oven
U-Line cockpit ice maker
Omnova Nautotex vinyl upholstery w/ Prefixx protective finish
Aquatik transom shower
Lenco electric trim tabs w/indicators

Subscribe to our **FREE** e-newsletter!

POWER
& MOTORYACHT

Stay up to date on all of our
latest blogs and articles.

RHUMBLINE

[Click here to subscribe ►](#)

BOATS

BOAT TESTS

Rinker Fiesta Vee 360

By Capt. Bill Pike



Boat Tests

SPECIFICATIONS

Builder: Rinker

LOA: 39'4"

Model: Fiesta Vee 360

Beam: 12'3"

Model Year: 2005

Draft: 3'0"

Boat Type: Cruiser

Weight: 18,200 lbs.

Standard Power: 2/320-hp MerCruiser MX 6.2 MPI
Bravo Three or 2/320-hp Volvo Penta 5.7 GXi
DuoProp gasoline stern drives

Optional Power: gasoline and diesel stern-drive
packages to 375 hp per engine

Fuel Capacity: 235 gal.

Water Capacity: 51 gal.

STANDARD EQUIPMENT

Lewmar electric windlass
ITT Jabsco searchlight
Faria instrumentation
Danforth compass
Standard Horizon Eclipse+ VHF
Sony CDXCA 705 AM/FM stereo/CD player w/ 920-watt amplifier, 6/coaxial speakers, subwoofer, and 2/RM-XM10 remotes
15" Sharp flat-panel TV
Kenyon two-burner cooktop
Tundra refrigerator
Emerson microwave oven
U-Line cockpit ice maker
Omnova Nautotex vinyl upholstery w/ Prefixx protective finish
Aquatik transom shower
Lenco electric trim tabs w/indicators
5-kW Kohler genset
40-amp Intelipower PD2040 converter/charger
6-gal. Atwood water heater
18,000-Btu Marine Air A/C
Flojet water pump
Fireboy-Xintex auto. fire-extinguishing system

OPTIONAL EQUIPMENT

forepeak sunpad
concealed cockpit
outboard stowage
cockpit cover
Volvo Penta Seakey Telematic system

This article originally appeared in the May 2005 issue of *Power & Motoryacht* magazine.

Win a wedding of a lifetime

One lucky couple will win the ultimate island wedding at the breathtaking Abaco Beach Resort in the Bahamas. For official rules of entry, please email weddingofalifetime@aimmedia.com

AIM MARINE GROUP YACHTS BoatQuest.com PassageMaker SOUNDINGS Trade Only AIL Anglers Journal POWER



Abaco Beach Resort
ABACO BEACH RESORT & MARINA
EST. 1984



BoatQuest.com

PassageMaker

POWER
MOTORBOAT

AIL

SHOW
MANAGEMENT

SOUNDINGS

Trade Only

YACHTS
RECREATION

Subscribe to our **FREE** e-newsletter!

POWER
& MOTOR YACHT

Stay up to date on all of our latest blogs and articles.

RHUMBLINE

[Click here to subscribe](#) ➤

BOATS

BOAT TESTS

Hampton 540 Sedan

By George L. Petrie



Boat Tests

SPECIFICATIONS

Builder: Hampton

LOA: 58'5"

Model: 540 Sedan

Beam: 16'4"

Model Year: 2005

Draft: 4'0"



Boat Tests

SPECIFICATIONS

Builder: Hampton

Model: 540 Sedan

Model Year: 2005

Boat Type: Cruiser

LOA: 58'5"

Beam: 16'4"

Draft: 4'0"

Weight: 54,000 lbs.

Standard Power: 2/540-hp Cummins QSM-11 diesel engines

Optional Power: 2/660-hp Cummins QSM-11 diesel engines

Fuel Capacity: 800 gal.

Water Capacity: 250 gal.

STANDARD EQUIPMENT

15-kW Kohler genset w/ hushbox

92,000-Btu Cruisair reverse-cycle chilled-water A/C

Wesmar RS 400 stabilizer system

10.7-hp Sidepower bow thruster

Raymarine C120 GPS chartplotter, C80 sounder, radar, and autopilot

Bose surround sound system

32-inch LCD HDTV in saloon

Subscribe to our **FREE** e-newsletter!

POWER
& MOTOR YACHT

Stay up to date on all of our latest blogs and articles.

RHUMBLINE

[Click here to subscribe](#) ➤

BOATS

BOAT TESTS

Hampton 540 Sedan

By George L. Petrie



TEST BOAT SPECIFICATIONS

Test Engine: 2/660-hp Cummins QSM-11 diesel engines

Transmission/Ratio: Twin Disc/2.50:1

Props: Faster 36x35 5-blade Nibral

Steering: Teleflex Sea Star hydraulic



TEST BOAT SPECIFICATIONS

Test Engine: 2/660-hp Cummins QSM-11 diesel engines

Transmission/Ratio: Twin Disc/2.50:1

Props: Faster 36x35 5-blade Nibral

Steering: Teleflex Sea Star hydraulic

Price as Tested: \$989,600

OPTIONAL EQUIPMENT ON TEST BOAT

Cummins C-cruise electronic controls
8-kW Kohler back-up genset w/ hushbox

This article originally appeared in the May 2005 issue of *Power & Motoryacht* magazine.



Subscribe to our **FREE e-newsletter!**

POWER
& MOTORYACHT

Stay up to date on all of our
latest blogs and articles.

RHUMBLINE

[Click here to subscribe](#) ➤

BOATS

BOAT TESTS

Sunseeker Predator 108

By [Capt. Bill Pike](#)



Boat Tests

SPECIFICATIONS

Builder: Sunseeker

LOA: 108'0"

Model: Predator 108

Beam: 20'8"

Model Year: 2005

Draft: 6'0"

Boat Type: Megayacht (> 80')

Weight: 167,600 lbs.

Standard Power: 2/2,000-hp MTU 16V 2000 diesel inboards

Optional Power: 3/2,000-hp MTU 16V 2000 diesel inboards

Fuel Capacity: 2,906 gal.

Water Capacity: 476 gal.

STANDARD EQUIPMENT

teak decks
2/Muir 4500 anchor windlasses
2/Muir stern warping capstans
50-hp Wesmar Vortex bow and stern thruster
Ritchie compass
VDO instrumentation
Furuno NavNet radar/plotter/GPS w/ Nobeltec cartography and 6'open-array scanner
3/NEC screens (w/ trackballs) and Versapoint RF keyboard
Simrad AP20 autopilot, ISI5 wind indicator
ISI5 depth indicators
Icom IC-M602 VHF
42" Panasonic retractable LCD TV
cockpit wet bar w/ Raritan ice maker, Gaggenau grill, cooler, and sink
6/Tecma electric MSDs
2/40-kW Kohler gensets
216,000-Btu Marine Air chilled-water A/C system
3/Phase 3 PT-24-95F Smart Chargers
Sea-Fire auto. FM 200 fire-extinguishing system
HMI Marine (exhaust) silencers

OPTIONAL EQUIPMENT

Servowatch vessel-monitoring system
Inmarsat Fleet 55 global communications system
G8 KVH sat TV TracVision satellite TV
Linn entertainment systems
2/polished s/s anchors
underwater lighting
Zodiac jet-powered tender

This article originally appeared in the May 2005 issue of *Power & Motoryacht* magazine.

Subscribe to our **FREE e-newsletter!**

POWER
& MOTORYACHT

Stay up to date on all of our
latest blogs and articles.

RHUMBLINE

[Click here to subscribe](#) ➤

BOATS

BOAT TESTS

Sunseeker Predator 108

By [Capt. Bill Pike](#)



TEST BOAT SPECIFICATIONS

Test Engine: 3/2,000-hp MTU 16V 2000 diesel inboards

Transmission/Ratio: ZF 2555 A/2.5:1

Props: 44x58 6-blade #16 Arneson Surface Drive (outboard engines) and 43x58 6-blade #16 Arneson Surface Drive (centerline engine)

Steering: Hypo Marine hydraulic

Price as Tested: not available

OPTIONAL EQUIPMENT ON TEST BOAT

Servowatch vessel-monitoring system
Inmarsat Fleet 55 global communications system
G8 KVH sat TV TracVision satellite TV
Linn entertainment systems
2/polished s/s anchors
underwater lighting
Zodiac jet-powered tender

This article originally appeared in the May 2005 issue of *Power & Motoryacht* magazine.

Win a wedding of a lifetime

One lucky couple will win the ultimate island wedding at the breathtaking Abaco Beach Resort in the Bahamas. For official rules of entry, please email weddingofalifetime@aimmedia.com

AIM MARINE GROUP YACHTS BoatQuest.com PassageMaker SOUNDINGS Trade Only AL Anglers Journal POWER



Subscribe to our **FREE** e-newsletter!

POWER
& MOTORYACHT

Stay up to date on all of our latest blogs and articles.

RHUMBLINE

Click here to subscribe ➤

BOATS

BOAT TESTS

Jarrett Bay 32

By [Capt. Patrick Sciacca](#)



Boat Tests

SPECIFICATIONS

Builder: Jarrett Bay

Model: 32

Model Year: 2005

Boat Type: Sportfisherman

LOA: 3'0"

Beam: 11'2"

Draft: 2'0"

Weight: 8,500 lbs.

Standard Power: 2/275-hp Mercury Verado four-stroke gasoline outboards

Optional Power: various twin and triple gasoline outboards up to a max of 825 hp



Subscribe to our **FREE e-newsletter!**



Stay up to date on all of our latest blogs and articles.

RHUMBLINE

[Click here to subscribe](#) ➤

BOATS

BOAT TESTS

Jarrett Bay 32

By [Capt. Patrick Sciacca](#)



TEST BOAT SPECIFICATIONS

Test Engine: 2/275-hp Mercury Verado four-stroke gasoline outboards

Transmission/Ratio: 1.78:1

Props: 14.5x21 3-blade s/s

Steering: Mercury hydraulic w/power-assist



Subscribe to our **FREE e-newsletter!**

POWER
& MOTORYACHT

Stay up to date on all of our latest blogs and articles.

RHUMBLINE

[Click here to subscribe](#) ➤

BOATS

BOAT TESTS

Sculley 64

By [Capt. Richard Thiel](#)



Boat Tests

SPECIFICATIONS

Builder: Sculley Boatbuilders

LOA: 64'0"

Model:

Beam: 18'9"

Model Year: 2005

Draft: 5'6"

Boat Type: Sportfisherman

Weight: 72,000 lbs.

Standard Power: 2/1,652-hp Caterpillar C32 diesel inboards

Optional Power: 2/1,800-hp Caterpillar C-32A or 2,000-hp MTU 16V 2000 diesel inboards



Subscribe to our **FREE e-newsletter!**

POWER
& MOTORYACHT

Stay up to date on all of our
latest blogs and articles.

RHUMBLINE

Click here to subscribe ➤

BOATS

BOAT TESTS

Sculley 64

By [Capt. Richard Thiel](#)



TEST BOAT SPECIFICATIONS

Test Engine: 2/1,550-hp Caterpillar C30 diesel inboards

Transmission/Ratio: ZF/1.75:1

Props: 32x35 5-blade Teinbridge

Steering: Hynautic hydraulic, power-assisted



Subscribe to our **FREE** e-newsletter!



Stay up to date on all of our latest blogs and articles.

RHUMBLINE

[Click here to subscribe](#) ➤

BOATS

BOAT TESTS

Sea Ray 48 Sundancer

By [Capt. Richard Thiel](#)



Boat Tests

SPECIFICATIONS

Builder: Sea Ray

LOA: 51'0"

Model: 48 Sundancer

Beam: 14'8"

Model Year: 2005

Draft: 4'0"

Boat Type: Cruiser

Weight: 33,600 lbs.

Standard Power: 2/446-shp Cummins QSC 8.3-490 diesel V-drive inboards

Optional Power: 2/517-shp Cummins QSC 8.3-540 diesel V-drive inboards

Fuel Capacity: 400 gal.



Subscribe to our **FREE e-newsletter!**

POWER
& MOTORYACHT

Stay up to date on all of our latest blogs and articles.

RHUMBLINE

[Click here to subscribe](#) ➤

BOATS

BOAT TESTS

Sea Ray 48 Sundancer

By [Capt. Richard Thiel](#)



TEST BOAT SPECIFICATIONS

Test Engine: 2/517-shp Cummins QSC 8.3-540 diesel inboards

Transmission/Ratio: ZF V-drives/1.73:1

Props: 24x30 4-blade nibrals

Steering: Hynautic hydraulic



Subscribe to our **FREE** e-newsletter!

POWER
& MOTORYACHT

Stay up to date on all of our
latest blogs and articles.

RHUMBLINE

[Click here to subscribe](#) ➤

BOATS

BOAT TESTS

Horizon 78

By [Capt. Bill Pike](#)



Boat Tests

SPECIFICATIONS

Builder: Horizon

LOA: 78'0"

Model: 78

Beam: 19'0"

Model Year: 2005

Draft: 6'0"

Boat Type: Cruiser

Weight: 140,000 lbs.

Standard Power: 2/1,400-hp 3412E Caterpillar
inboard diesels

Optional Power: twin diesel inboards from Caterpillar,
MAN, and MTU up to 1,800 hp apiece

Fuel Capacity: 1,950 gal.

Water Capacity: 400 gal.



Subscribe to our **FREE e-newsletter!**

POWER
& MOTORYACHT

Stay up to date on all of our
latest blogs and articles.

RHUMBLINE

Click here to subscribe ➤

BOATS

BOAT TESTS

Horizon 78

By [Capt. Bill Pike](#)



TEST BOAT SPECIFICATIONS

Test Engine: 2/1,500-hp MAN D2842LE409 diesel inboards

Transmission/Ratio: ZF 2050A/2.5:1

Props: 40x43 4-blade nibral Fast

Steering: Hynautic hydraulic w/engine-driven power-assist

Price as Tested: \$3,150,000



Subscribe to our **FREE** e-newsletter!

POWER
& MOTORYACHT

Stay up to date on all of our latest blogs and articles.

RHUMBLINE

Click here to subscribe ➤

BOATS

BOAT TESTS

Pershing 115

By [Alan Harper](#)



Boat Tests

SPECIFICATIONS

Builder: Pershing

Model: 115

Model Year: 2005

Boat Type: Megayacht (> 80')

LOA: 115'1"

Beam: 23'7"

Draft: 4'5"

Weight: 251,327 lbs.

Standard Power: 2/3,700-hp MTU 16V 4000 diesel inboards w/KaMeWa 71 SII waterjets

Optional Power: 1/5,600-hp DDC-MTU TF50 gas turbine w/KaMeWa waterjet (paired with standard engines); 2/3,700-hp MTU 16V4000 diesel inboards plus 1/TF50 gas turbine w/KaMeWa waterjet



Subscribe to our **FREE e-newsletter!**

POWER
& MOTORYACHT

Stay up to date on all of our
latest blogs and articles.

RHUMBLINE

Click here to subscribe ➤

BOATS

BOAT TESTS

Pershing 115

By [Alan Harper](#)



TEST BOAT SPECIFICATIONS

Test Engine: 2/3,700-hp MTU 16V 4000 M09 diesel inboards

Transmission/Ratio: ZF 7550/2.24:1

Props: N/A

Steering: KaMeWa hydraulic



Subscribe to our **FREE** e-newsletter!

POWER
& MOTOR YACHT

Stay up to date on all of our latest blogs and articles.

RHUMBLINE

[Click here to subscribe](#) ➤

BOATS

BOAT TESTS

Pursuit 3480

By [Chris Casey](#)



Boat Tests

SPECIFICATIONS

Builder: Pursuit

LOA: 34'5"

Model: 3480

Beam: 9'6"

Model Year: 2005

Draft: 1'10"

Boat Tests

SPECIFICATIONS

Builder: Pursuit

Model: 3480

Model Year: 2005

Boat Type: Sportfisherman

LOA: 34'5"

Beam: 9'6"

Draft: 1'10"

Weight: 9,200 lbs.

Standard Power: 2/225-hp Yamaha F225 four-stroke gasoline outboards

Optional Power: 2/250-hp Yamaha F250 four-stroke or 2/300-hp Yamaha V6 HPDI two-stroke gasoline outboards

Fuel Capacity: 375 gal.

Water Capacity: 30 gal.

STANDARD EQUIPMENT

2/Garelick adjustable helm seats w/bolsters
4/rocket launchers
6/rod holders
Edson wheel w/knob
tilt wheel
K-plane trim tabs w/indicator
downrigger reinforcement plates
Clarion AM/FM stereo/CD player
Carling rocker switches
Yamaha fuel-management system
3/Yamaha 2" analog fuel gauges
Racor fuel-water separators
2/bilge pumps
4/Quad battery switches

OPTIONAL EQUIPMENT

High Seas hardtop w/ E-Tech outriggers, 2/Hobbs cockpit spreader lights, and 6/rocket launchers
Cannon downriggers
Clarion 6-CD changer
Sirius satellite radio
2/C-120 Raymarine multifunction navigation color displays

Subscribe to our **FREE** e-newsletter!

POWER
& MOTOR YACHT

Stay up to date on all of our latest blogs and articles.

RHUMBLINE

[Click here to subscribe](#) ➤

BOATS

BOAT TESTS

Pursuit 3480

By [Chris Casey](#)



TEST BOAT SPECIFICATIONS

Test Engine: 2/300-hp Yamaha V6 HPDI four-stroke gasoline outboards

Transmission/Ratio: 1.75:1

Props: 151/2 x 19 3-blade s/s Yamaha Saltwater Series

Steering: Teleflex SeaStar hydraulic



TEST BOAT SPECIFICATIONS

Test Engine: 2/300-hp Yamaha V6 HPDI four-stroke gasoline outboards

Transmission/Ratio: 1.75:1

Props: 15 1/2 x 19 3-blade s/s Yamaha Saltwater Series

Steering: Teleflex SeaStar hydraulic

Price as Tested: \$189,098

OPTIONAL EQUIPMENT ON TEST BOAT

High Seas hardtop w/ E-Tech outriggers, 2/Hobbs cockpit spreader lights, and 6/rocket launchers

Cannon downriggers

Clarion 6-CD changer

Sirius satellite radio

2/C-120 Raymarine multifunction navigation color displays

Raymarine Ray 54 VHF

VacuFlush MSD w/macerator and 10-gal. holding tank

32-gal. livewell

removable insulated coffin box

This article originally appeared in the April 2005 issue of *Power & Motoryacht* magazine.



Subscribe to our **FREE** e-newsletter!



Stay up to date on all of our latest blogs and articles.

RHUMBLINE

[Click here to subscribe](#) ➤

BOATS

BOAT TESTS

Formula 48

By [Capt. Bill Pike](#)



Boat Tests

SPECIFICATIONS

Builder: Formula

LOA: 48'0"

Model: 48

Beam: 14'0"

Model Year: 2005

Draft: 3'8"

Boat Type: Cruiser

Weight: 35,750 lbs.

Standard Power: 2/660-hp Cummins QSM11 diesel inboards

Optional Power: none



Subscribe to our **FREE e-newsletter!**

POWER
& MOTORYACHT

Stay up to date on all of our
latest blogs and articles.

RHUMBLINE

[Click here to subscribe](#) ➤

BOATS

BOAT TESTS

Formula 48

By [Capt. Bill Pike](#)



TEST BOAT SPECIFICATIONS

Test Engine: 2/660-hp Cummins QSM11 diesel inboards

Transmission/Ratio: ZF 325 IV/1.76:1

Props: 26x39 1/4 4-blade ZF nibrals

Steering: Teleflex Sea-Star II hydraulic w/power assist



Subscribe to our **FREE e-newsletter!**

POWER
& MOTORYACHT

Stay up to date on all of our
latest blogs and articles.

RHUMBLINE

Click here to subscribe ➤

BOATS

BOAT TESTS

Aicon 64

By [Capt. Patrick Sciacca](#)



TEST BOAT SPECIFICATIONS

Test Engine: 2/1,350-hp MAN D2842 LE404 diesel inboards

Transmission/Ratio: ZF/1.219:1

Props: 37x51 4-blade Radice nibral

Steering: BCS hydraulic



Subscribe to our **FREE e-newsletter!**



Stay up to date on all of our latest blogs and articles.

RHUMBLINE

[Click here to subscribe](#) ➤

BOATS

BOAT TESTS

Aicon 64

By [Capt. Patrick Sciacca](#)



Boat Tests

SPECIFICATIONS

Builder: Aicon

LOA: 69'3"

Model: 64

Beam: 17'4"

Model Year: 2005

Draft: 4'11"

Boat Type: Cruiser

Weight: 79,500 lbs.

Standard Power: 2/1,350-hp MAN D2842 LE404 diesel inboards

Optional Power: none

Fuel Capacity: 965 gal.

Water Capacity: 260 gal.

STANDARD EQUIPMENT

high-gloss cherry or art deco interior
leather helm seat
Alcantara lounge in saloon
central vacuum
teak swim platform
30" flat-panel TV w/Bose Lifestyle 28 Surround Sound system
15" flat-panel TV w/Bose 321 system and DVD in master stateroom
Reverso oil-change system
raised radar mount
13.5-hp Sidepower bow thruster

OPTIONAL EQUIPMENT

75,000-Btu Condaria chilled-water A/C
barbecue grill, U-line ice maker, and Vitrofrigo fridge on flying bridge
bimini top
crew quarters including outfitting, head, and A/C
VIP and guest staterooms
Bosch washer/dryer
Raymarine electronics package with 631 chartplotter, ST8001 autopilot, RL70C radar, RL80CRC, 530 plotter, 2/240 VHF's, ST290 Tridata, 120 WAAS GPS

This article originally appeared in the April 2005 issue of *Power & Motoryacht* magazine.



Subscribe to our **FREE e-newsletter!**



Stay up to date on all of our latest blogs and articles.

RHUMBLINE

[Click here to subscribe ►](#)

BOATS

BOAT TESTS

Carver 33 Super Sport

By Capt. Richard Thiel



Boat Tests

SPECIFICATIONS

Builder: Carver

LOA: 38'8"

Model: 33 Super Sport

Beam: 13'1"

Model Year: 2005

Draft: 3'1"

Boat Type: Cruiser

Weight: 18,400 lbs.

Standard Power: 2/330-hp Crusader 5.7 HO MPI gasoline inboards

Optional Power: 2/375-hp Crusader 6.0 HO MPI or 2/385-hp Crusader 8.1 MPI gasoline inboards

Fuel Capacity: 311 gal.

Water Capacity: 78 gal.

STANDARD EQUIPMENT

18,000-Btu A/C

7.3-kW Kohler genset

Maxwell Freedom 800 windlass w/ anchor and chain spotlight

20" TV w/DVD player

AM/FM/stereo with satellite radio and single CD player





Subscribe to our **FREE e-newsletter!**



Stay up to date on all of our latest blogs and articles.

RHUMBLINE

[Click here to subscribe](#) ➤

BOATS

BOAT TESTS

Carver 33 Super Sport

By [Capt. Richard Thiel](#)



TEST BOAT SPECIFICATIONS

Test Engine: 2/375-hp Crusader 6.0 HO MPI gasoline inboards

Transmission/Ratio: ZF/2.70:1

Props: 22x22 4-blade nibral

Steering: Sea Star hydraulic

Price as Tested: \$275,975

